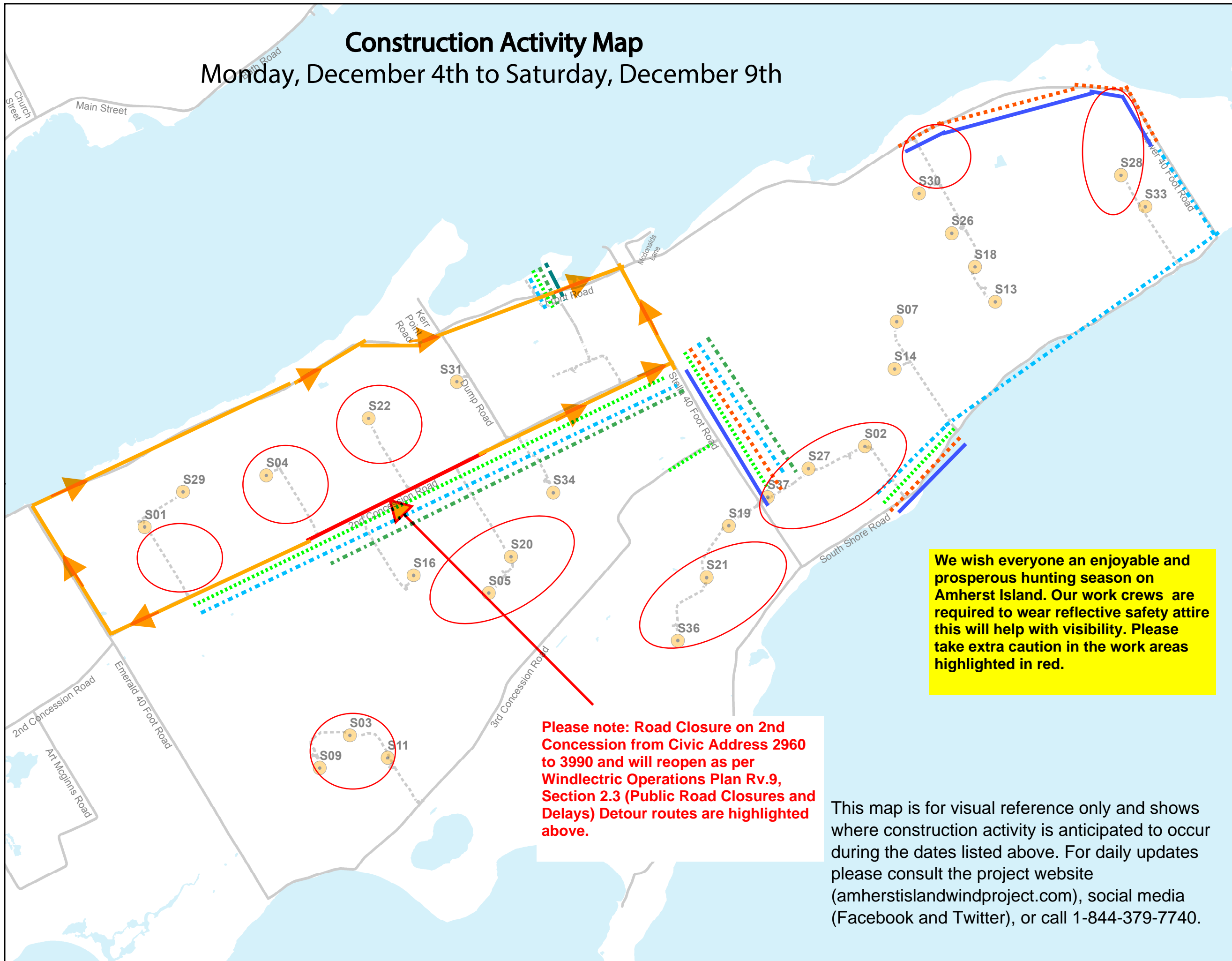


Construction Activity Map

Monday, December 4th to Saturday, December 9th

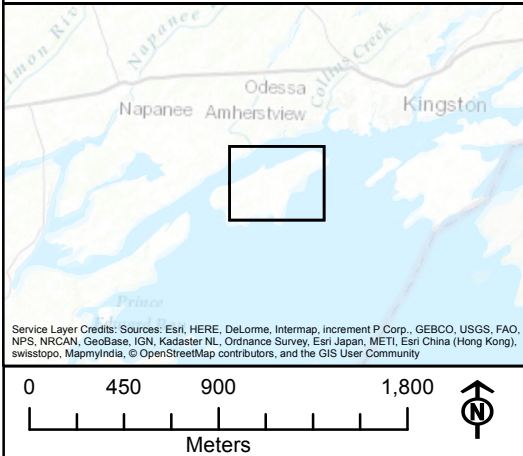



We wish everyone an enjoyable and prosperous hunting season on Amherst Island. Our work crews are required to wear reflective safety attire this will help with visibility. Please take extra caution in the work areas highlighted in red.

Please note: Road Closure on 2nd Concession from Civic Address 2960 to 3990 and will reopen as per Windlectric Operations Plan Rv.9, Section 2.3 (Public Road Closures and Delays) Detour routes are highlighted above.

This map is for visual reference only and shows where construction activity is anticipated to occur during the dates listed above. For daily updates please consult the project website (amherstislandwindproject.com), social media (Facebook and Twitter), or call 1-844-379-7740.

- ### Legend
- Turbine Locations
 - Existing Public Road
 - Project Access Road
 - Waterbodies
- ### Construction Activity
- Trenching
 - Aggregate Delivery
 - Concrete Delivery
 - Component Delivery
 - Area of Potential Traffic Interruption
 - Single Lane Restrictions
 - Road Closures
 - Detours





AMHERST ISLAND WIND PROJECT

TITLE:

Weekly Construction Activity Map

DATUM/PROJECTION: NAD83/UTM ZONE 18N SCALE: 1:36,000

DRAWING No. **AMHST - 287**