

Copyright Reserved

The Contractor shall verify and be responsible for all dimensions. DO NOT scale the drawing - any errors or omissions shall be reported to Stantec without delay.
The Copyrights to all designs and drawings are the property of Stantec. Reproduction or use for any purpose other than that authorized by Stantec is forbidden.

Notes

- 1/12 CN ACCEPTABLE FOR 1250 kcmil CABLE.
- CABLE LENGTHS SHOWN ARE POINT TO POINT MEASUREMENTS +5% FOR RUNS <1000m & +3% FOR RUNS >1000m.
- REFER TO SHEET 4 FOR CABLE SCHEDULE. SIZES ARE NOT FINAL AND SUBJECT TO CHANGE.

Legend

- WTG (WIND TURBINE GENERATOR)
- WTG UNIT SUBSTATION
- 35kV 200kV BIL SECTIONALIZING JUNCTION BOX C/W DEADBREAK JUNCTION BAR (No. OF CONNECTIONS AS SHOWN IN DRAWING)
- CABLE TERMINATION
- DEADBREAK ELBOW
- SA
- 35kV UNDERGROUND COLLECTOR CABLE
- FAULT INDICATOR LOCATED BELOW THE BASE OF ELBOW

Revision	By	Appd.	YY.MM.DD	
B	ISSUED FOR MUNICIPAL CONSENT	BM	AR	17.02.03
A	ISSUED FOR MUNICIPAL CONSENT	JM	JR	17.01.19

File Name	Dim.	Chkd.	Dgn.	YY.MM.DD
dwg_60104_AWF_E400.dwg	BM	JR	SF/JM	15.12.07

Permit-Seal

ISSUED FOR PERMITTING

Client/Project



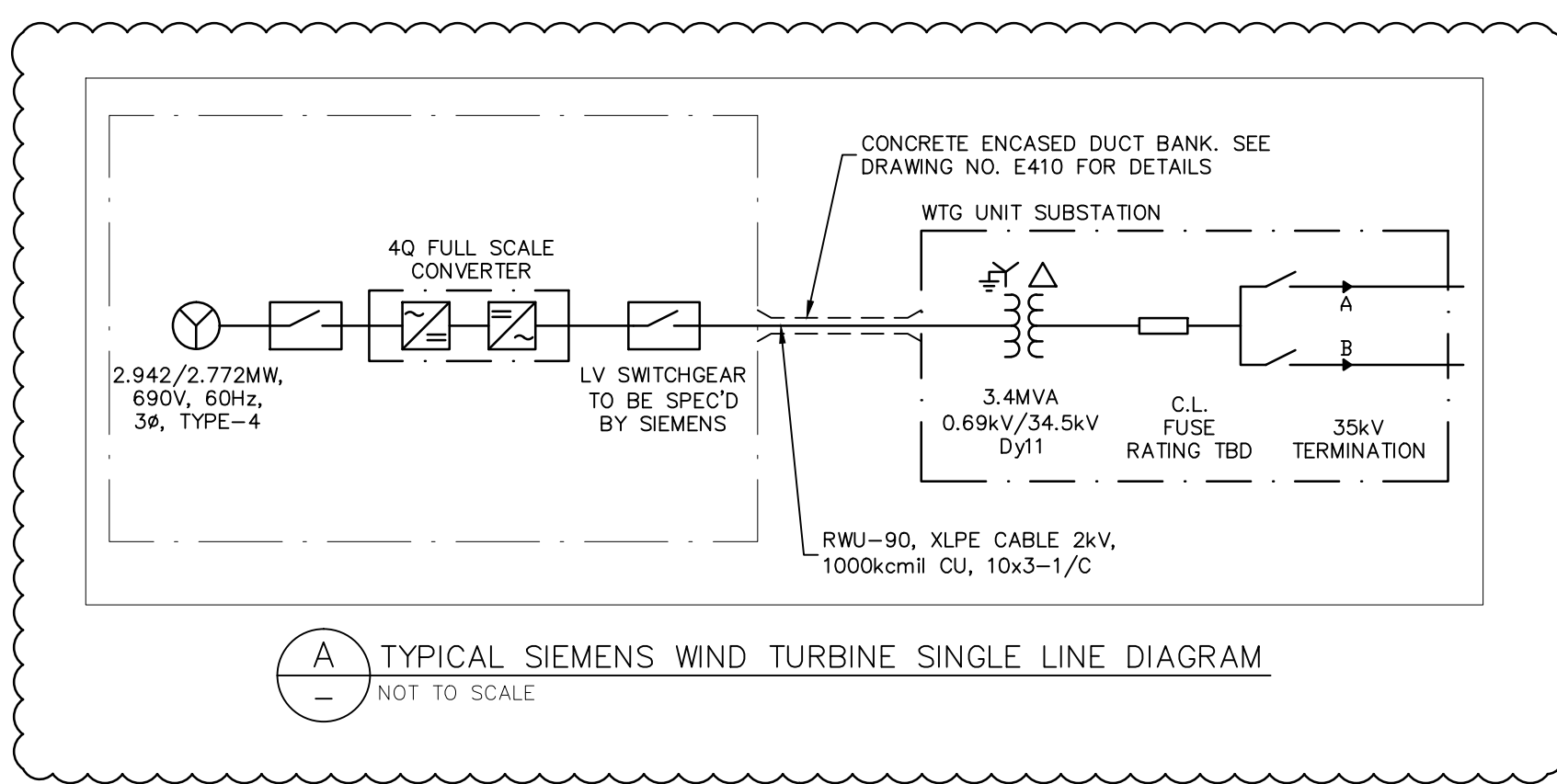
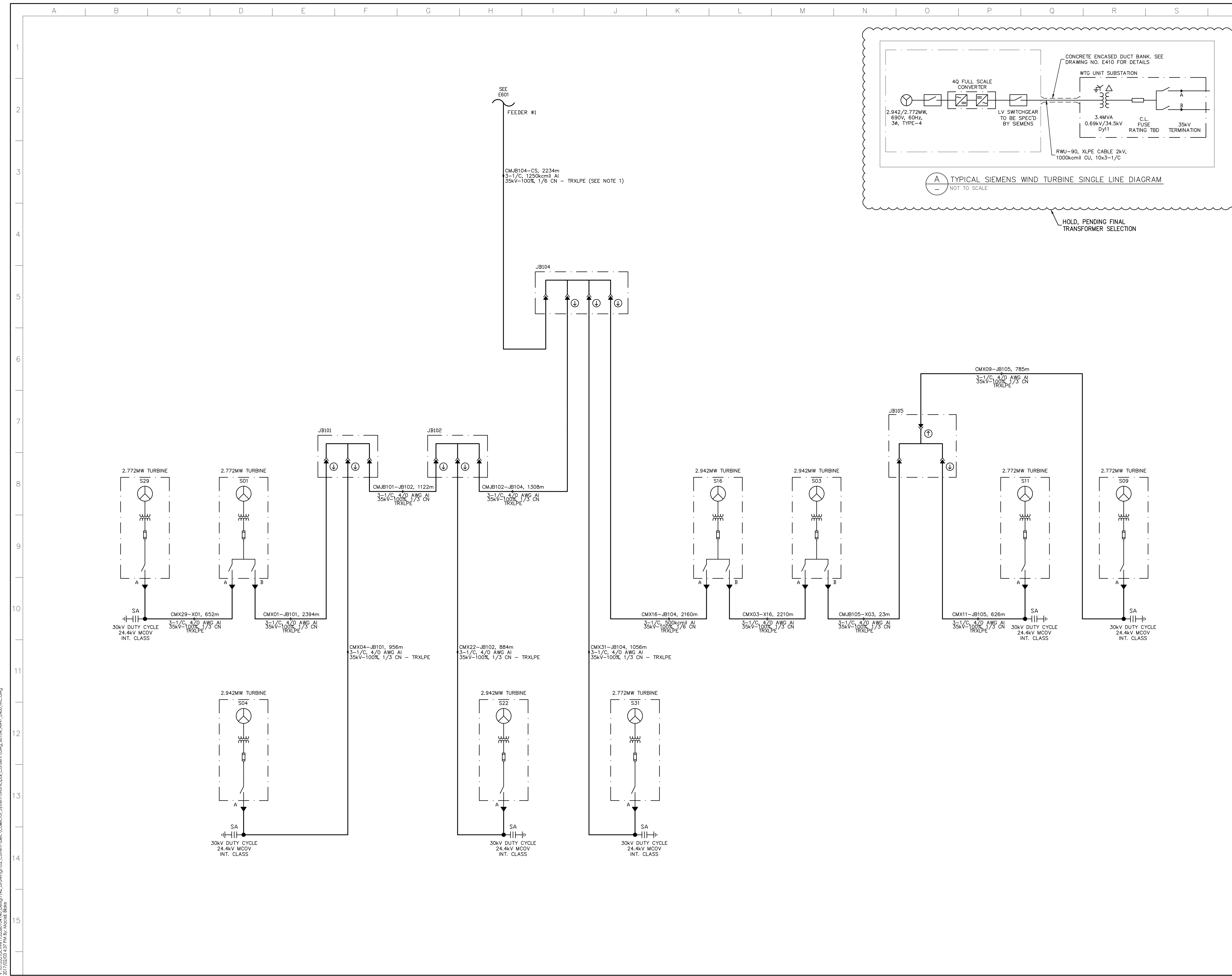
AMHERST ISLAND WIND PROJECT
75MW WIND FARM
Amherst Island, Loyalist Township, Ontario

Title

34.5kV COLLECTOR SYSTEM
FEEDER SINGLE LINE DIAGRAM
FEEDER #1

Project No.	Scale	
133560104	NOT TO SCALE	
Drawing No.	Sheet	Revision

E400A 1 of 4 B



(A) TYPICAL SIEMENS WIND TURBINE SINGLE LINE DIAGRAM
NOT TO SCALE

HOLD, PENDING FINAL TRANSFORMER SELECTION

V:\01355\active\133560104_40_Design\42_Drawing\02_Current\Bacs_Collector_System\Municipal_Content\dwg_60104_AWF_E400_AJC.dwg
2017/02/03 4:57 PM By: Michael Blake

Copyright Reserved

The Contractor shall verify and be responsible for all dimensions, DO NOT scale the drawing - any errors or omissions shall be reported to Stantec without delay.
The Copyrights to all designs and drawings are the property of Stantec. Reproduction or use for any purpose other than that authorized by Stantec is forbidden.

Notes

- 1/12 ON ACCEPTABLE FOR 1250 kcmil CABLE.
- CABLE LENGTHS SHOWN ARE POINT TO POINT MEASUREMENTS +5% FOR RUNS <1000m & +3% FOR RUNS >1000m.
- REFER TO SHEET 4 FOR CABLE SCHEDULE. SIZES ARE NOT FINAL AND SUBJECT TO CHANGE.

Legend

- WTG (WIND TURBINE GENERATOR)
- WTG UNIT SUBSTATION
- 35kV 200kV BIL SECTIONALIZING JUNCTION BOX C/W DEADBREAK JUNCTION BAR (No. OF CONNECTIONS AS SHOWN IN DRAWING)
- CABLE TERMINATION
- DEADBREAK ELBOW
- SA SURGE ARRESTER
- 35kV UNDERGROUND COLLECTOR CABLE
- FAULT INDICATOR LOCATED BELOW THE BASE OF ELBOW

Revision	By	Appd.	YY.MM.DD
B	JM	AR	17.02.03
A	JM	JR	17.01.19

File Name	Dim.	Chkd.	Dsgn.	YY.MM.DD
dwg_60104_AWF_E400.dwg	BM	JR	SF/JM	15.12.07

Permit Seal

ISSUED FOR PERMITTING

Client/Project



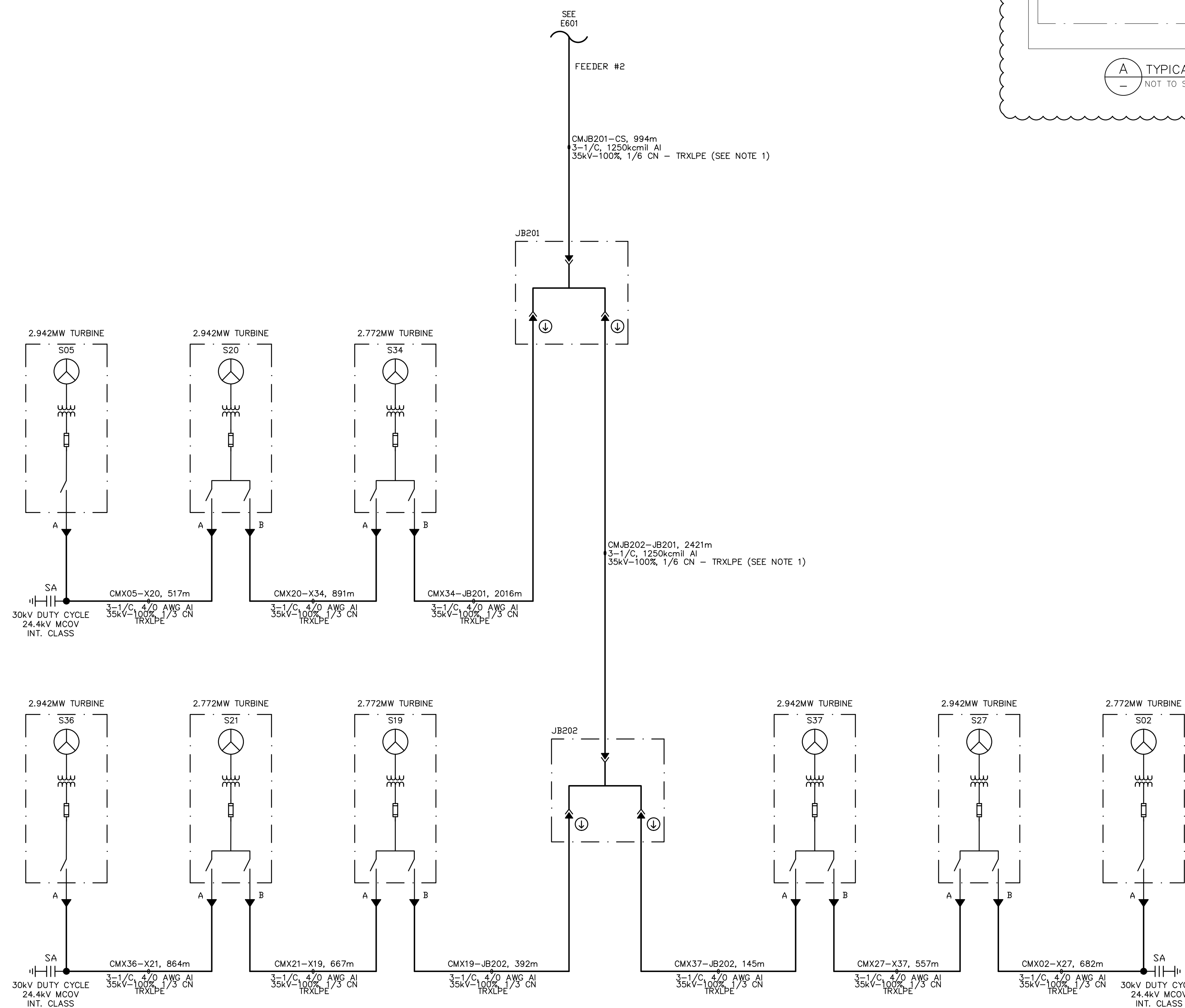
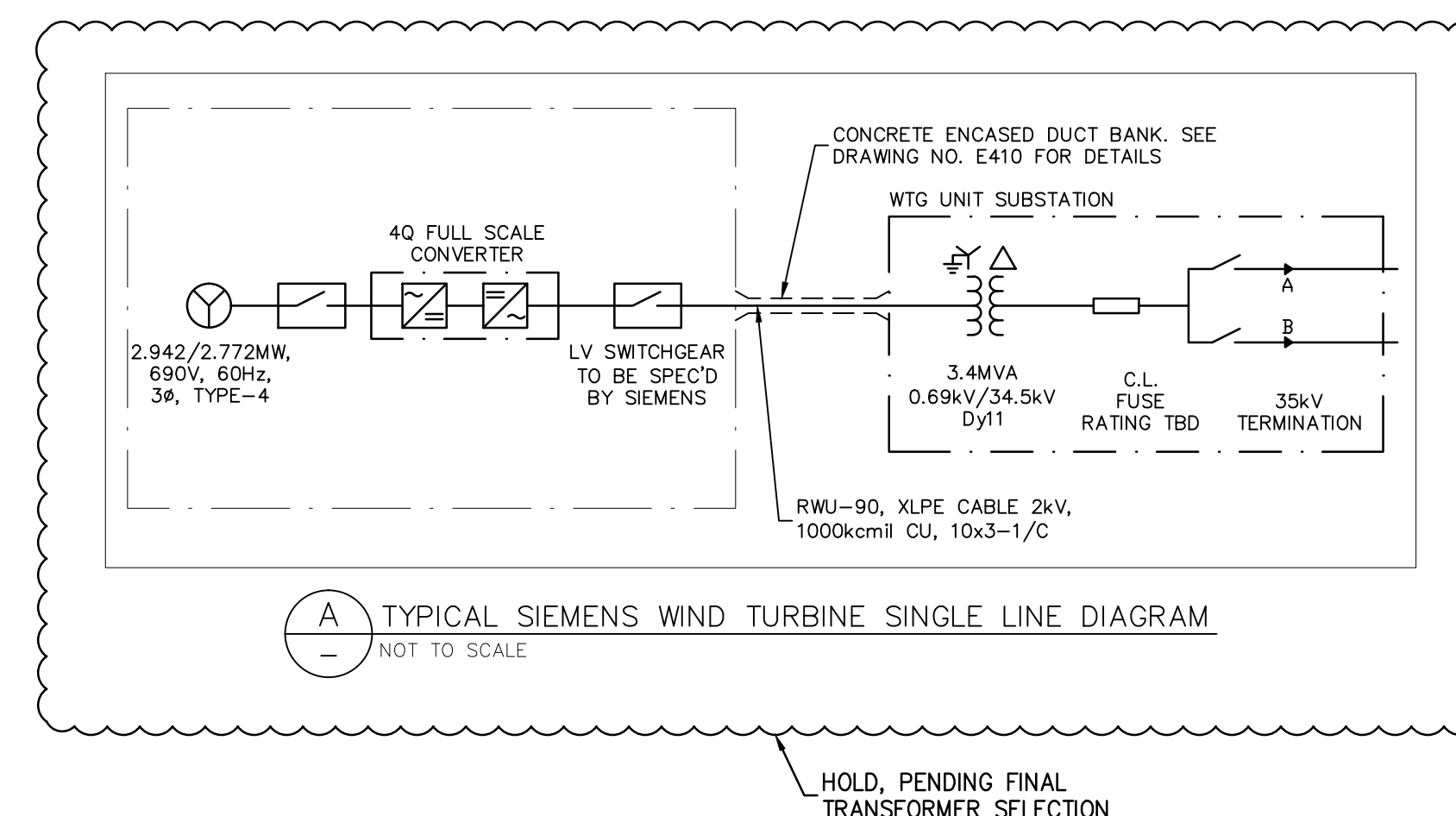
AMHERST ISLAND WIND PROJECT
75MW WIND FARM
Amherst Island, Loyalist Township, Ontario

Title

34.5kV COLLECTOR SYSTEM
FEEDER SINGLE LINE DIAGRAM
FEEDER #2

Project No.	Scale	
133560104	NOT TO SCALE	
Drawing No.	Sheet	Revision

E400A 2 of 4 B



V:\0133560104\04_40_Design\42_Drawing\02_Current\Bacs_Collector_System\Municipal_Conentm\dwg_60104_AWF_E400_AJC.dwg
2017/02/03 4:57 PM By: Michael Blake

Copyright Reserved

The Contractor shall verify and be responsible for all dimensions, DO NOT scale the drawing - any errors or omissions shall be reported to Stantec without delay.
The Copyrights to all designs and drawings are the property of Stantec. Reproduction or use for any purpose other than that authorized by Stantec is forbidden.

Notes

- 1/12 ON ACCEPTABLE FOR 1250 kcmil CABLE.
- CABLE LENGTHS SHOWN ARE POINT TO POINT MEASUREMENTS +5% FOR RUNS <1000m & +3% FOR RUNS >1000m.
- REFER TO SHEET 4 FOR CABLE SCHEDULE. SIZES ARE NOT FINAL AND SUBJECT TO CHANGE.

Legend

- WTG (WIND TURBINE GENERATOR)
- WTG UNIT SUBSTATION
- 35kV 200kV BIL SECTIONALIZING JUNCTION BOX C/W DEADBREAK JUNCTION BAR (No. OF CONNECTIONS AS SHOWN IN DRAWING)
- CABLE TERMINATION
- DEADBREAK ELBOW
- SA SURGE ARRESTER
- 35kV UNDERGROUND COLLECTOR CABLE
- FAULT INDICATOR LOCATED BELOW THE BASE OF ELBOW

Revision	By	Appd.	YY.MM.DD
B	ISSUED FOR MUNICIPAL CONSENT	BM	AR 17.02.03
A	ISSUED FOR MUNICIPAL CONSENT	JM	JR 17.01.19

File Name	Dwg.	Chkd.	Dgn.	YY.MM.DD
dwg_60104_AWF_E400.dwg	BM	JR	SF/JM	15.12.07

Permit Seal

ISSUED FOR PERMITTING

Client/Project



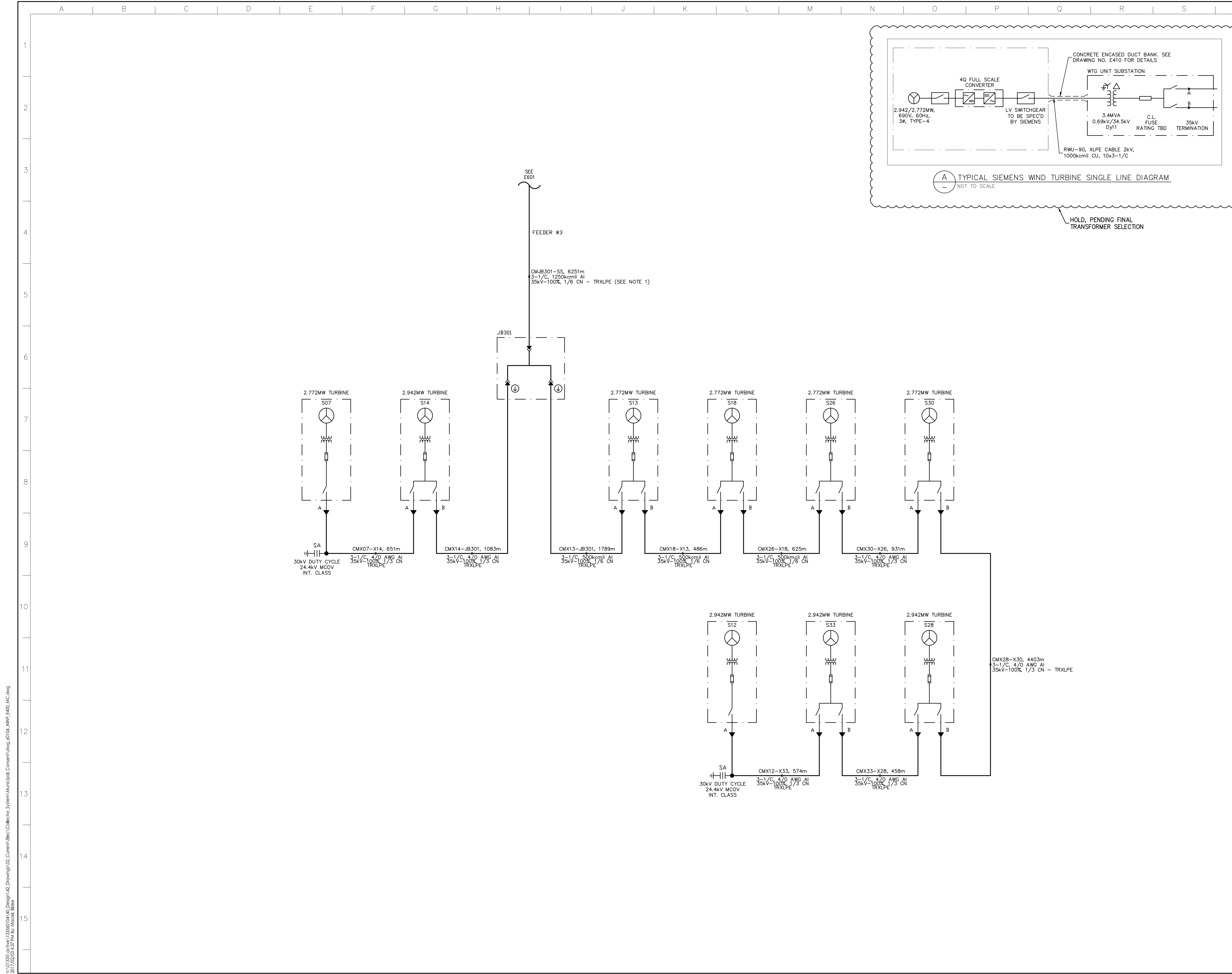
AMHERST ISLAND WIND PROJECT
75MW WIND FARM
Amherst Island, Loyalist Township, Ontario

Title

34.5kV COLLECTOR SYSTEM
FEEDER SINGLE LINE DIAGRAM
FEEDER #3

Project No.	Scale	
133560104	NOT TO SCALE	
Drawing No.	Sheet	Revision

E400A 3 of 4 B



V:\0133560104\04_00_Design\42_Drawing\02_Current\Bacs\Collector_System\Municipal_Conentm\dwg_60104_AWF_E400_AJC.dwg
2017/02/03 4:57 PM By: Michael Blake

Copyright Reserved

The Contractor shall verify and be responsible for all dimensions. DO NOT scale the drawing - any errors or omissions shall be reported to Stantec without delay.
The Copyrights to all designs and drawings are the property of Stantec. Reproduction or use for any purpose other than that authorized by Stantec is forbidden.

Notes

- 1/12 ON ACCEPTABLE FOR 750, 1000, 1250 kcmil CABLE.
- CABLE LENGTHS SHOWN ARE POINT TO POINT MEASUREMENTS +5% FOR RUNS <1000m & +3% FOR RUNS >1000m.
- CABLE SIZES ARE NOT FINAL AND SUBJECT TO CHANGE.

COLLECTOR CIRCUIT POWER CABLE SCHEDULE									
CABLE TAG	SOURCE	DESTINATION	MAXIMUM OPERATING CURRENT @ 0.95PF (A)	CABLE TYPE	CABLE SIZE	C.N. SIZE	SEGMENT LENGTH (NOTE 2) (m)	TOTAL LENGTH (3x Segment Length) (m)	INSTALLATION
GSU	WTG	GSU		10x 3-1/C, XLPE, RWU-90, Cu, 2kV	1000 kcmil	N/A	-	-	CONCRETE ENCASED DUCT
CMX29-X01	S29	S01	49.0	3-1/C TRXLPE, AL, LLDPE, 35kV-100%	4/0 AWG	Size-1/3+ (13x#14)	651.20	1954	Direct Buired, Trefoil
CMX01-JB101	S01	JB101	98.0	3-1/C TRXLPE, AL, LLDPE, 35kV-100%	4/0 AWG	Size-1/3+ (13x#14)	2393.50	7181	Direct Buired, Trefoil
CMX04-JB101	S04	JB101	52.0	3-1/C TRXLPE, AL, LLDPE, 35kV-100%	4/0 AWG	Size-1/3+ (13x#14)	955.90	2868	Direct Buired, Trefoil
CMJB101-JB102	JB101	JB102	149.0	3-1/C TRXLPE, AL, LLDPE, 35kV-100%	4/0 AWG	Size-1/3+ (13x#14)	1121.70	3365	Direct Buired, Trefoil
CMX22-JB102	S22	JB102	52.0	3-1/C TRXLPE, AL, LLDPE, 35kV-100%	4/0 AWG	Size-1/3+ (13x#14)	883.70	2651	Direct Buired, Trefoil
CMJB102-JB104	JB102	JB104	201.0	3-1/C TRXLPE, AL, LLDPE, 35kV-100%	4/0 AWG	Size-1/3+ (13x#14)	1308.00	3924	Direct Buired, Trefoil
CMX31-JB104	S31	JB104	49.0	3-1/C TRXLPE, AL, LLDPE, 35kV-100%	4/0 AWG	Size-1/3+ (13x#14)	1056.00	3168	Direct Buired, Trefoil
CMX09-JB105	S09	JB105	49.0	3-1/C TRXLPE, AL, LLDPE, 35kV-100%	4/0 AWG	Size-1/3+ (13x#14)	784.16	2352	Direct Buired, Trefoil
CMX11-JB105	S11	JB105	49.0	3-1/C TRXLPE, AL, LLDPE, 35kV-100%	4/0 AWG	Size-1/3+ (13x#14)	625.60	1877	Direct Buired, Trefoil
CMJB105-X03	JB105	S03	98.0	3-1/C TRXLPE, AL, LLDPE, 35kV-100%	4/0 AWG	Size-1/3+ (13x#14)	22.15	66	Direct Buired, Trefoil
CMX03-X16	S03	S16	149.0	3-1/C TRXLPE, AL, LLDPE, 35kV-100%	4/0 AWG	Size-1/3+ (13x#14)	2209.73	6629	Direct Buired, Trefoil
CMX16-JB104	S16	JB104	201.0	3-1/C TRXLPE, AL, LLDPE, 35kV-100%	500 kcmil	Size-1/6+ (16x#14)	2159.21	6478	Direct Buired, Trefoil
CMJB104-CS	JB104	CS	451.0	3-1/C TRXLPE, AL, LLDPE, 35kV-100%	1250 kcmil	Size-1/6 (20x#12)	2233.27	6700	Direct Buired, Trefoil
CMX05-X20	S05	S20	52.0	3-1/C TRXLPE, AL, LLDPE, 35kV-100%	4/0 AWG	Size-1/3+ (13x#14)	516.18	1549	Direct Buired, Trefoil
CMX20-X34	S20	S34	104.0	3-1/C TRXLPE, AL, LLDPE, 35kV-100%	4/0 AWG	Size-1/3+ (13x#14)	890.82	2672	Direct Buired, Trefoil
CMX34-JB201	S34	JB201	152.0	3-1/C TRXLPE, AL, LLDPE, 35kV-100%	4/0 AWG	Size-1/3+ (13x#14)	2015.93	6048	Direct Buired, Trefoil
CMX36-X21	S36	S21	52.0	3-1/C TRXLPE, AL, LLDPE, 35kV-100%	4/0 AWG	Size-1/3+ (13x#14)	863.52	2591	Direct Buired, Trefoil
CMX21-X19	S21	S19	101.0	3-1/C TRXLPE, AL, LLDPE, 35kV-100%	4/0 AWG	Size-1/3+ (13x#14)	666.54	2000	Direct Buired, Trefoil
CMX19-JB202	S19	202	149.0	3-1/C TRXLPE, AL, LLDPE, 35kV-100%	4/0 AWG	Size-1/3+ (13x#14)	391.75	1175	Direct Buired, Trefoil
CMX02-X27	S02	S27	49.0	3-1/C TRXLPE, AL, LLDPE, 35kV-100%	4/0 AWG	Size-1/3+ (13x#14)	681.24	2044	Direct Buired, Trefoil
CMX27-X37	S27	S37	101.0	3-1/C TRXLPE, AL, LLDPE, 35kV-100%	4/0 AWG	Size-1/3+ (13x#14)	556.39	1669	Direct Buired, Trefoil
CMX37-JB202	S37	JB202	152.0	3-1/C TRXLPE, AL, LLDPE, 35kV-100%	4/0 AWG	Size-1/3+ (13x#14)	144.27	433	Direct Buired, Trefoil
CMJB202-JB201	JB202	JB201	302.0	3-1/C TRXLPE, AL, LLDPE, 35kV-100%	1250 kcmil	Size-1/6 (20x#12)	2420.52	7262	Direct Buired, Trefoil
CMJB201-CS	JB201	CS	454.0	3-1/C TRXLPE, AL, LLDPE, 35kV-100%	1250 kcmil	Size-1/6 (20x#12)	993.40	2980	Direct Buired, Trefoil
CMX12-X33	S12	S33	52.0	3-1/C TRXLPE, AL, LLDPE, 35kV-100%	4/0 AWG	Size-1/3+ (13x#14)	547.00	1641	Direct Buired, Trefoil
CMX33-X28	S33	S28	104.0	3-1/C TRXLPE, AL, LLDPE, 35kV-100%	4/0 AWG	Size-1/3+ (13x#14)	457.90	1374	Direct Buired, Trefoil
CMX28-X30	S28	S30	156.0	3-1/C TRXLPE, AL, LLDPE, 35kV-100%	4/0 AWG	Size-1/3+ (13x#14)	4402.14	13206	Direct Buired, Trefoil
CMX30-X26	S30	S26	205.0	3-1/C TRXLPE, AL, LLDPE, 35kV-100%	4/0 AWG	Size-1/3+ (13x#14)	930.20	2791	Direct Buired, Trefoil
CMX26-X18	S26	S18	254.0	3-1/C TRXLPE, AL, LLDPE, 35kV-100%	500 kcmil	Size-1/6+ (16x#14)	624.12	1872	Direct Buired, Trefoil
CMX18-X13	S18	S13	302.0	3-1/C TRXLPE, AL, LLDPE, 35kV-100%	500 kcmil	Size-1/6+ (16x#14)	486.04	1458	Direct Buired, Trefoil
CMX13-JB301	S13	JB301	351.0	3-1/C TRXLPE, AL, LLDPE, 35kV-100%	500 kcmil	Size-1/6+ (16x#14)	1788.92	5367	Direct Buired, Trefoil
CMX07-X14	S07	S14	49.0	3-1/C TRXLPE, AL, LLDPE, 35kV-100%	4/0 AWG	Size-1/3+ (13x#14)	651.00	1953	Direct Buired, Trefoil
CMX14-JB301	S14	JB301	101.0	3-1/C TRXLPE, AL, LLDPE, 35kV-100%	4/0 AWG	Size-1/3+ (13x#14)	1082.55	3248	Direct Buired, Trefoil
CMJB301-CS	JB301	CS	452.0	3-1/C TRXLPE, AL, LLDPE, 35kV-100%	1250 kcmil	Size-1/6 (20x#12)	6250.78	18752	Direct Buired, Trefoil

BILL OF MATERIALS SUMMARY				
ITEM No.	MATERIAL	RATING	QTY	UNIT
1	CABLE	10x 3-1/C, 1000kcmil Cu, RWU-90, XLPE, Cu, 2kV	TBD	METER
2	CABLE	3-1/C, 4/0AWG AL, 35kV-100% INS. 1/3 C.N.	80,427	METER
3	CABLE	3-1/C, 500kcmil AL, 35kV-100% INS. 1/6 C.N.	15,175	METER
4	CABLE	3-1/C, 1250kcmil AL, 35kV-100% INS. 1/6 C.N.	35,694	METER
5	IN-LINE SPLICE KIT	35kV, 4/0 AWG, AL x 1/C	AS REQUIRED	NUMBER
6	IN-LINE SPLICE KIT	35kV, 500 kcmil, AL x 1/C	AS REQUIRED	NUMBER
7	IN-LINE SPLICE KIT	35kV, 1250 kcmil, AL x 1/C	AS REQUIRED	NUMBER
8	CABLE TERMINATION	DEADBREAK ELBOW CONNECTOR 35kV CLASS 200kV BIL 600A, AL	66 (1 PER PHASE)	NUMBER
9	CABLE TERMINATION	OUTDOOR TYPE TERMINATION KIT 35kV, AL	129 (1 PER PHASE)	NUMBER
10	SURGE ARRESTORS	METAL OXIDE SURGE ARRESTER 30kV DUTY CYCLE, 24.4kV MCOV INT. CLASS	33 (1 PER PHASE)	NUMBER
11	GROUND CABLE	STRANDED BARE COPPER CONDUCTOR, SIZE TO BE DETERMINED BY GROUNDING STUDY REPORT	TBD	METER
12	CABLE FAULT INDICATOR	RATING TBD	48 (1 PER PHASE)	NUMBER

Revision	By	Appd.	YY.MM.DD	
B	ISSUED FOR MUNICIPAL CONSENT	BM	AR	17.02.03
A	ISSUED FOR MUNICIPAL CONSENT	JM	JR	17.01.19

File Name	Dwg	Chkd.	Dgn.	YY.MM.DD
dwg_60104_AWF_E400_MC	BM	JR	SF/JM	15.12.07

Permit-Seal

ISSUED FOR PERMITTING

Client/Project



AMHERST ISLAND WIND PROJECT
75MW WIND FARM
Amherst Island, Loyalist Township, Ontario

Title

34.5kV COLLECTOR SYSTEM
FEEDER SINGLE LINE DIAGRAM
CABLE SCHEDULE & BOM

Project No.	Scale	
133560104	NOT TO SCALE	
Drawing No.	Sheet	Revision

V:\01355\active\133560104_40_Design\42_Drawing\42_Curren\Bacs_Collector_System\Municipal_Correm\dwg_60104_AWF_E400_MC.dwg 2017/02/03 4:57 PM By: nicola.bleke ORIGINAL SHEET - ARCHD

Notes

Legend

- S## WIND TURBINE GENERATOR (WTG)
- J### 34.5kV COLLECTOR CIRCUIT JUNCTION UNIT (PROPOSED LOCATION IN PRIVATE PROPERTY)
- SS 34.5kV/115kV SUBSTATION
- 34.5kV COLLECTOR CIRCUIT 1
- 34.5kV COLLECTOR CIRCUIT 2
- 34.5kV COLLECTOR CIRCUIT 3
- OVERHEAD 115kV TRANSMISSION LINE
- WOODED AREA
- WATER BODY
- WATERCOURSE
- MET METEOROLOGICAL TOWER (MET)

B	ISSUED FOR MUNICIPAL CONSENT	BM	AR	17.02.03
A	ISSUED FOR MUNICIPAL CONSENT	JM	AR	17.01.19
Revision		By	Appd.	YY.MM.DD
File Name: dwg_60104_AWF_E401.dwg		BM	AR	JR
		Dwn.	Chkd.	Dsgn.
				15.12.04
				YY.MM.DD

Permit Seal

ISSUED FOR PERMITTING

Client/Project

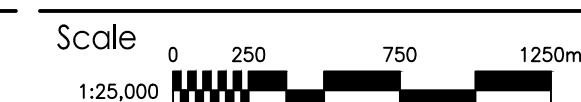


AMHERST ISLAND WIND PROJECT
75MW WIND FARM
Amherst Island, Loyalist Township, Ontario

Title

34.5kV COLLECTOR SYSTEM
OVERALL LAYOUT

Project No.
133560104



Drawing No.

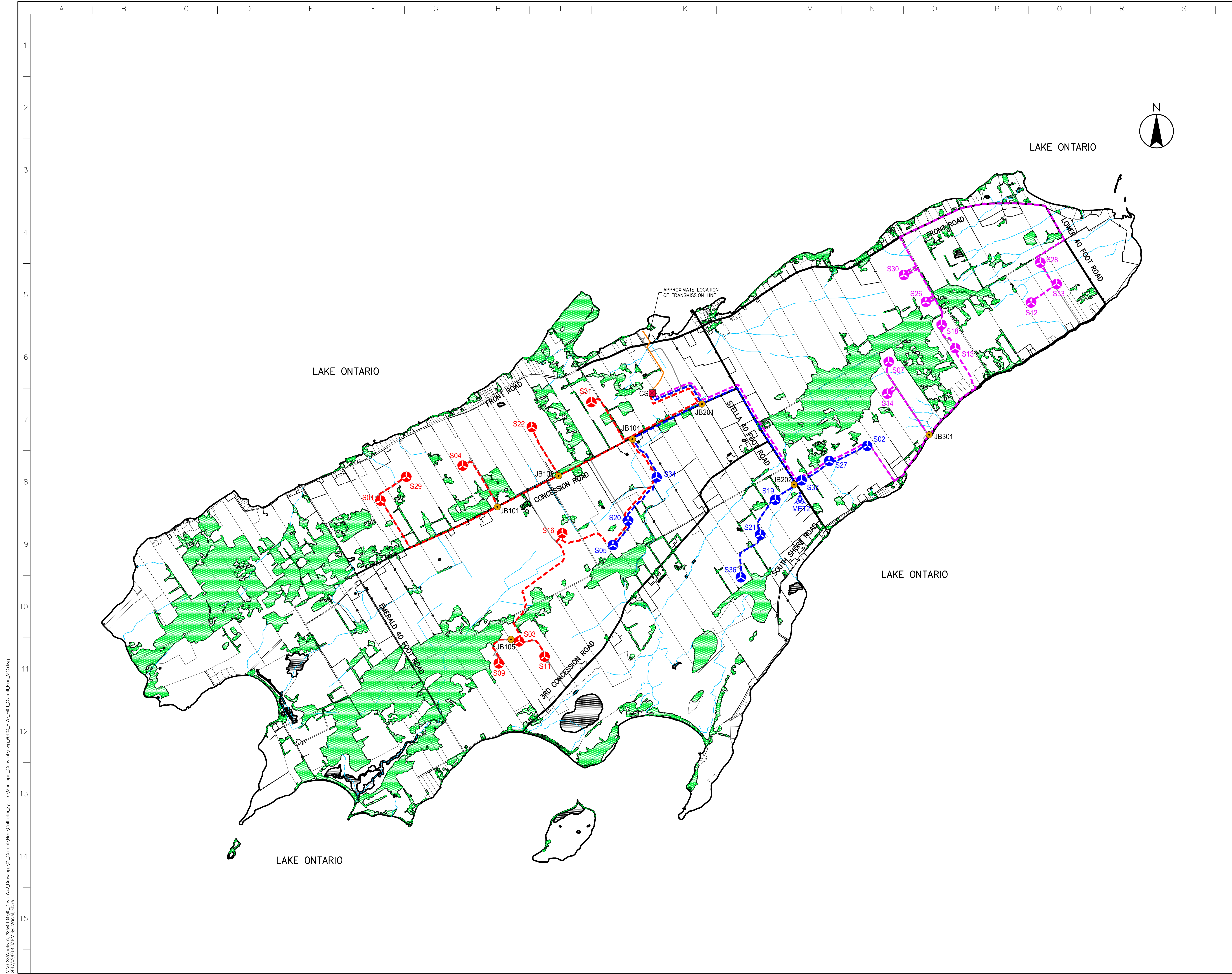
Sheet

Revision

E401A

1 of 2

B



V:\013356\active\133560104\40_Design\42_Drawing\02_Current\Bacs\Collector_System\Municipal_Consent\02_Overall_Plan_MC.dwg
 2017/02/03 4:29 PM By: nicola.bleke
 ORIGINAL SHEET - ARCHD

Notes

Legend

REFERENCE TO DRAWING E-XXX SHEET NUMBER

B	ISSUED FOR MUNICIPAL CONSENT	BM	AR	17.02.03
A	ISSUED FOR MUNICIPAL CONSENT	JM	AR	17.01.19
Revision		By	Appd.	YY.MM.DD
File Name: dwg_13356104_AWVF_E401.dwg		BM	AR	JR
		Dwn.	Chkd.	Dsgn.
				15.12.04
				YY.MM.DD

Permit-Seal

ISSUED FOR PERMITTING

Client/Project



AMHERST ISLAND WIND PROJECT
75MW WIND FARM
Amherst Island, Loyalist Township, Ontario

Title

34.5kV COLLECTOR SYSTEM
LAYOUT KEY PLAN

Project No.
13356104

Scale
1:25,000

Drawing No.

Sheet

Revision

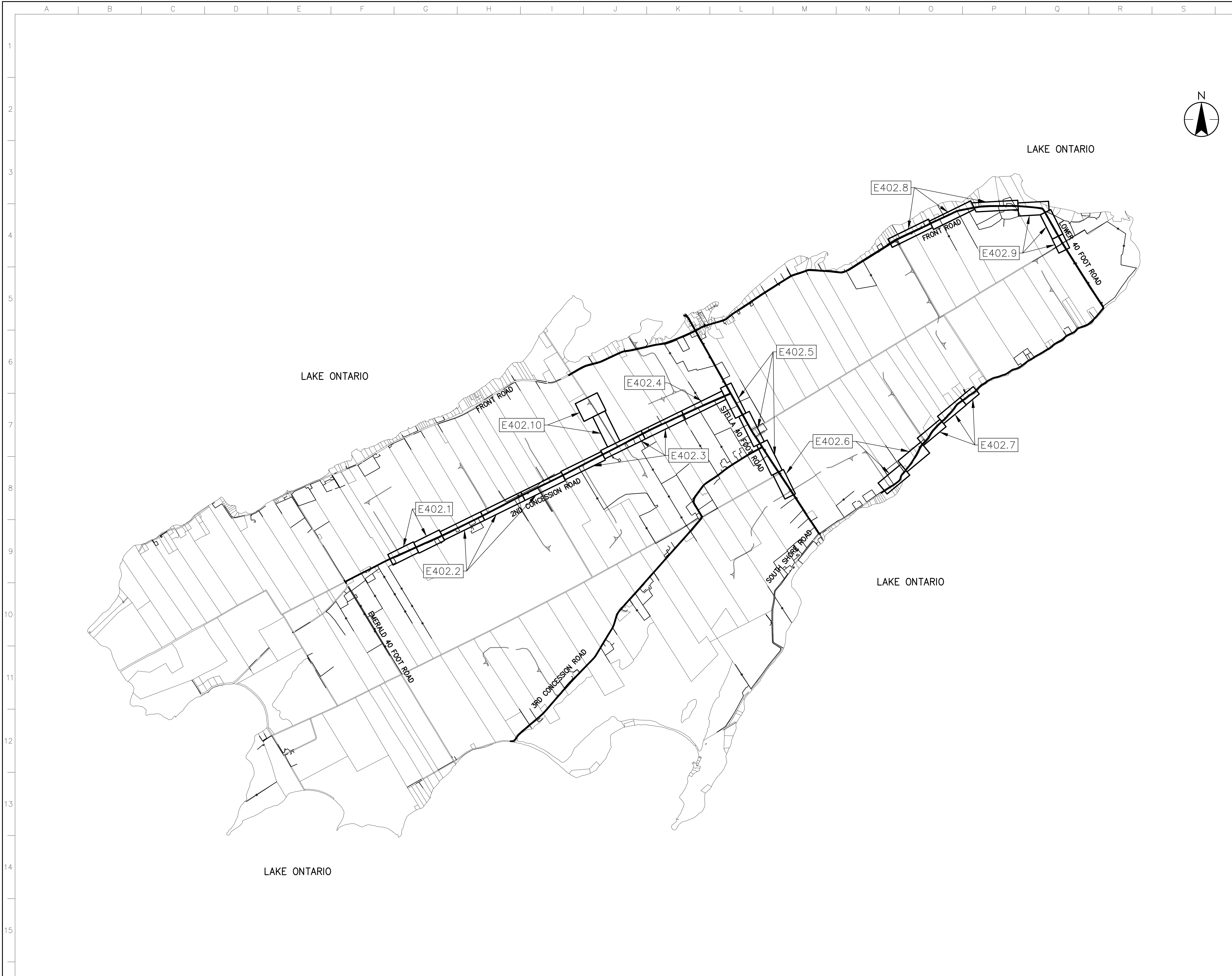
E401A

2 of 2

B

V:\013356\active\13356104_40_Design\42_Drawing\02_Collector_System\Municipal_Consemt\dwg_101_Doc_AWVF_E401_Coverall_Plan_MC.dwg
2017/02/04 4:38 PM By: nicola.blee

ORIGINAL SHEET - ARCHD



Copyright Reserved

The Contractor shall verify and be responsible for all dimensions. DO NOT scale the drawing - any errors or omissions shall be reported to Stantec without delay.
The Copyrights to all designs and drawings are the property of Stantec. Reproduction or use for any purpose other than that authorized by Stantec is forbidden.

Notes

- CULVERT CROSSINGS ON PRIVATE ACCESS ROADS HAVE NOT BEEN IDENTIFIED. CONTRACTOR SHALL COORDINATE CONSTRUCTION ACTIVITIES TO ENSURE CABLES ARE INSTALLED PRIOR TO CULVERTS.
- LINEWORK SHOWN FOR ACCESS ROADS ON PRIVATE PROPERTY IS BASED ON IN-PROGRESS DESIGN FROM STANTEC CIVIL ENGINEERING.
- FOR FIBER PULL BOX DETAILS REFER TO DRAWING E404-1.
- ALL ELECTRICAL WORK ASSOCIATED WITH THE COLLECTOR SYSTEM AND SHOWN ON THIS LAYOUT IS DIAGRAMMATIC AND SHALL COMPLY WITH THE CONSTRUCTIBLE LIMITS FOR THIS PROJECT ONCE LIMITS ARE CONFIRMED.

Legend

- S## WIND TURBINE GENERATOR (WTG)
- JB### 34.5kV COLLECTOR CIRCUIT JUNCTION UNIT (PROPOSED LOCATION)
- FJB# 34.5kV COLLECTOR CIRCUIT FIBER JUNCTION
- CS 34.5kV/115kV SUBSTATION
- 34.5kV COLLECTOR CIRCUIT 1
- 34.5kV COLLECTOR CIRCUIT 2
- 34.5kV COLLECTOR CIRCUIT 3
- CONSTRUCTION LIMIT
- WATERCOURSES
- WOODED AREA
- PROPERTY LINE
- FENCE
- TRENCHING AND BORING INSTALLATION REFERENCES. REFERS TO E400 SERIES DRAWING DETAILS
- TRENCHING AND BORING INSTALLATION REFERENCES. REFERS TO E400 SERIES DRAWING DETAILS

B	ISSUED FOR MUNICIPAL CONSENT	BM	AR	17.02.03
A	ISSUED FOR MUNICIPAL CONSENT	JM	AR	17.01.19
Issued		By	Appd.	YY.MM.DD
File Name:	dwg_60104_AJWF_E402.dwg	BM	JR	BM/JM
		Dwn.	Chkd.	Dgn.
				YY.MM.DD

Permit-Seal

ISSUED FOR PERMITTING

Client/Project



AMHERST ISLAND WIND PROJECT
75MW WIND FARM
Amherst Island, Loyalist Township, Ontario

Title

34.5kV COLLECTOR SYSTEM
OVERALL LAYOUT

Project No.
133560104



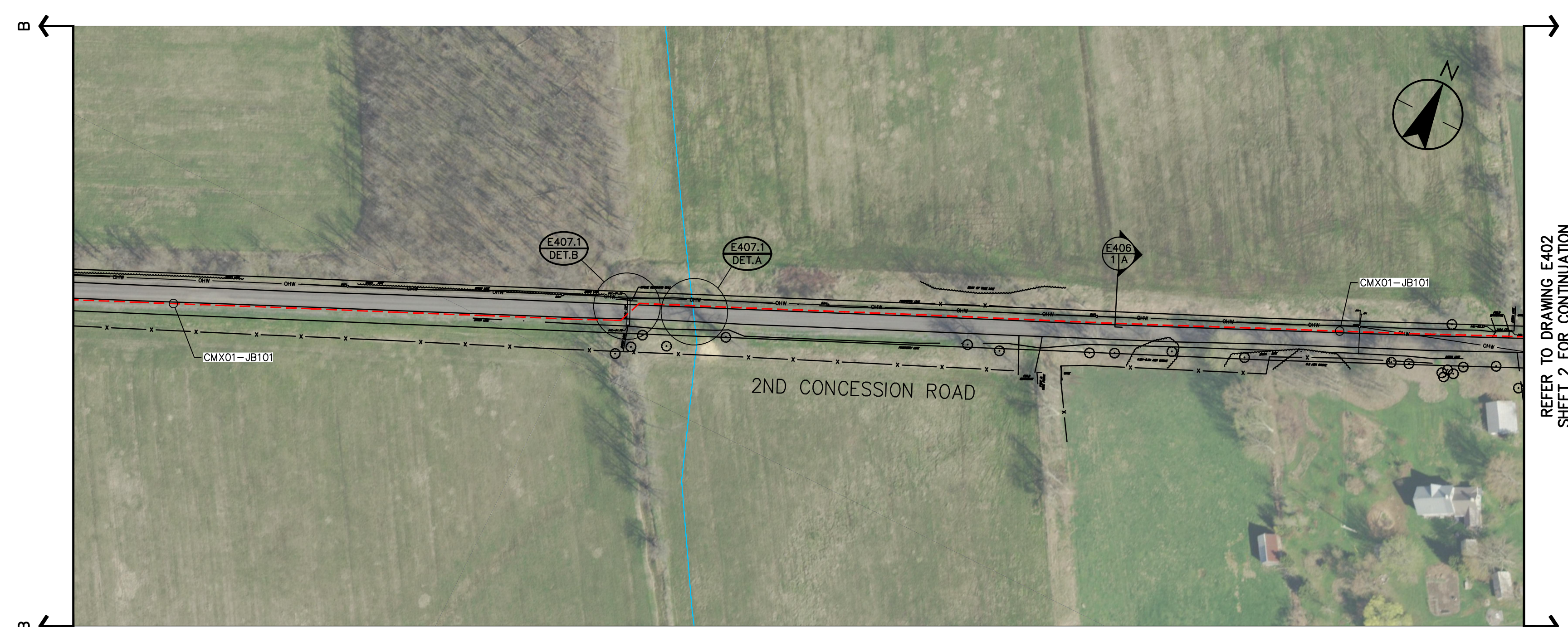
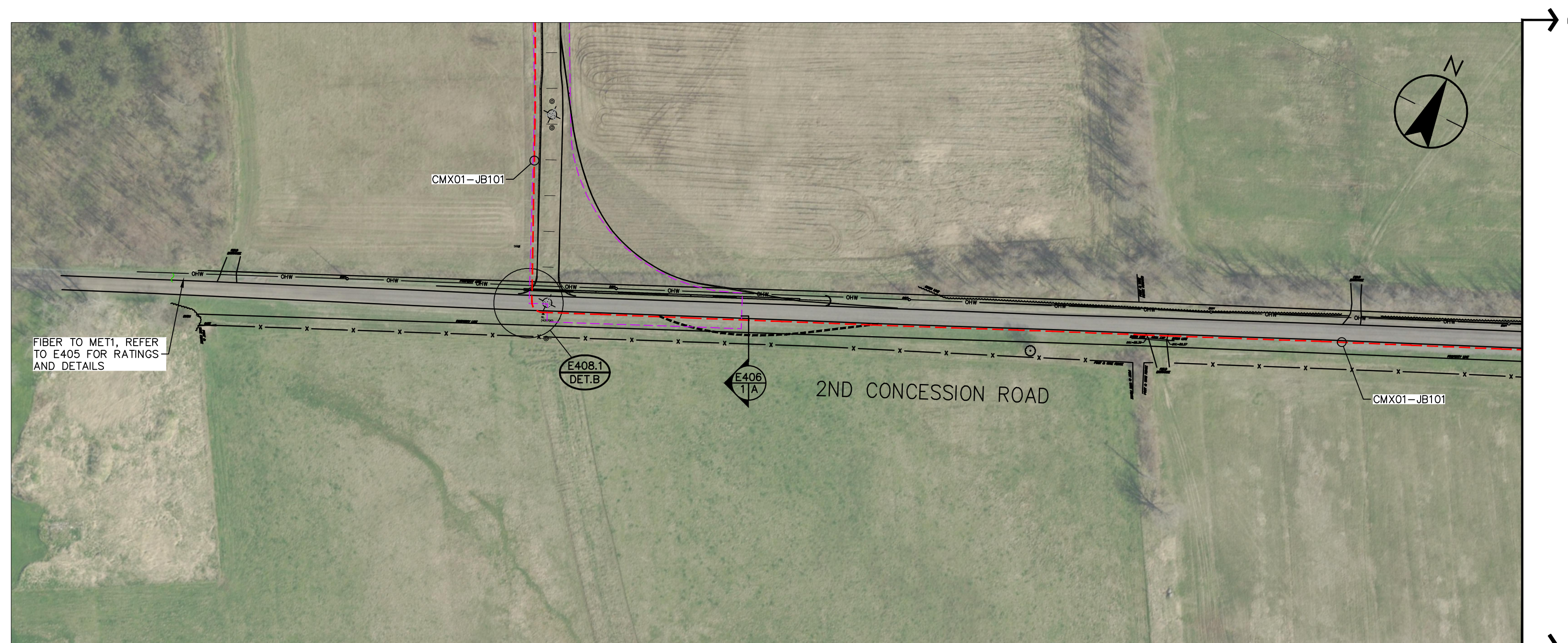
Drawing No.

Sheet 1 of 10 Revision

E402A

1 of 10

B



V:\0133560104\04_40_Design\42_Drawing\02_Collector_System\Municipal_Consent\dwg_60104_AJWF_E402_Plan_MC.dwg 2017/02/03 4:38 PM by: nicola.bleke

Copyright Reserved

The Contractor shall verify and be responsible for all dimensions. DO NOT scale the drawing - any errors or omissions shall be reported to Stantec without delay.
The Copyrights to all designs and drawings are the property of Stantec. Reproduction or use for any purpose other than that authorized by Stantec is forbidden.

Notes

- CULVERT CROSSINGS ON PRIVATE ACCESS ROADS HAVE NOT BEEN IDENTIFIED. CONTRACTOR SHALL COORDINATE CONSTRUCTION ACTIVITIES TO ENSURE CABLES ARE INSTALLED PRIOR TO CULVERTS.
- LINEWORK SHOWN FOR ACCESS ROADS ON PRIVATE PROPERTY IS BASED ON IN-PROGRESS DESIGN FROM STANTEC CIVIL ENGINEERING.
- FOR FIBER PULL BOX DETAILS REFER TO DRAWING E404-1.
- ALL ELECTRICAL WORK ASSOCIATED WITH THE COLLECTOR SYSTEM AND SHOWN ON THIS LAYOUT IS DIAGNOSTIC AND SHALL COMPLY WITH THE CONSTRUCTIBLE LIMITS FOR THIS PROJECT ONCE LIMITS ARE CONFIRMED.

Legend

- S## WIND TURBINE GENERATOR (WTG)
- JB### 34.5kV COLLECTOR CIRCUIT JUNCTION UNIT (PROPOSED LOCATION)
- FJB# 34.5kV COLLECTOR CIRCUIT FIBER JUNCTION
- CS 34.5kV/115kV SUBSTATION
- 34.5kV COLLECTOR CIRCUIT 1
- 34.5kV COLLECTOR CIRCUIT 2
- 34.5kV COLLECTOR CIRCUIT 3
- CONSTRUCTION LIMIT
- WATERCOURSES
- WOODED AREA
- PROPERTY LINE
- FENCE
- TRENCHING AND BORING INSTALLATION REFERENCES. REFERS TO E400 SERIES DRAWING DETAILS

B	ISSUED FOR MUNICIPAL CONSENT	BM	AR	17.02.03
A	ISSUED FOR MUNICIPAL CONSENT	JM	AR	17.01.19
Issued		By	Appd.	YY.MM.DD
File Name:	dwg_60104_AJWF_E402.dwg	BM	JR	BM/JM
		Dwn.	Chkd.	Dgn.
				YY.MM.DD

Permit-Seal

ISSUED FOR PERMITTING

Client/Project

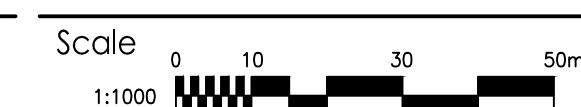


AMHERST ISLAND WIND PROJECT
75MW WIND FARM
Amherst Island, Loyalist Township, Ontario

Title

34.5kV COLLECTOR SYSTEM
OVERALL LAYOUT

Project No.
133560104



Drawing No.

Sheet

Revision

E402A

2 of 10

B



V:\0133560104\040_Design\42_Drawing\02_Collector_System\Municipal_Consent\dwg_60104_AJWF_E402_Plan_MC.dwg
2017/02/03 4:39 PM By: nicola.blee

Copyright Reserved

The Contractor shall verify and be responsible for all dimensions. DO NOT scale the drawing - any errors or omissions shall be reported to Stantec without delay.
The Copyrights to all designs and drawings are the property of Stantec. Reproduction or use for any purpose other than that authorized by Stantec is forbidden.

Notes

- CULVERT CROSSINGS ON PRIVATE ACCESS ROADS HAVE NOT BEEN IDENTIFIED. CONTRACTOR SHALL COORDINATE CONSTRUCTION ACTIVITIES TO ENSURE CABLES ARE INSTALLED PRIOR TO CULVERTS.
- LINEWORK SHOWN FOR ACCESS ROADS ON PRIVATE PROPERTY IS BASED ON IN-PROGRESS DESIGN FROM STANTEC CIVIL ENGINEERING.
- FOR FIBER PULL BOX DETAILS REFER TO DRAWING E404-1.
- ALL ELECTRICAL WORK ASSOCIATED WITH THE COLLECTOR SYSTEM AND SHOWN ON THIS LAYOUT IS DIAGNOSTIC AND SHALL COMPLY WITH THE CONSTRUCTIBLE LIMITS FOR THIS PROJECT ONCE LIMITS ARE CONFIRMED.

Legend

- S## WIND TURBINE GENERATOR (WTG)
- JB### 34.5kV COLLECTOR CIRCUIT JUNCTION UNIT (PROPOSED LOCATION)
- FJB# 34.5kV COLLECTOR CIRCUIT FIBER JUNCTION
- CS 34.5kV/115kV SUBSTATION
- 34.5kV COLLECTOR CIRCUIT 1
- 34.5kV COLLECTOR CIRCUIT 2
- 34.5kV COLLECTOR CIRCUIT 3
- CONSTRUCTION LIMIT
- WATERCOURSES
- WOODED AREA
- PROPERTY LINE
- FENCE
- TRENCHING AND BORING INSTALLATION REFERENCES. REFERS TO E400 SERIES DRAWING DETAILS
- TRENCHING AND BORING INSTALLATION REFERENCES. REFERS TO E400 SERIES DRAWING DETAILS

B	ISSUED FOR MUNICIPAL CONSENT	BM	AR	17.02.03
A	ISSUED FOR MUNICIPAL CONSENT	JM	AR	17.01.19
Issued		By Appd. YY.MM.DD		
File Name: dwtg_60104_AJWF_E402.dwg		BM	JR	BM/JM 15.12.02
		Dwn.	Chkd.	Dgn.
				YY.MM.DD

Permit Seal

ISSUED FOR PERMITTING

Client/Project



AMHERST ISLAND WIND PROJECT
75MW WIND FARM
Amherst Island, Loyalist Township, Ontario

Title

34.5kV COLLECTOR SYSTEM
OVERALL LAYOUT

Project No.
133560104

Drawing No.

Scale
1:1000

Sheet
3 of 10

Revision

E402A

3 of 10

B



V:\0133560104\04_40_Design\42_Drawing\02_Collector_System\Municipal_Consent\04_104_AJWF_E402_Plan_MC.dwg 2017/02/03 14:40:19 By: nicolai_blaue

- Notes
- CULVERT CROSSINGS ON PRIVATE ACCESS ROADS HAVE NOT BEEN IDENTIFIED. CONTRACTOR SHALL COORDINATE CONSTRUCTION ACTIVITIES TO ENSURE CABLES ARE INSTALLED PRIOR TO CULVERTS.
 - LINEWORK SHOWN FOR ACCESS ROADS ON PRIVATE PROPERTY IS BASED ON IN-PROGRESS DESIGN FROM STANTEC CIVIL ENGINEERING.
 - FOR FIBER PULL BOX DETAILS REFER TO DRAWING E404-1.
 - ALL ELECTRICAL WORK ASSOCIATED WITH THE COLLECTOR SYSTEM AND SHOWN ON THIS LAYOUT IS DIAGNOSTIC AND SHALL COMPLY WITH THE CONSTRUCTIBLE LIMITS FOR THIS PROJECT ONCE LIMITS ARE CONFIRMED.

Legend

- S## WIND TURBINE GENERATOR (WTG)
- JB### 34.5kV COLLECTOR CIRCUIT JUNCTION UNIT (PROPOSED LOCATION)
- FJB# 34.5kV COLLECTOR CIRCUIT FIBER JUNCTION
- CS 34.5kV/115kV SUBSTATION
- 34.5kV COLLECTOR CIRCUIT 1
- 34.5kV COLLECTOR CIRCUIT 2
- 34.5kV COLLECTOR CIRCUIT 3
- CONSTRUCTION LIMIT
- WATERCOURSES
- WOODED AREA
- PROPERTY LINE
- FENCE
- TRENCHING AND BORING INSTALLATION REFERENCES. REFERS TO E400 SERIES DRAWING DETAILS
- TRENCHING AND BORING INSTALLATION REFERENCES. REFERS TO E400 SERIES DRAWING DETAILS

B	ISSUED FOR MUNICIPAL CONSENT	BM	AR	17.02.03
A	ISSUED FOR MUNICIPAL CONSENT	JM	AR	17.01.19

Issued	By	Appd.	YY.MM.DD
--------	----	-------	----------

File Name:	dwg_60104_AWF_E402.dwg	BM	JR	BM/JM	15.12.02
		Dwn.	Chkd.	Dgn.	YY.MM.DD

Permit-Seal

ISSUED FOR PERMITTING

Client/Project



AMHERST ISLAND WIND PROJECT
75MW WIND FARM
Amherst Island, Loyalist Township, Ontario

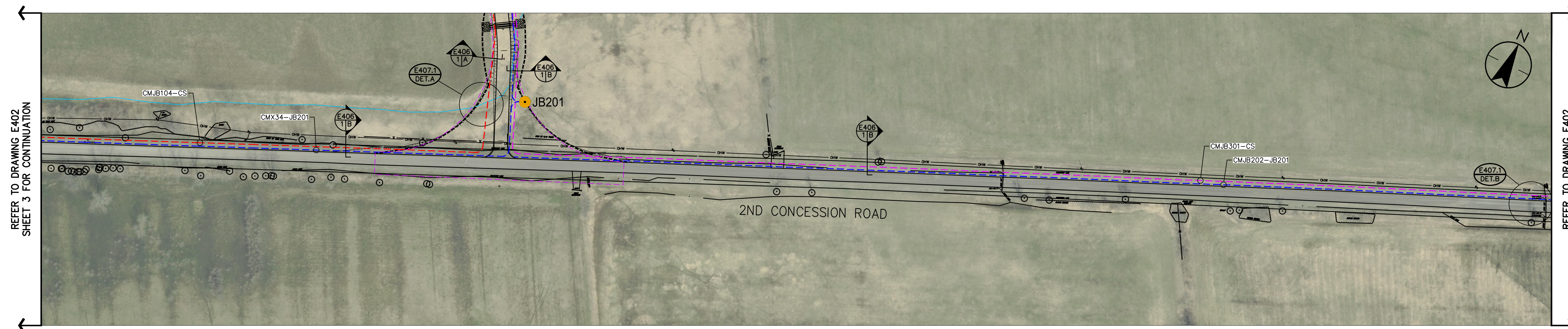
Title

34.5kV COLLECTOR SYSTEM
OVERALL LAYOUT

Project No.	Scale
133560104	1:1000

Drawing No.	Sheet	Revision
E402A	4 of 10	B

E402A 4 of 10 B



REFER TO DRAWING E402 SHEET 3 FOR CONTINUATION

REFER TO DRAWING E402 SHEET 5 FOR CONTINUATION

Copyright Reserved

The Contractor shall verify and be responsible for all dimensions. DO NOT scale the drawing - any errors or omissions shall be reported to Stantec without delay.
The Copyrights to all designs and drawings are the property of Stantec. Reproduction or use for any purpose other than that authorized by Stantec is forbidden.

Notes

- CULVERT CROSSINGS ON PRIVATE ACCESS ROADS HAVE NOT BEEN IDENTIFIED. CONTRACTOR SHALL COORDINATE CONSTRUCTION ACTIVITIES TO ENSURE CABLES ARE INSTALLED PRIOR TO CULVERTS.
- LINEWORK SHOWN FOR ACCESS ROADS ON PRIVATE PROPERTY IS BASED ON IN-PROGRESS DESIGN FROM STANTEC CIVIL ENGINEERING.
- FOR FIBER PULL BOX DETAILS REFER TO DRAWING E404-1.
- ALL ELECTRICAL WORK ASSOCIATED WITH THE COLLECTOR SYSTEM AND SHOWN ON THIS LAYOUT IS DIAGRAMMATIC AND SHALL COMPLY WITH THE CONSTRUCTIBLE LIMITS FOR THIS PROJECT ONCE LIMITS ARE CONFIRMED.

Legend

- S## WIND TURBINE GENERATOR (WTG)
- JB### 34.5kV COLLECTOR CIRCUIT JUNCTION UNIT (PROPOSED LOCATION)
- FJB# 34.5kV COLLECTOR CIRCUIT FIBER JUNCTION
- CS 34.5kV/115kV SUBSTATION
- 34.5kV COLLECTOR CIRCUIT 1
- 34.5kV COLLECTOR CIRCUIT 2
- 34.5kV COLLECTOR CIRCUIT 3
- CONSTRUCTION LIMIT
- WATERCOURSES
- WOODED AREA
- PROPERTY LINE
- FENCE
- TRENCHING AND BORING INSTALLATION REFERENCES. REFERS TO E400 SERIES DRAWING DETAILS

B	ISSUED FOR MUNICIPAL CONSENT	BM	AR	17.02.03
A	ISSUED FOR MUNICIPAL CONSENT	JM	AR	17.01.19
Issued		By	Appd.	YY.MM.DD
File Name:	dwg_60104_AWF_E402.dwg	BM	JR	BM/JM
		Dwn.	Chkd.	Dgn.
				YY.MM.DD

Permit-Seal

ISSUED FOR PERMITTING

Client/Project

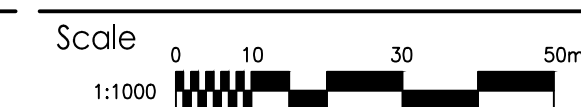


AMHERST ISLAND WIND PROJECT
75MW WIND FARM
Amherst Island, Loyalist Township, Ontario

Title

34.5kV COLLECTOR SYSTEM
OVERALL LAYOUT

Project No.
133560104



Drawing No.

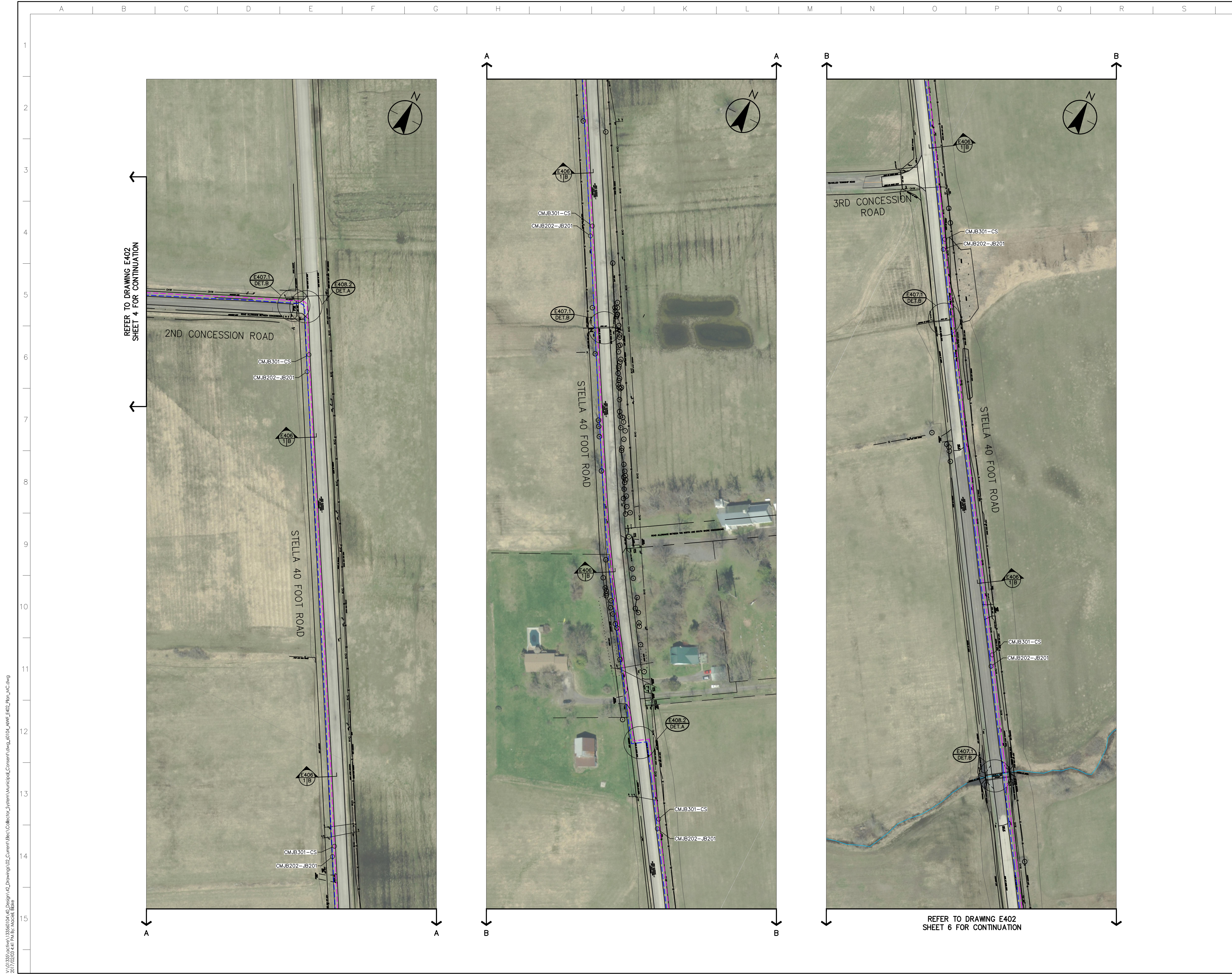
Sheet

Revision

E402A

5 of 10

B



REFER TO DRAWING E402
SHEET 4 FOR CONTINUATION

REFER TO DRAWING E402
SHEET 6 FOR CONTINUATION

V:\0133560104\040_Design\42_Drawing\02_Constr\System\Municipal_Constr\dwg_60104_AWF_E402_2hm_MC.dwg
2017/02/03 4:41 PM Bjr, Nicole, Blake