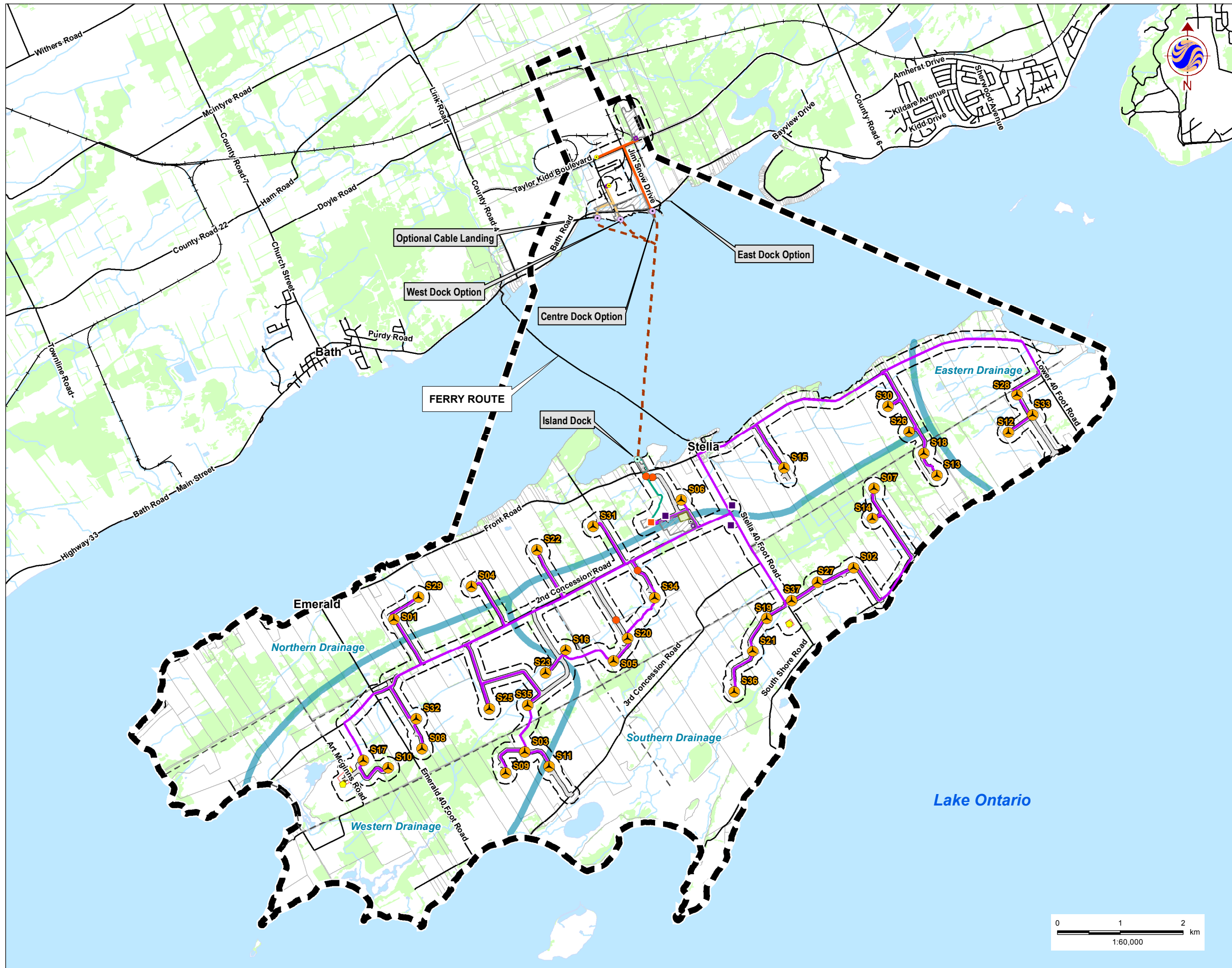


Appendix A

Figures



Legend

- Project Study Area
- 120m Zone of Investigation
- Project Components**
- Turbine
- Met Tower (Potential Location)
- Substation (Potential Location)
- Access Road
- Collector Lines
- Submarine Cable Path
- Operation and Maintenance Building (Potential Location)
- Potential Culvert Location
- Point of Common Coupling
- Mainland Cable Vault (Potential Location)
- Island Cable Vault
- Aboveground Storage Tanks (Potential Location)
- Constructible Area
- Mainland Dock (Potential Location)
- Island Dock
- Batch Plant (Potential Location)
- Site Office (Potential Location)
- Storage Shed
- Transmission Lines**
- Mainland Option 1
- Mainland Option 2
- Island Transmission Line
- Land Use**
- Central Staging Area
- Switching Station (Potential Location)
- Existing Features**
- Road
- Unopened Road Allowance
- Railway
- Watercourse
- Waterbody
- Wooded Area
- Property Boundary
- Drainage Area

Notes

1. Coordinate System: UTM NAD 83 - Zone 18 (N).
2. Base features produced under license with the Ontario Ministry of Natural Resources © Queen's Printer for Ontario, 2013.



Stantec

November 2013
160960595

Client/Project

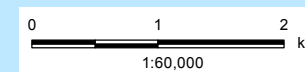
WINDLECTRIC INC.
AMHERST ISLAND WIND ENERGY PROJECT

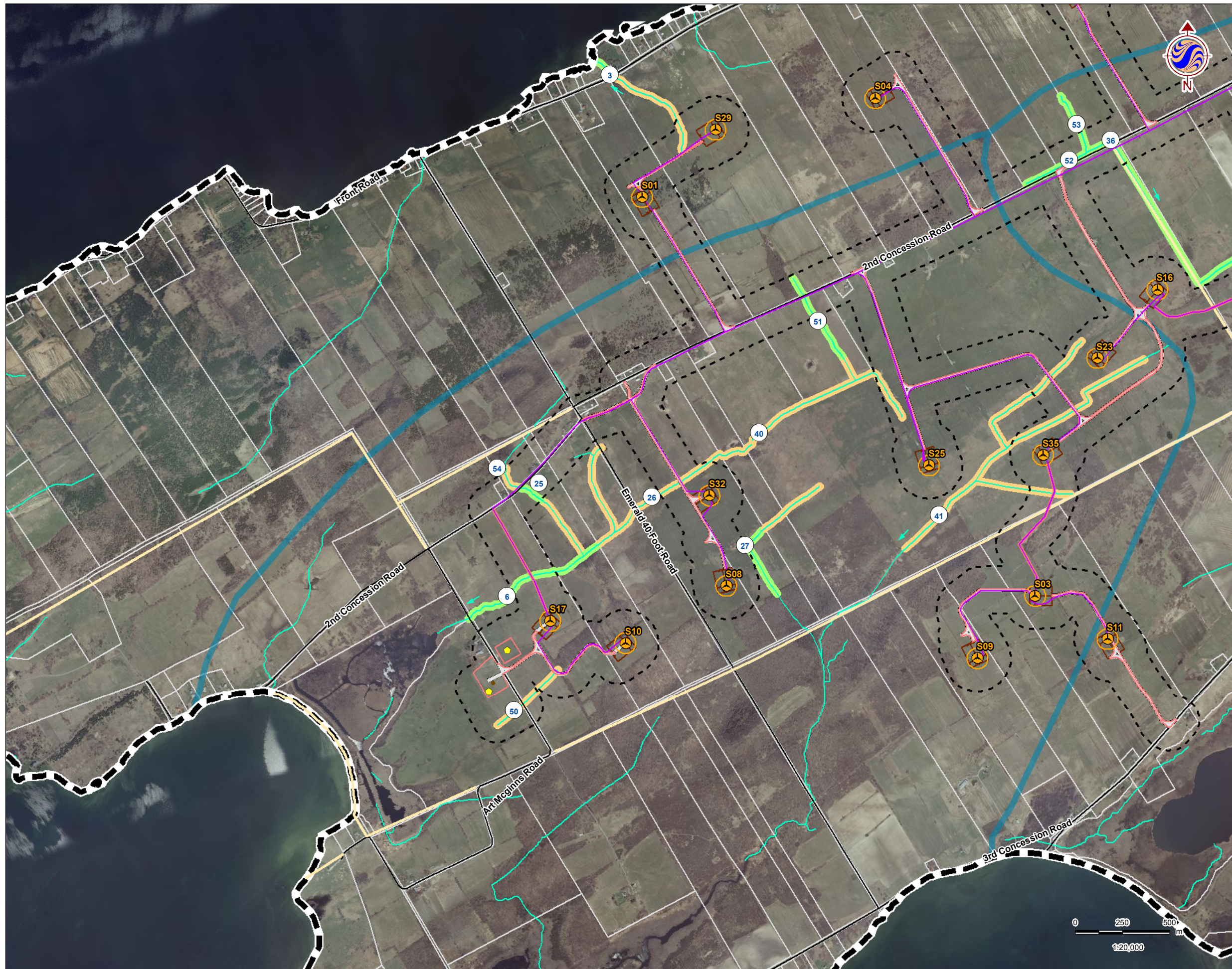
Figure No.

1

Title

**Location of Study Area and
Subwatersheds**





Legend

- Study Area
- 120m Zone of Investigation
- Project Components**
- Turbine
- Met Tower (Potential Location)
- Access Road
- Collector Lines
- Submarine Cable Path
- Laydown Area and Crane Path
- Submarine Cable Path
- Operation and Maintenance Building (Potential Location)
- Storage Shed
- Turbine Blade Tips
- Substation (Potential Location)
- Potential Culvert Location
- Point of Common Coupling
- Mainland Cable Vault (Potential Location)
- Island Cable Vault
- Aboveground Storage Tanks (Potential Location)
- Constructible Area
- Mainland Dock (Potential Location)
- Island Dock
- Batch Plant (Potential Location)
- Site Office (Potential Location)
- Transmission Lines**
- Mainland Option 1
- Mainland Option 2
- Island Transmission Line
- Land Use**
- Central Staging Area
- Switching Station (Potential Location)
- Existing Features**
- Road
- Unopened Road Allowance
- Railway
- Watercourse (modified by Stantec)
- Direction of Flow
- Property Line
- REA Water Body
- Not a REA Water Body
- Water Assessment Station Number
- Drainage Area

Notes

1. Coordinate System: UTM NAD 83 - Zone 18 (N).
2. Base features produced under license with the Ontario Ministry of Natural Resources © Queen's Printer for Ontario, 2013. Project layout S19 - revision 3.
3. Imagery Source: First Base Solutions ©, 2013. Imagery Date: 2008



Stantec

November 2013
160960595

Client/Project

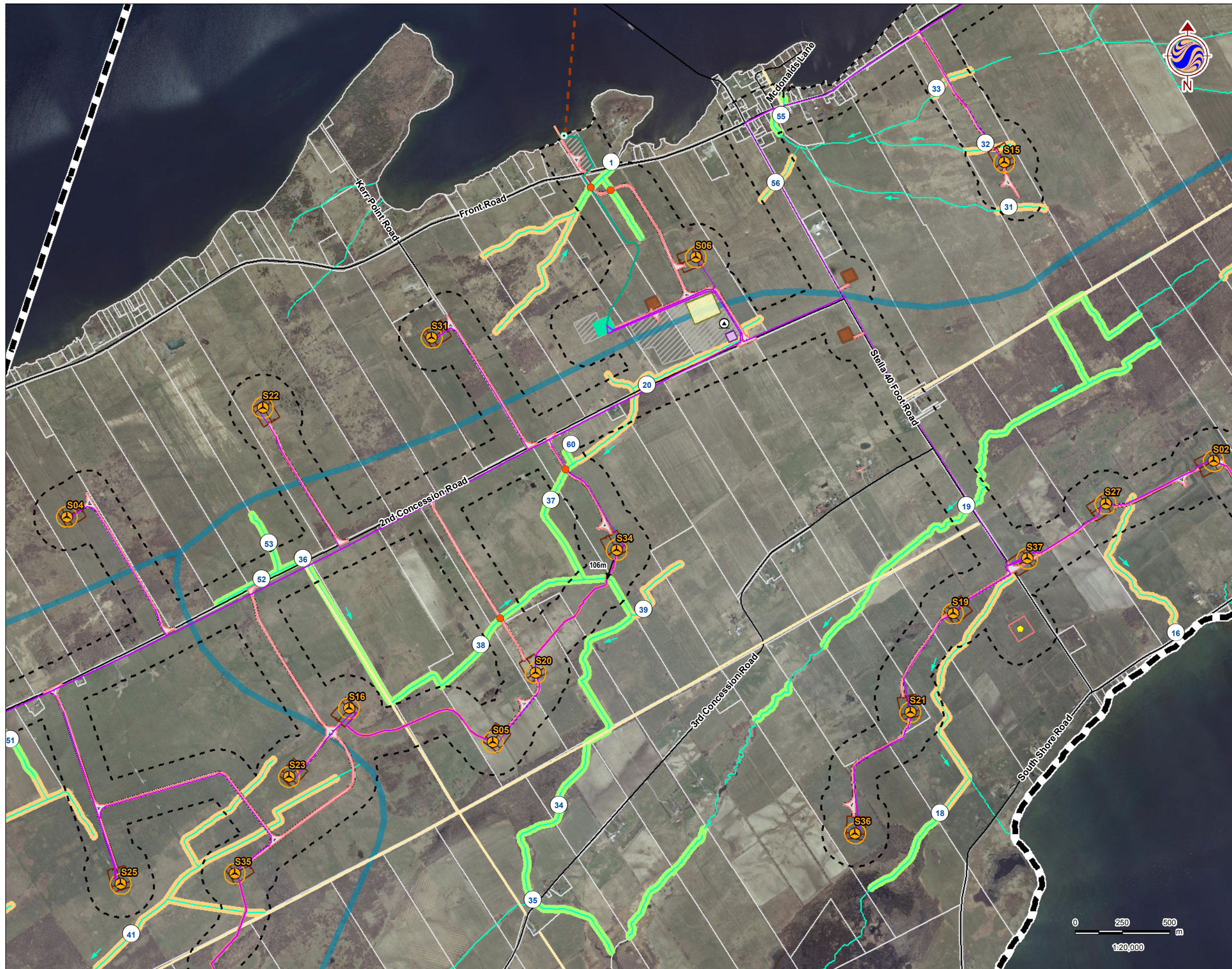
WINDLECTRIC INC.
AMHERST ISLAND WIND ENERGY PROJECT

Figure No.

2 (1 of 4)

Title

**Water Body Locations and
Water Assessment Survey Stations**



Legend

- Study Area
- 120m Zone of Investigation
- Project Components**
- Turbine
- Met Tower (Potential Location)
- Access Road
- Collector Lines
- Submarine Cable Path
- Laydown Area and Crane Path
- Submarine Cable Path
- Operation and Maintenance Building (Potential Location)
- Storage Shed
- Turbine Blade Tips
- Substation (Potential Location)
- Potential Culvert Location
- Point of Common Coupling
- Mainland Cable Vault (Potential Location)
- Island Cable Vault
- Aboveground Storage Tanks (Potential Location)
- Constructible Area
- Mainland Dock (Potential Location)
- Island Dock
- Batch Plant (Potential Location)
- Site Office (Potential Location)
- Transmission Lines**
- Mainland Option 1
- Mainland Option 2
- Island Transmission Line
- Land Use**
- Central Staging Area
- Switching Station (Potential Location)
- Existing Features**
- Road
- Unopened Road Allowance
- Railway
- Watercourse (modified by Stantec)
- Direction of Flow
- Property Line
- REA Water Body
- Not a REA Water Body
- Water Assessment Station Number
- Drainage Area

Notes

1. Coordinate System: UTM NAD 83 - Zone 18 (N).
2. Base features produced under license with the Ontario Ministry of Natural Resources © Queen's Printer for Ontario, 2013. Project layout S19 - revision 3.
3. Imagery Source: First Base Solutions ©, 2013. Imagery Date: 2008



Stantec

November 2013
160960595

Client/Project
WINDLECTRIC INC.
AMHERST ISLAND WIND ENERGY PROJECT

Figure No.
2 (2 of 4)

Title
**Water Body Locations and
Water Assessment Survey Stations**



Legend

- Study Area
- 120m Zone of Investigation
- Project Components**
- Turbine
- Met Tower (Potential Location)
- Access Road
- Collector Lines
- Submarine Cable Path
- Laydown Area and Crane Path
- Submarine Cable Path
- Operation and Maintenance Building (Potential Location)
- Storage Shed
- Turbine Blade Tips
- Substation (Potential Location)
- Potential Culvert Location
- Point of Common Coupling
- Mainland Cable Vault (Potential Location)
- Island Cable Vault
- Aboveground Storage Tanks (Potential Location)
- Constructible Area
- Mainland Dock (Potential Location)
- Island Dock
- Batch Plant (Potential Location)
- Site Office (Potential Location)
- Transmission Lines**
- Mainland Option 1
- Mainland Option 2
- Island Transmission Line
- Land Use**
- Central Staging Area
- Switching Station (Potential Location)
- Existing Features**
- Road
- Unopened Road Allowance
- Railway
- Watercourse (modified by Stantec)
- Direction of Flow
- Property Line
- REA Water Body
- Not a REA Water Body
- Water Assessment Station Number
- Drainage Area

Notes

1. Coordinate System: UTM NAD 83 - Zone 18 (N).
2. Base features produced under license with the Ontario Ministry of Natural Resources © Queen's Printer for Ontario, 2013. Project layout S19 - revision 3.
3. Imagery Source: First Base Solutions ©, 2013. Imagery Date: 2008



Stantec

November 2013
160960595

Client/Project

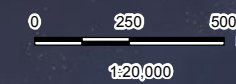
WINDLECTRIC INC.
AMHERST ISLAND WIND ENERGY PROJECT

Figure No.

2 (3 of 4)

Title

**Water Body Locations and
Water Assessment Survey Stations**





Legend

- Study Area
- 120m Zone of Investigation
- Project Components**
- Turbine
- Met Tower (Potential Location)
- Access Road
- Collector Lines
- Submarine Cable Path
- Laydown Area and Crane Path
- Submarine Cable Path
- Operation and Maintenance Building (Potential Location)
- Storage Shed
- Turbine Blade Tips
- Substation (Potential Location)
- Potential Culvert Location
- Point of Common Coupling
- Mainland Cable Vault (Potential Location)
- Island Cable Vault
- Aboveground Storage Tanks (Potential Location)
- Constructible Area
- Mainland Dock (Potential Location)
- Island Dock
- Batch Plant (Potential Location)
- Site Office (Potential Location)
- Transmission Lines**
- Mainland Option 1
- Mainland Option 2
- Island Transmission Line
- Land Use**
- Central Staging Area
- Switching Station (Potential Location)
- Existing Features**
- Road
- Unopened Road Allowance
- Railway
- Watercourse (modified by Stantec)
- Direction of Flow
- Property Line
- REA Water Body
- Not a REA Water Body
- Water Assessment Station Number
- Drainage Area

Notes

1. Coordinate System: UTM NAD 83 - Zone 18 (N).
2. Base features produced under license with the Ontario Ministry of Natural Resources © Queen's Printer for Ontario, 2013. Project layout S19 - revision 3.
3. Imagery Source: First Base Solutions ©, 2013. Imagery Date: 2008



Stantec

November 2013
160960595

Client/Project

WINDLECTRIC INC.
AMHERST ISLAND WIND ENERGY PROJECT

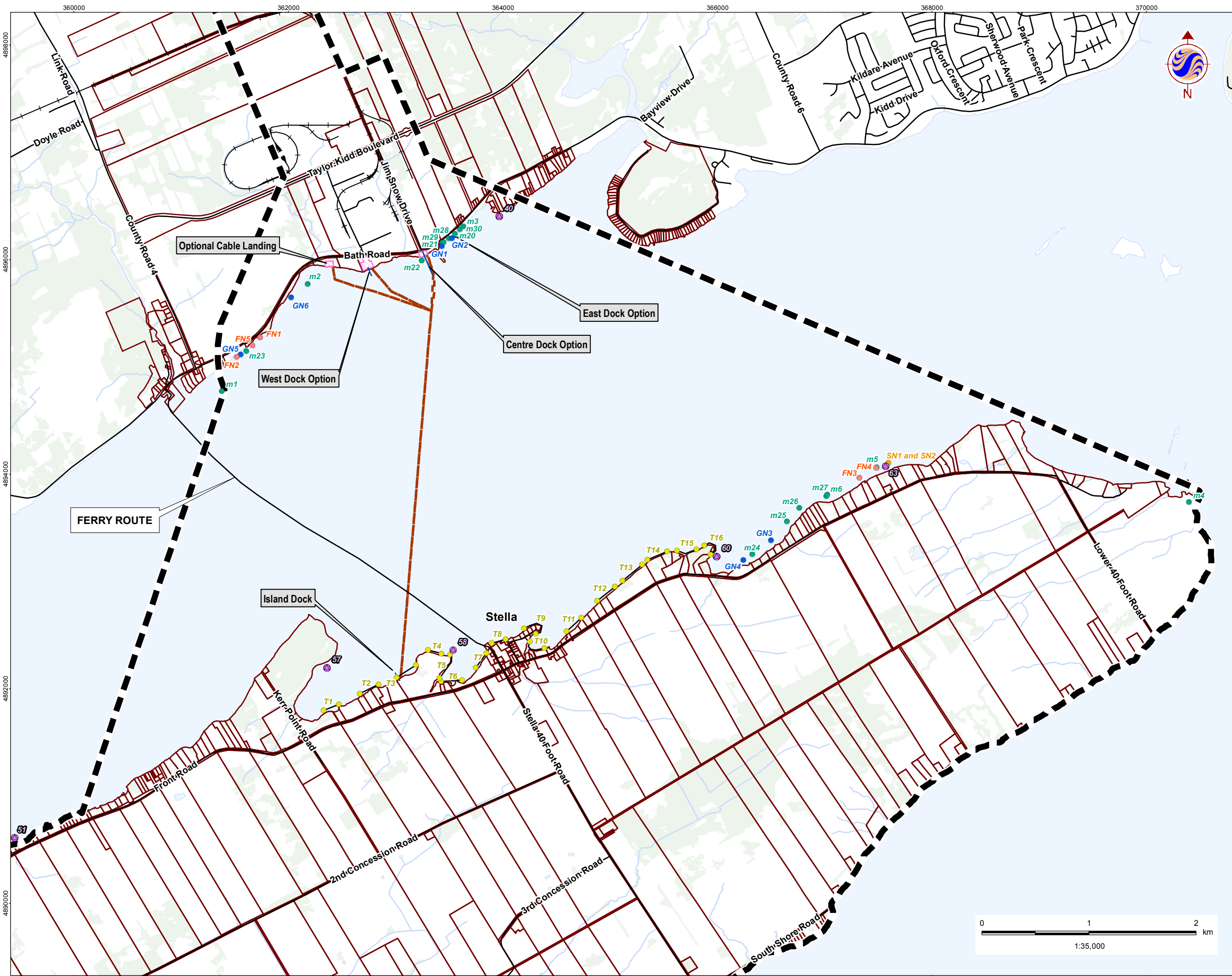
Figure No.

2 (4 of 4)

Title

**Water Body Locations and
Water Assessment Survey Stations**





Legend

- Project Study Area
- Project Components**
 - Submarine Cable Path
 - Dock Footprint
 - Optional Cable Landing
- Existing Features**
 - Road
 - Railway
 - Watercourse
 - Property Boundaries
 - Waterbody
 - Wooded Area
- Fish Survey Methods**
 - FN1 Fyke Nets
 - GN1 Gill Nets
 - m1 Minnow Traps
 - SN1 Seine Net
 - T1 Electrofishing Transect
 - LOMU Fish Sampling Stations – 2009

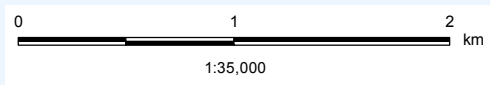
- ### Notes
1. Coordinate System: UTM NAD 83 - Zone 18 (N).
 2. Base features produced under license with the Ontario Ministry of Natural Resources © Queen's Printer for Ontario, 2012.

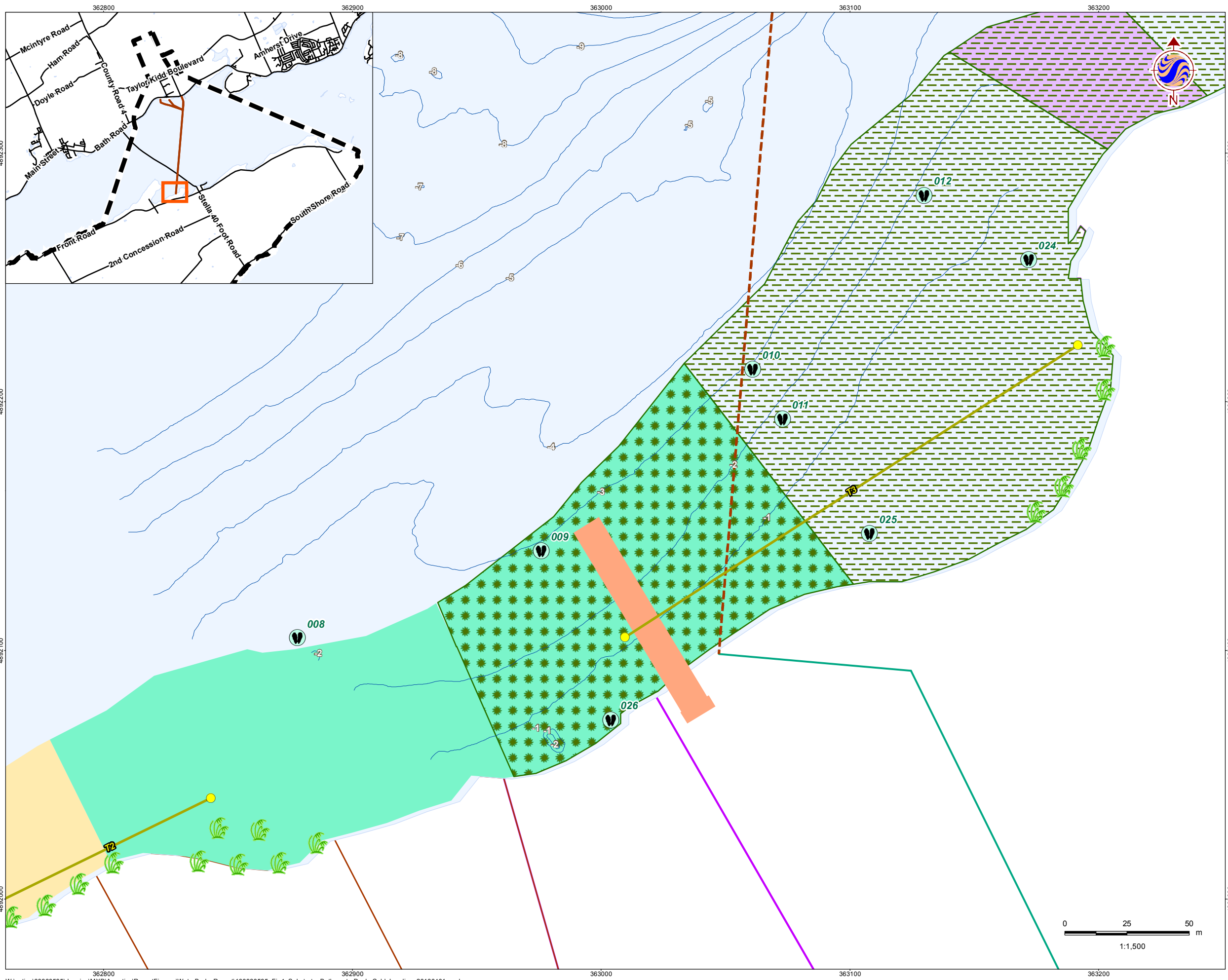
April, 2013
160960595

Client/Project
WINDLECTRIC INC.
AMHERST ISLAND WIND ENERGY PROJECT

Figure No.
3

Title
Fish Collection Stations in Lake Ontario





Legend

- Study Area
- Transformer
- Collector Line
- Unopened Road Allowance
- Bathymetry Contour (metres ASL)
- Road
- Watercourse
- Waterbody
- Optional Property
- Property Boundary
- Mainland Dock (Potential Location)
- Island Dock
- Optional Cable Landing
- Submarine Cable Path

Transmission Lines

- Mainland Option 1
- Mainland Option 2
- Island Transmission Line

Substrate

- Bedrock
- Cobble (patchy)
- Cobble/Sand
- Cobble/Sand/Gravel
- Sand
- Sand/Gravel
- Sand/Silt/Cobble
- Sand/Milfoil

Vegetation

- Milfoil
- Overhanging Terrestrial Vegetation
- Scattered, Sparse Submergent Vegetation
- Weedbed
- Weedbed/Scattered Vegetation
- Emergent Vegetation

Other

- Logs, in Water Cover
- Rocks
- Bass Bed/Nest

Fish Survey Locations

- FN1 Fyke Nets
- GN1 Gill Nets
- m1 Minnow Traps
- SN1 Seine Net
- T1 Electrofishing Transect
- 00 LOMU Fish Sampling Stations - 2009
- 010 Mussel Survey - Sept 2011

Notes

- Coordinate System: UTM NAD 83 - Zone 18 (N).
- Base features produced under license with the Ontario Ministry of Natural Resources © Queen's Printer for Ontario, 2012.

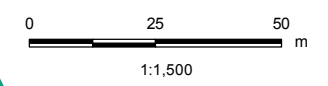


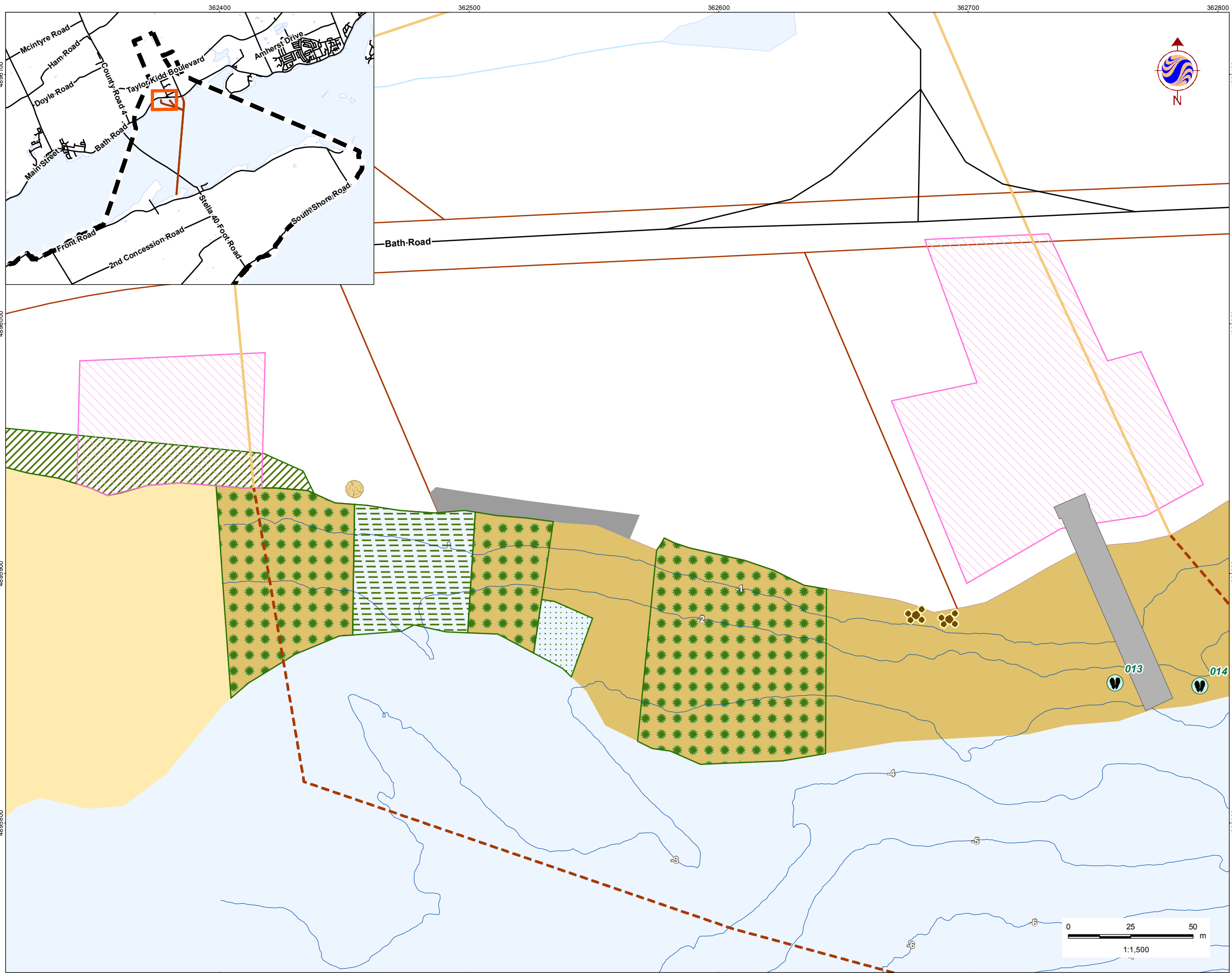
April, 2013
160960595

Client/Project
WINDLECTRIC INC.
AMHERST ISLAND WIND ENERGY PROJECT

Figure No.
4 (1 of 4)

Title
Substrate and Bathymetry at Dock and Cable Landing Sites
Island Dock





- ### Legend
- Study Area
 - Transformer
 - Collector Line
 - Unopened Road Allowance
 - Bathymetry Contour (metres ASL)
 - Road
 - Watercourse
 - Waterbody
 - Optioned Property
 - Property Boundary
 - Mainland Dock (Potential Location)
 - Island Dock
 - Optional Cable Landing
 - Submarine Cable Path
- #### Transmission Lines
- Mainland Option 1
 - Mainland Option 2
 - Island Transmission Line
- #### Substrate
- Bedrock
 - Cobble (patchy)
 - Cobble/Sand
 - Cobble/Sand/Gravel
 - Sand
 - Sand/Gravel
 - Sand/Silt/Cobble
 - Sand/Milfoil
- #### Vegetation
- Milfoil
 - Overhanging Terrestrial Vegetation
 - Scattered, Sparse Submergent Vegetation
 - Weedbed
 - Weedbed/Scattered Vegetation
 - Emergent Vegetation
- #### Other
- Logs, in Water Cover
 - Rocks
 - Bass Bed/Nest
- #### Fish Survey Locations
- Fyke Nets
 - Gill Nets
 - Minnow Traps
 - Seine Net
 - Electrofishing Transect
 - LOMU Fish Sampling Stations - 2009
 - Mussel Survey - Sept 2011

Notes

1. Coordinate System: UTM NAD 83 - Zone 18 (N).
2. Base features produced under license with the Ontario Ministry of Natural Resources © Queen's Printer for Ontario, 2012.



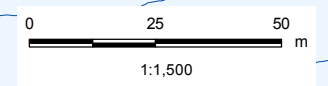
Stantec

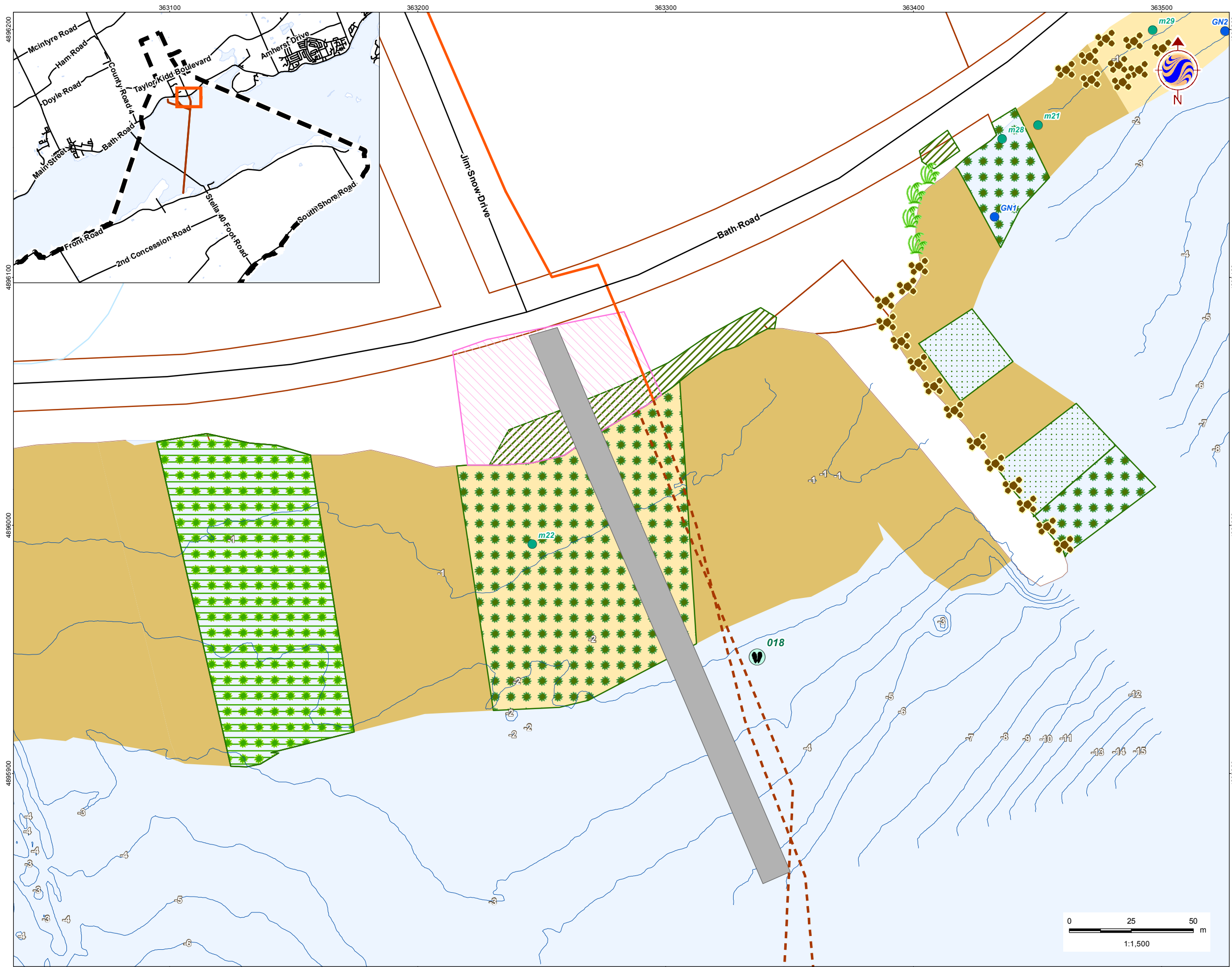
April, 2013
160960595

Client/Project
WINDLECTRIC INC.
AMHERST ISLAND WIND ENERGY PROJECT

Figure No.
4 (2 of 4)

Title
Substrate and Bathymetry at Dock and Cable Landing Sites
Mainland Dock – West Option and Optional Cable Landing Area





- ### Legend
- Study Area
 - Transformer
 - Collector Line
 - Unopened Road Allowance
 - Bathymetry Contour (metres ASL)
 - Road
 - Watercourse
 - Waterbody
 - Optional Property
 - Property Boundary
 - Mainland Dock (Potential Location)
 - Island Dock
 - Optional Cable Landing
 - Submarine Cable Path
- #### Transmission Lines
- Mainland Option 1
 - Mainland Option 2
 - Island Transmission Line
- #### Substrate
- Bedrock
 - Cobble (patchy)
 - Cobble/Sand
 - Cobble/Sand/Gravel
 - Sand
 - Sand/Gravel
 - Sand/Silt/Cobble
 - Sand/Milfoil
- #### Vegetation
- Milfoil
 - Overhanging Terrestrial Vegetation
 - Scattered, Sparse Submergent Vegetation
 - Weedbed
 - Weedbed/Scattered Vegetation
 - Emergent Vegetation
- #### Other
- Logs, in Water Cover
 - Rocks
 - Bass Bed/Nest
- #### Fish Survey Locations
- Fyke Nets
 - Gill Nets
 - Minnow Traps
 - Seine Net
 - Electrofishing Transect
 - LOMU Fish Sampling Stations – 2009
 - Mussel Survey - Sept 2011

Notes

- Coordinate System: UTM NAD 83 - Zone 18 (N).
- Base features produced under license with the Ontario Ministry of Natural Resources © Queen's Printer for Ontario, 2012.



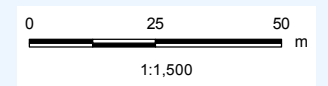
Stantec

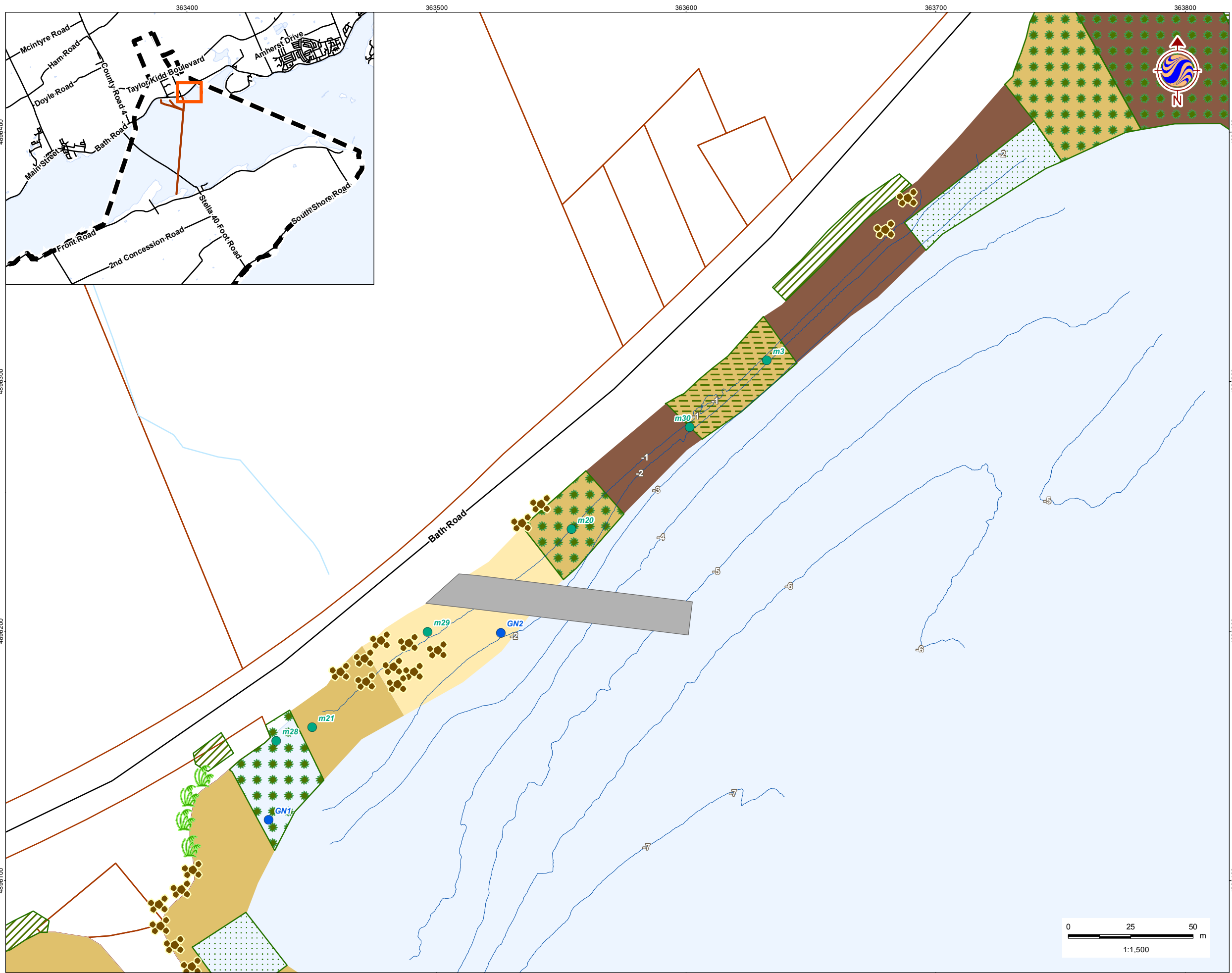
April, 2013
160960595

Client/Project
WINDLECTRIC INC.
AMHERST ISLAND WIND ENERGY PROJECT

Figure No.
4 (3 of 4)

Title
Substrate and Bathymetry at Dock and Cable Landing Sites
Mainland Dock – Centre Option





Legend

- Study Area
- Transformer
- Collector Line
- Unopened Road Allowance
- Bathymetry Contour (metres ASL)
- Road
- Watercourse
- Waterbody
- Optioned Property
- Property Boundary
- Mainland Dock (Potential Location)
- Island Dock
- Optional Cable Landing
- Submarine Cable Path

Transmission Lines

- Mainland Option 1
- Mainland Option 2
- Island Transmission Line

Substrate

- Bedrock
- Cobble (patchy)
- Cobble/Sand
- Cobble/Sand/Gravel
- Sand
- Sand/Gravel
- Sand/Silt/Cobble
- Sand/Milfoil

Vegetation

- Milfoil
- Overhanging Terrestrial Vegetation
- Scattered, Sparse Submergent Vegetation
- Weedbed
- Weedbed/Scattered Vegetation
- Emergent Vegetation

Other

- Logs, in Water Cover
- Rocks
- Bass Bed/Nest

Fish Survey Locations

- Fyke Nets
- Gill Nets
- Minnow Traps
- Seine Net
- Electrofishing Transect
- LOMU Fish Sampling Stations – 2009
- Mussel Survey - Sept 2011

Notes

- Coordinate System: UTM NAD 83 - Zone 18 (N).
- Base features produced under license with the Ontario Ministry of Natural Resources © Queen's Printer for Ontario, 2012.



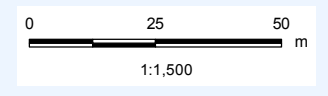
Stantec

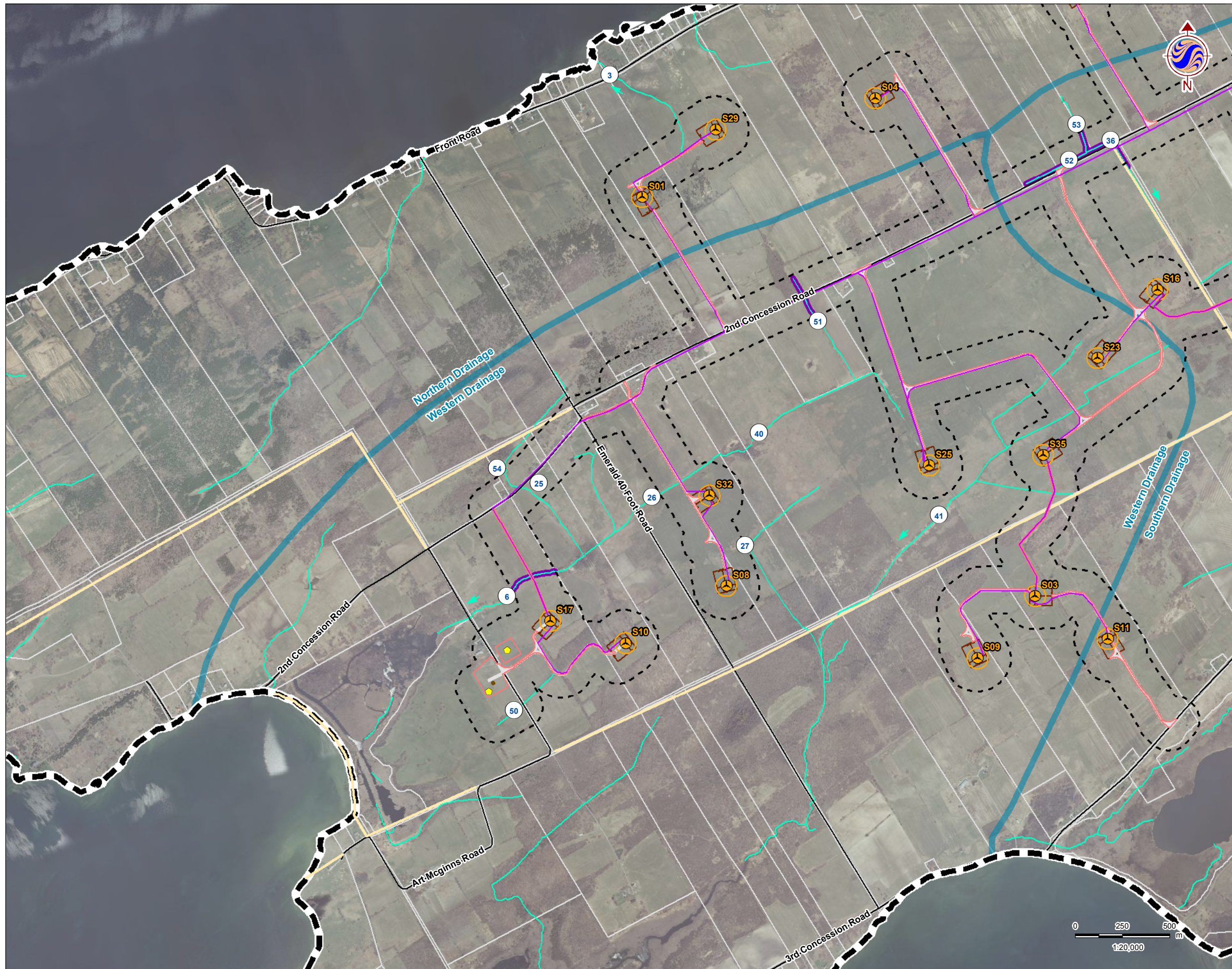
April, 2013
160960595

Client/Project
WINDLECTRIC INC.
AMHERST ISLAND WIND ENERGY PROJECT

Figure No.
4 (4 of 4)

Title
Substrate and Bathymetry at Dock and Cable Landing Sites
Mainland Dock – East Option





Legend

- Study Area
- 120m Zone of Investigation
- Project Components**
- Turbine
- Met Tower (Potential Location)
- Access Road
- Collector Lines
- Laydown Area and Crane Path
- Submarine Cable Path
- Operation and Maintenance Building (Potential Location)
- Storage Shed
- Turbine Blade Tips
- Substation (Potential Location)
- Potential Culvert Location
- Point of Common Coupling
- Mainland Cable Vault (Potential Location)
- Island Cable Vault
- Aboveground Storage Tanks (Potential Location)
- Constructible Area
- Mainland Dock (Potential Location)
- Island Dock
- Batch Plant (Potential Location)
- Site Office (Potential Location)
- Transmission Lines**
- Mainland Option 1
- Mainland Option 2
- Island Transmission Line
- Land Use**
- Central Staging Area
- Switching Station (Potential Location)
- Existing Features**
- Road
- Unopened Road Allowance
- Railway
- Watercourse (modified by Stantec)
- Direction of Flow
- Property Line
- Drainage Area
- Fish Habitat
- Water Assessment Station Number

Notes

1. Coordinate System: UTM NAD 83 - Zone 18 (N).
2. Base features produced under license with the Ontario Ministry of Natural Resources © Queen's Printer for Ontario, 2013. Project layout S19 - revision 3.
3. Imagery Source: First Base Solutions ©, 2013. Imagery Date: 2008



Stantec

November 2013
160960595

Client/Project

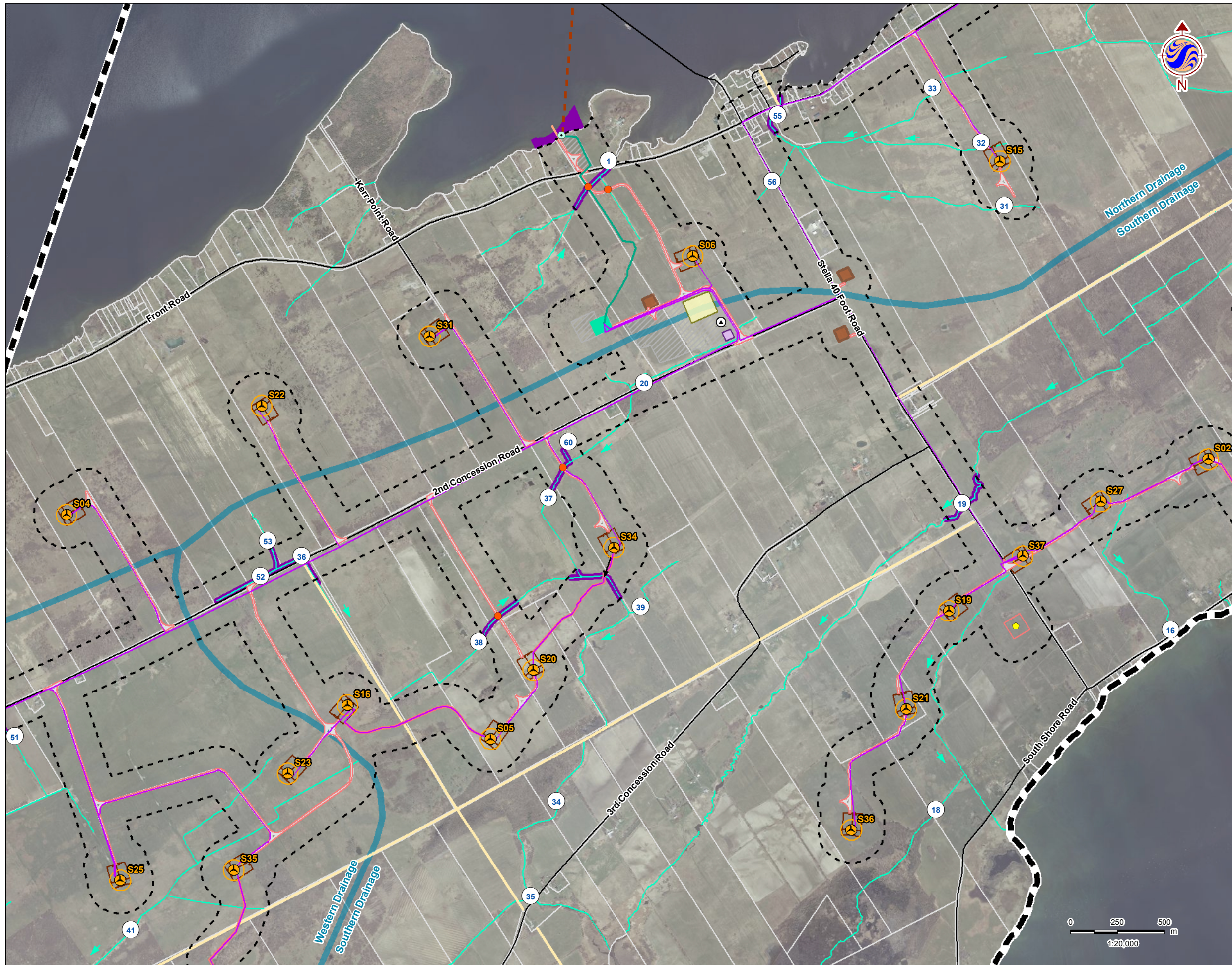
WINDLECTRIC INC.
AMHERST ISLAND WIND ENERGY PROJECT

Figure No.

5 (1 of 4)

Title

Fish Habitat in the Zone of Investigation



Legend

- Study Area
- 120m Zone of Investigation
- Project Components**
- Turbine
- Met Tower (Potential Location)
- Access Road
- Collector Lines
- Laydown Area and Crane Path
- Submarine Cable Path
- Operation and Maintenance Building (Potential Location)
- Storage Shed
- Turbine Blade Tips
- Substation (Potential Location)
- Potential Culvert Location
- Point of Common Coupling
- Mainland Cable Vault (Potential Location)
- Island Cable Vault
- Aboveground Storage Tanks (Potential Location)
- Constructible Area
- Mainland Dock (Potential Location)
- Island Dock
- Batch Plant (Potential Location)
- Site Office (Potential Location)
- Transmission Lines**
- Mainland Option 1
- Mainland Option 2
- Island Transmission Line
- Land Use**
- Central Staging Area
- Switching Station (Potential Location)
- Existing Features**
- Road
- Unopened Road Allowance
- Railway
- Watercourse (modified by Stantec)
- Direction of Flow
- Property Line
- Drainage Area
- Fish Habitat
- Water Assessment Station Number

Notes

1. Coordinate System: UTM NAD 83 - Zone 18 (N).
2. Base features produced under license with the Ontario Ministry of Natural Resources © Queen's Printer for Ontario, 2013. Project layout S19 - revision 3.
3. Imagery Source: First Base Solutions ©, 2013. Imagery Date: 2008



Stantec

November 2013
160960595

Client/Project
WINDLECTRIC INC.
AMHERST ISLAND WIND ENERGY PROJECT

Figure No.
5 (2 of 4)

Title
Fish Habitat in the Zone of Investigation



Legend

- Study Area
- 120m Zone of Investigation
- Project Components**
- Turbine
- Met Tower (Potential Location)
- Access Road
- Collector Lines
- Laydown Area and Crane Path
- Submarine Cable Path
- Operation and Maintenance Building (Potential Location)
- Storage Shed
- Turbine Blade Tips
- Substation (Potential Location)
- Potential Culvert Location
- Point of Common Coupling
- Mainland Cable Vault (Potential Location)
- Island Cable Vault
- Aboveground Storage Tanks (Potential Location)
- Constructible Area
- Mainland Dock (Potential Location)
- Island Dock
- Batch Plant (Potential Location)
- Site Office (Potential Location)
- Transmission Lines**
- Mainland Option 1
- Mainland Option 2
- Island Transmission Line
- Land Use**
- Central Staging Area
- Switching Station (Potential Location)
- Existing Features**
- Road
- Unopened Road Allowance
- Railway
- Watercourse (modified by Stantec)
- Direction of Flow
- Property Line
- Drainage Area
- Fish Habitat
- Water Assessment Station Number

Notes

1. Coordinate System: UTM NAD 83 - Zone 18 (N).
2. Base features produced under license with the Ontario Ministry of Natural Resources © Queen's Printer for Ontario, 2013. Project layout S19 - revision 3.
3. Imagery Source: First Base Solutions ©, 2013. Imagery Date: 2008



Stantec

November 2013
160960595

Client/Project

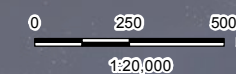
WINDLECTRIC INC.
AMHERST ISLAND WIND ENERGY PROJECT

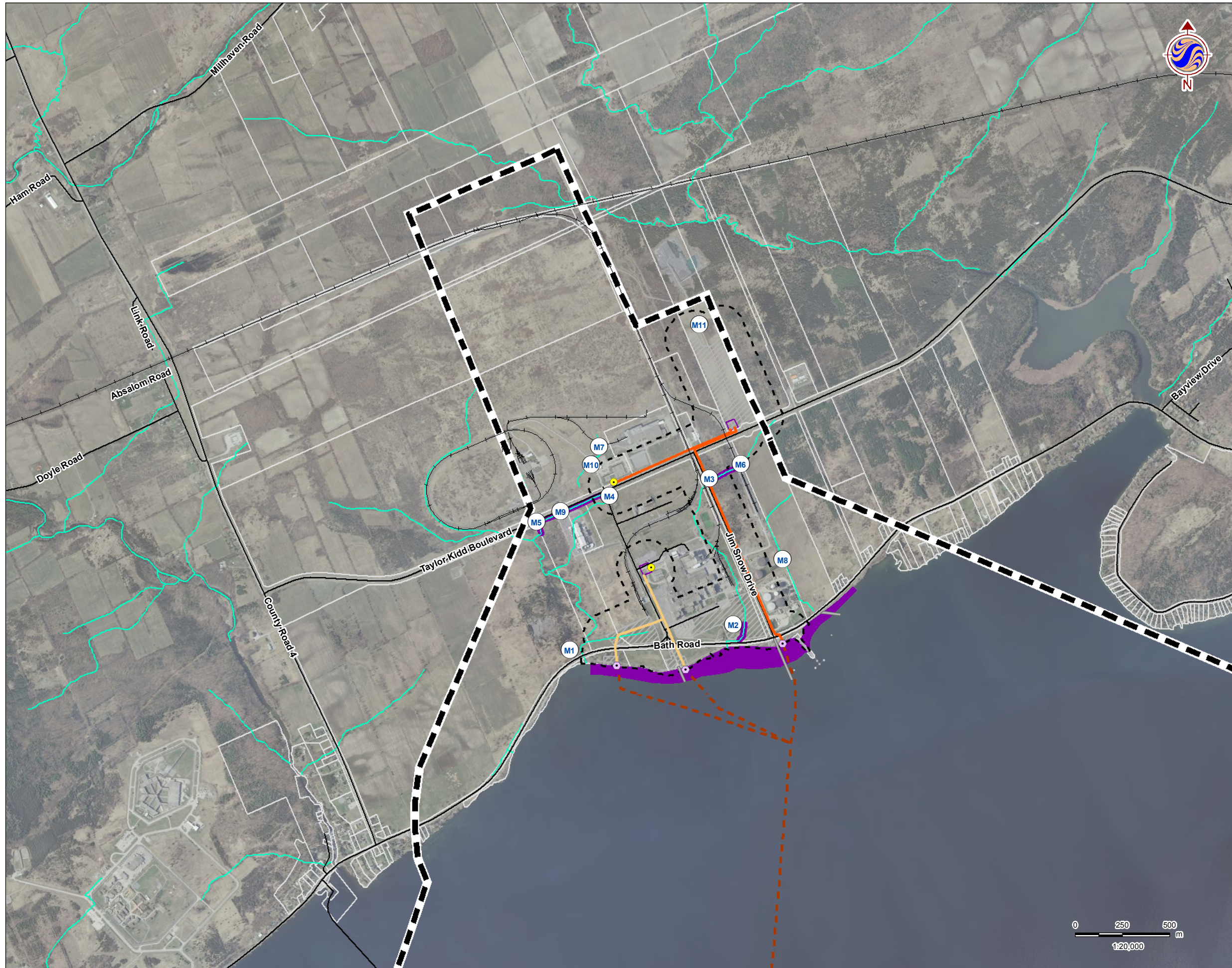
Figure No.

5 (3 of 4)

Title

Fish Habitat in the Zone of Investigation





Legend

- Study Area
- 120m Zone of Investigation
- Project Components**
- Turbine
- Met Tower (Potential Location)
- Access Road
- Collector Lines
- Laydown Area and Crane Path
- Submarine Cable Path
- Operation and Maintenance Building (Potential Location)
- Storage Shed
- Turbine Blade Tips
- Substation (Potential Location)
- Potential Culvert Location
- Point of Common Coupling
- Mainland Cable Vault (Potential Location)
- Island Cable Vault
- Aboveground Storage Tanks (Potential Location)
- Constructible Area
- Mainland Dock (Potential Location)
- Island Dock
- Batch Plant (Potential Location)
- Site Office (Potential Location)
- Transmission Lines**
- Mainland Option 1
- Mainland Option 2
- Island Transmission Line
- Land Use**
- Central Staging Area
- Switching Station (Potential Location)
- Existing Features**
- Road
- Unopened Road Allowance
- Railway
- Watercourse (modified by Stantec)
- Direction of Flow
- Property Line
- Drainage Area
- Fish Habitat
- ① Water Assessment Station Number

Notes

1. Coordinate System: UTM NAD 83 - Zone 18 (N).
2. Base features produced under license with the Ontario Ministry of Natural Resources © Queen's Printer for Ontario, 2013. Project layout S19 - revision 3.
3. Imagery Source: First Base Solutions ©, 2013. Imagery Date: 2008



Stantec

November 2013
160960595

Client/Project

WINDLECTRIC INC.
AMHERST ISLAND WIND ENERGY PROJECT

Figure No.

5 (4 of 4)

Title

Fish Habitat in the Zone of Investigation

