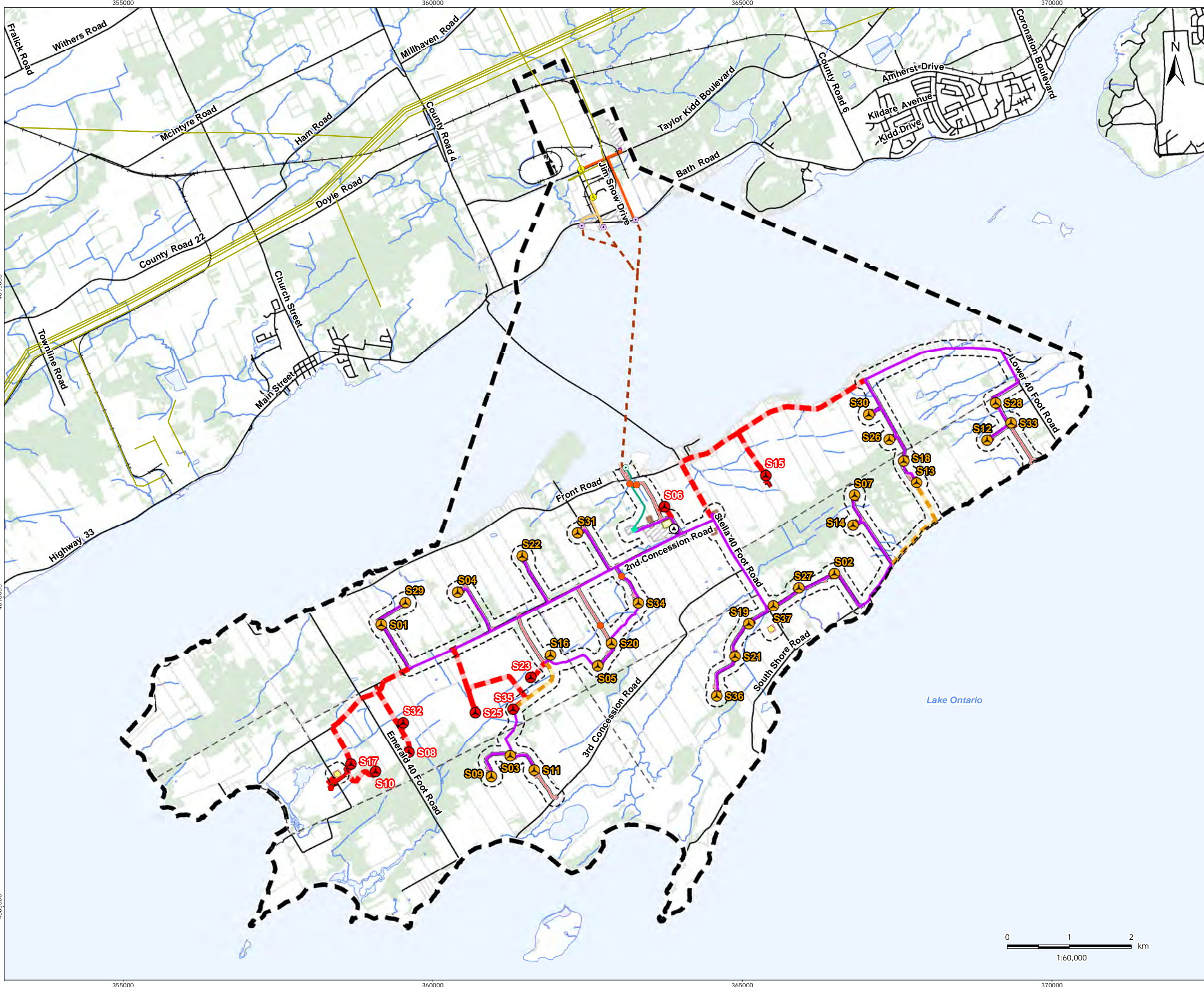


**Appendix A:**  
**Figures**



- Legend**
- Study Area
  - 120m Zone of Investigation
  - Project Components**
  - Turbine (No Changes Proposed)
  - Turbine (Removed)
  - Met Tower - Potential Location (No Changes Proposed)
  - Met Tower - Potential Location (Removed)
  - Access Road (No Changes Proposed)
  - Access Road (Removed)
  - Collector Line (No Changes Proposed)
  - Collector Line (New)
  - Collector Line (Removed)
  - Submarine Cable Path
  - Laydown Area and Crane Pad (No Changes Proposed)
  - Laydown Area and Crane Pad (Removed)
  - Operation and Maintenance Building (Potential Location)
  - Turbine Blade Tip (No Changes Proposed)
  - Turbine Blade Tip (Removed)
  - Substation (Potential Location)
  - Potential Culvert Location
  - Point of Common Coupling
  - Mainland Cable Vault (Potential Location)
  - Island Cable Vault
  - Aboveground Storage Tanks (Potential Location)
  - Constructible Area (No Proposed Changes)
  - Constructible Area (Removed)
  - Mainland Dock (Potential Location)
  - Island Dock
  - Batch Plant (Potential Location)
  - Site Office (Potential Location)
  - Storage Shed
  - Transmission Lines**
  - Mainland Option 1
  - Mainland Option 2
  - Island Transmission Line
  - Land Use**
  - Central Staging Area
  - Switching Station (Potential Location)
  - Existing Features**
  - Road
  - Unopened Road Allowance
  - Railway
  - Hydro Line
  - Watercourse
  - Waterbody
  - Wooded Area
  - Property Line

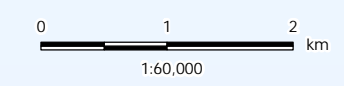
**Notes**

- Coordinate System: NAD 1983 UTM Zone 18N
- Base features produced under license with the Ontario Ministry of Natural Resources and Forestry © Queen's Printer for Ontario, 2015.

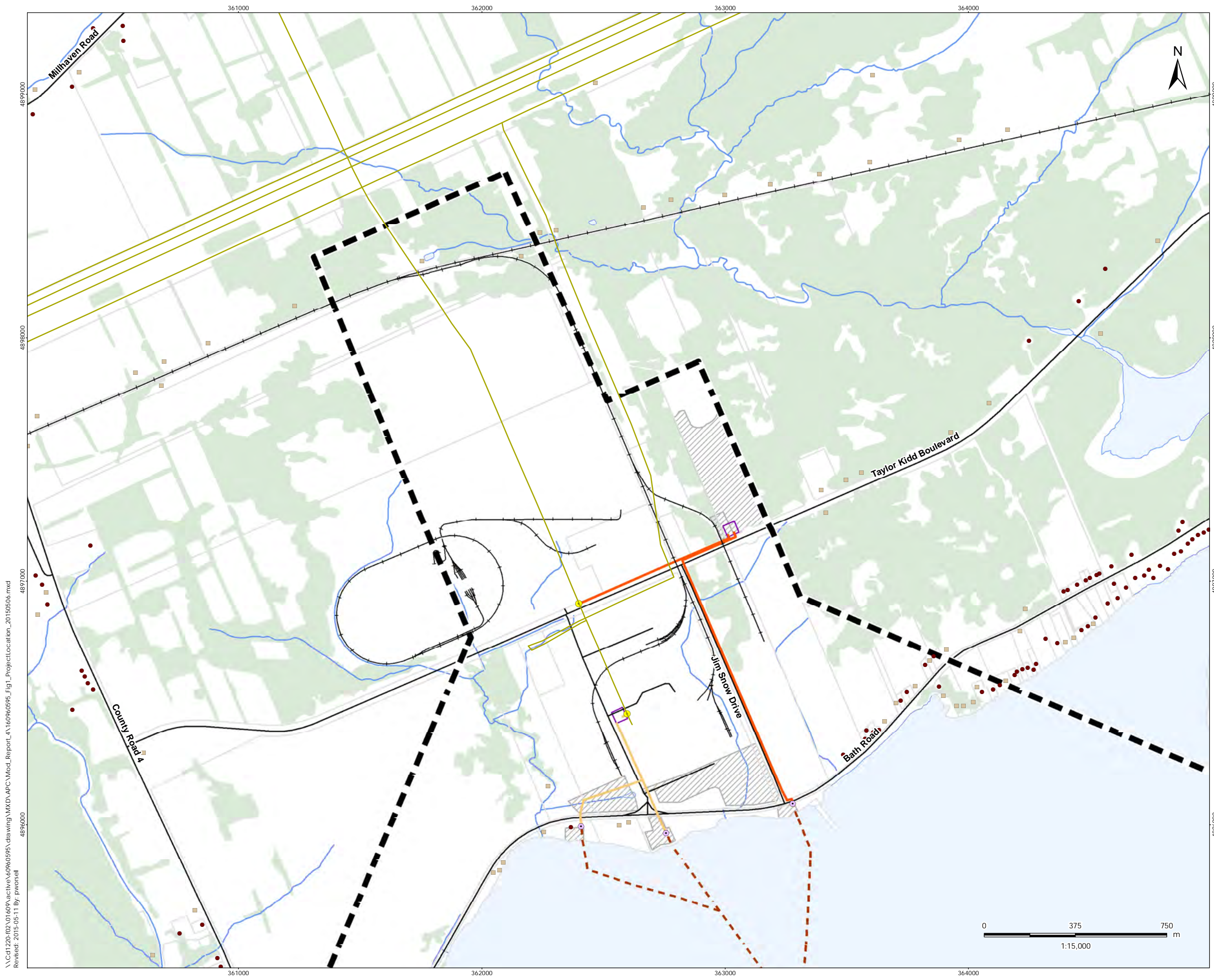
Client/Project  
 Windlectric Inc.  
 Amherst Island Wind Energy Project

Figure No.  
 1

Title  
 Project Location - Modification #4:  
 Overview



\\Cd1220-102\01609\active\60960595\drawing\MXD\APC.Mod\_Report\_A\160960595\_Fig1\_ProjectLocation\_Overview\_20150506.mxd  
 Revised: 2015-05-11 By: pwnorsell  
 4885000



- Legend**
- Study Area
  - 120m Zone of Investigation
  - Project Components**
  - Turbine (No Changes Proposed)
  - Turbine (Removed)
  - Met Tower - Potential Location (No Changes Proposed)
  - Met Tower - Potential Location (Removed)
  - Access Road (No Changes Proposed)
  - Access Road (Removed)
  - Collector Line (No Changes Proposed)
  - Collector Line (New)
  - Collector Line (Removed)
  - Submarine Cable Path
  - Laydown Area and Crane Pad (No Changes Proposed)
  - Laydown Area and Crane Pad (Removed)
  - Operation and Maintenance Building (Potential Location)
  - Turbine Blade Tip (No Changes Proposed)
  - Turbine Blade Tip (Removed)
  - Substation (Potential Location)
  - Potential Culvert Location
  - Point of Common Coupling
  - Mainland Cable Vault (Potential Location)
  - Island Cable Vault
  - Aboveground Storage Tanks (Potential Location)
  - Constructible Area (No Proposed Changes)
  - Constructible Area (Removed)
  - Mainland Dock (Potential Location)
  - Island Dock
  - Batch Plant (Potential Location)
  - Site Office (Potential Location)
  - Storage Shed
  - Transmission Lines**
  - Mainland Option 1
  - Mainland Option 2
  - Island Transmission Line
  - Land Use**
  - Central Staging Area
  - Switching Station (Potential Location)
  - Noise Receptors**
  - Existing
  - Vacant
  - Existing Features**
  - Road
  - Unopened Road Allowance
  - Railway
  - Hydro Line
  - Watercourse
  - Waterbody
  - Wooded Area
  - Property Line

**Notes**

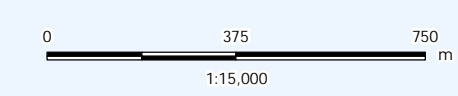
- Coordinate System: NAD 1983 UTM Zone 18N
- Base features produced under license with the Ontario Ministry of Natural Resources and Forestry © Queen's Printer for Ontario, 2015.

Client/Project

Windlectric Inc.  
Amherst Island Wind Energy Project

Figure No.  
1.1

Title  
Project Location - Modification #4



\\Cd1220-102\01609\active\60960595\drawing\MXD\APC\_Mod\_Report\_A\160960595\_Fig1\_ProjectLocation\_20150506.mxd  
 Revised: 2015-05-11 By: pworsell

361000 362000 363000 364000 365000

4894000  
4893000  
4892000  
4891000



Legend

- Study Area
- 120m Zone of Investigation
- Project Components
  - Turbine (No Changes Proposed)
  - Turbine (Removed)
  - Met Tower - Potential Location (No Changes Proposed)
  - Met Tower - Potential Location (Removed)
  - Access Road (No Changes Proposed)
  - Access Road (Removed)
  - Collector Line (No Changes Proposed)
  - Collector Line (New)
  - Collector Line (Removed)
  - Submarine Cable Path
  - Laydown Area and Crane Pad (No Changes Proposed)
  - Laydown Area and Crane Pad (Removed)
  - Operation and Maintenance Building (Potential Location)
  - Turbine Blade Tip (No Changes Proposed)
  - Turbine Blade Tip (Removed)
  - Substation (Potential Location)
  - Potential Culvert Location
  - Point of Common Coupling
  - Mainland Cable Vault (Potential Location)
  - Island Cable Vault
  - Aboveground Storage Tanks (Potential Location)
  - Constructible Area (No Proposed Changes)
  - Constructible Area (Removed)
  - Mainland Dock (Potential Location)
  - Island Dock
  - Batch Plant (Potential Location)
  - Site Office (Potential Location)
  - Storage Shed
- Transmission Lines
  - Mainland Option 1
  - Mainland Option 2
  - Island Transmission Line
- Land Use
  - Central Staging Area
  - Switching Station (Potential Location)
- Noise Receptors
  - Existing
  - Vacant
- Existing Features
  - Road
  - Unopened Road Allowance
  - Railway
  - Hydro Line
  - Watercourse
  - Waterbody
  - Wooded Area
  - Property Line

Notes

- Coordinate System: NAD 1983 UTM Zone 18N
- Base features produced under license with the Ontario Ministry of Natural Resources and Forestry © Queen's Printer for Ontario, 2015.

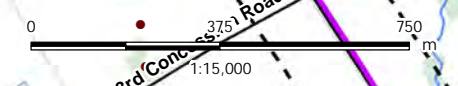
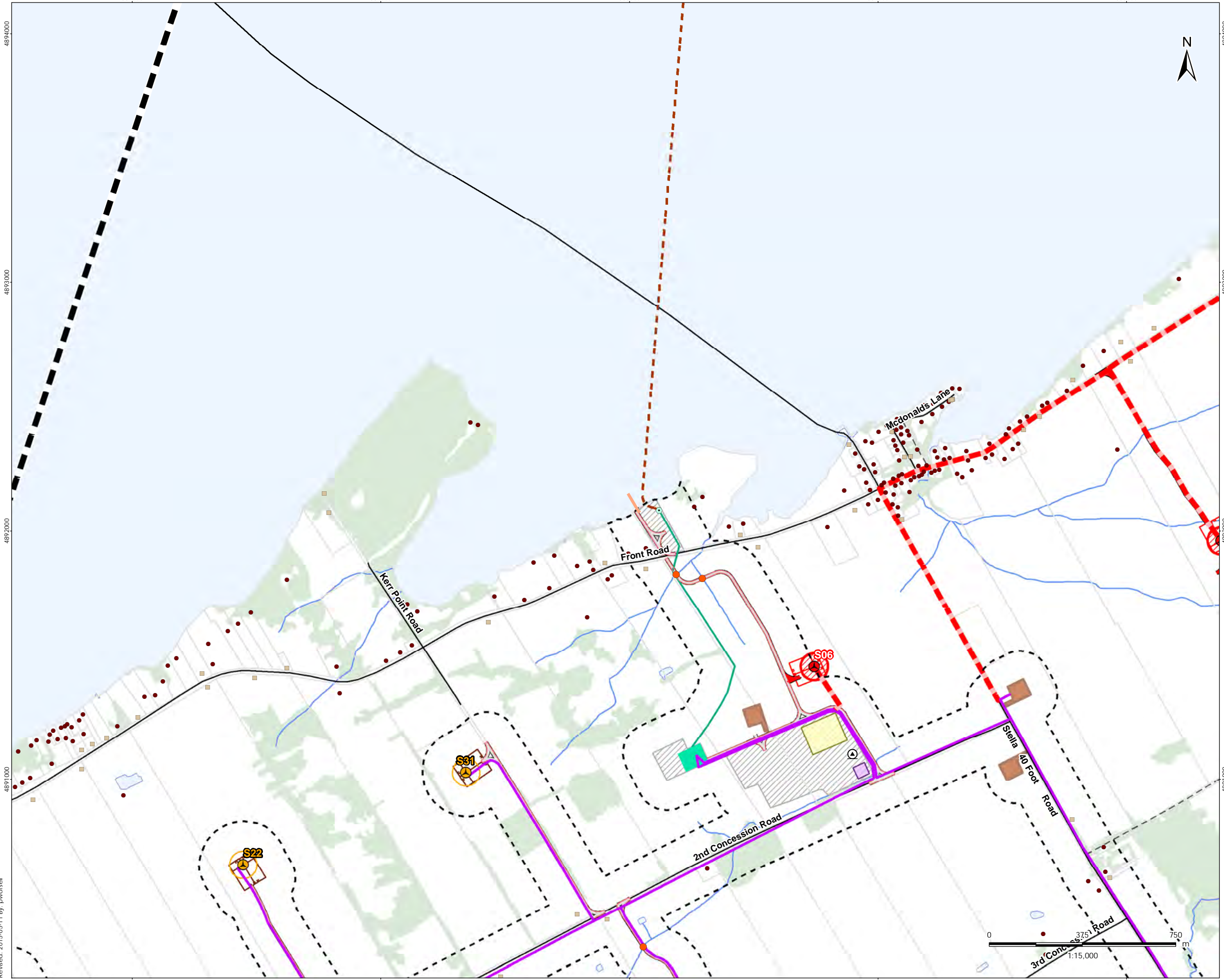
May 2015  
160960595

Client/Project  
Windlectric Inc.  
Amherst Island Wind Energy Project

Figure No.  
1.2

Title  
Project Location - Modification #4

\\C01220-102\01609\active\60960595\drawing\MXD\APC\Mod\_Report\_A\160960595\_Fig1\_ProjectLocation\_20150506.mxd  
Revised: 2015-05-11 By: pworsell



361000 362000 363000 364000 365000

366000 367000 368000 369000 370000



Legend

- Study Area
- 120m Zone of Investigation
- Project Components
  - Turbine (No Changes Proposed)
  - Turbine (Removed)
  - Met Tower - Potential Location (No Changes Proposed)
  - Met Tower - Potential Location (Removed)
  - Access Road (No Changes Proposed)
  - Access Road (Removed)
  - Collector Line (No Changes Proposed)
  - Collector Line (New)
  - Collector Line (Removed)
  - Submarine Cable Path
  - Laydown Area and Crane Pad (No Changes Proposed)
  - Laydown Area and Crane Pad (Removed)
  - Operation and Maintenance Building (Potential Location)
  - Turbine Blade Tip (No Changes Proposed)
  - Turbine Blade Tip (Removed)
  - Substation (Potential Location)
  - Potential Culvert Location
  - Point of Common Coupling
  - Mainland Cable Vault (Potential Location)
  - Island Cable Vault
  - Aboveground Storage Tanks (Potential Location)
  - Constructible Area (No Proposed Changes)
  - Constructible Area (Removed)
  - Mainland Dock (Potential Location)
  - Island Dock
  - Batch Plant (Potential Location)
  - Site Office (Potential Location)
  - Storage Shed
- Transmission Lines
  - Mainland Option 1
  - Mainland Option 2
  - Island Transmission Line
- Land Use
  - Central Staging Area
  - Switching Station (Potential Location)
- Noise Receptors
  - Existing
  - Vacant
- Existing Features
  - Road
  - Unopened Road Allowance
  - Railway
  - Hydro Line
  - Watercourse
  - Waterbody
  - Wooded Area
  - Property Line

Notes

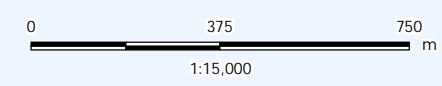
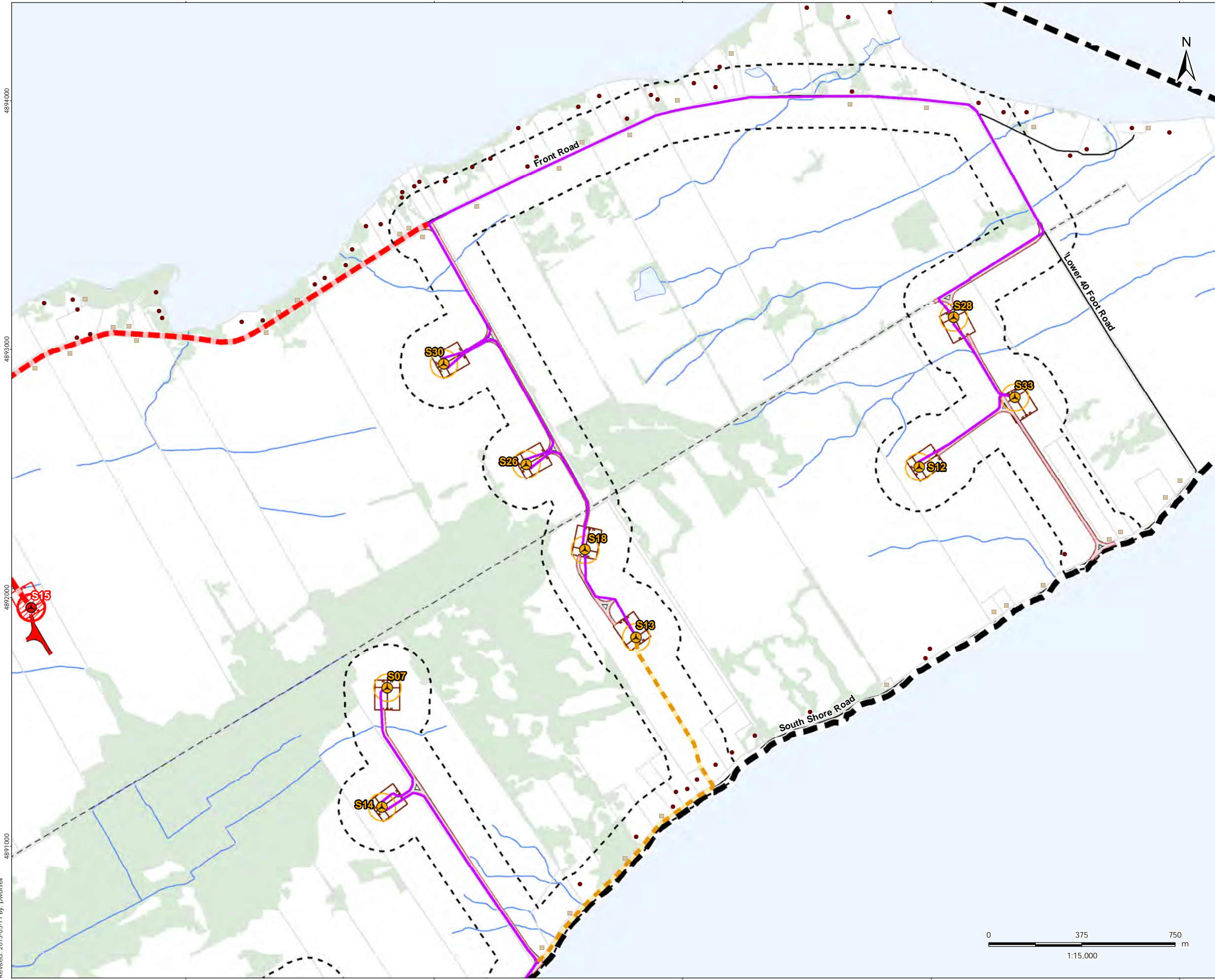
- Coordinate System: NAD 1983 UTM Zone 18N
- Base features produced under license with the Ontario Ministry of Natural Resources and Forestry © Queen's Printer for Ontario, 2015.

May 2015  
160960595

Client/Project  
Windlectric Inc.  
Amherst Island Wind Energy Project

Figure No.  
1.3

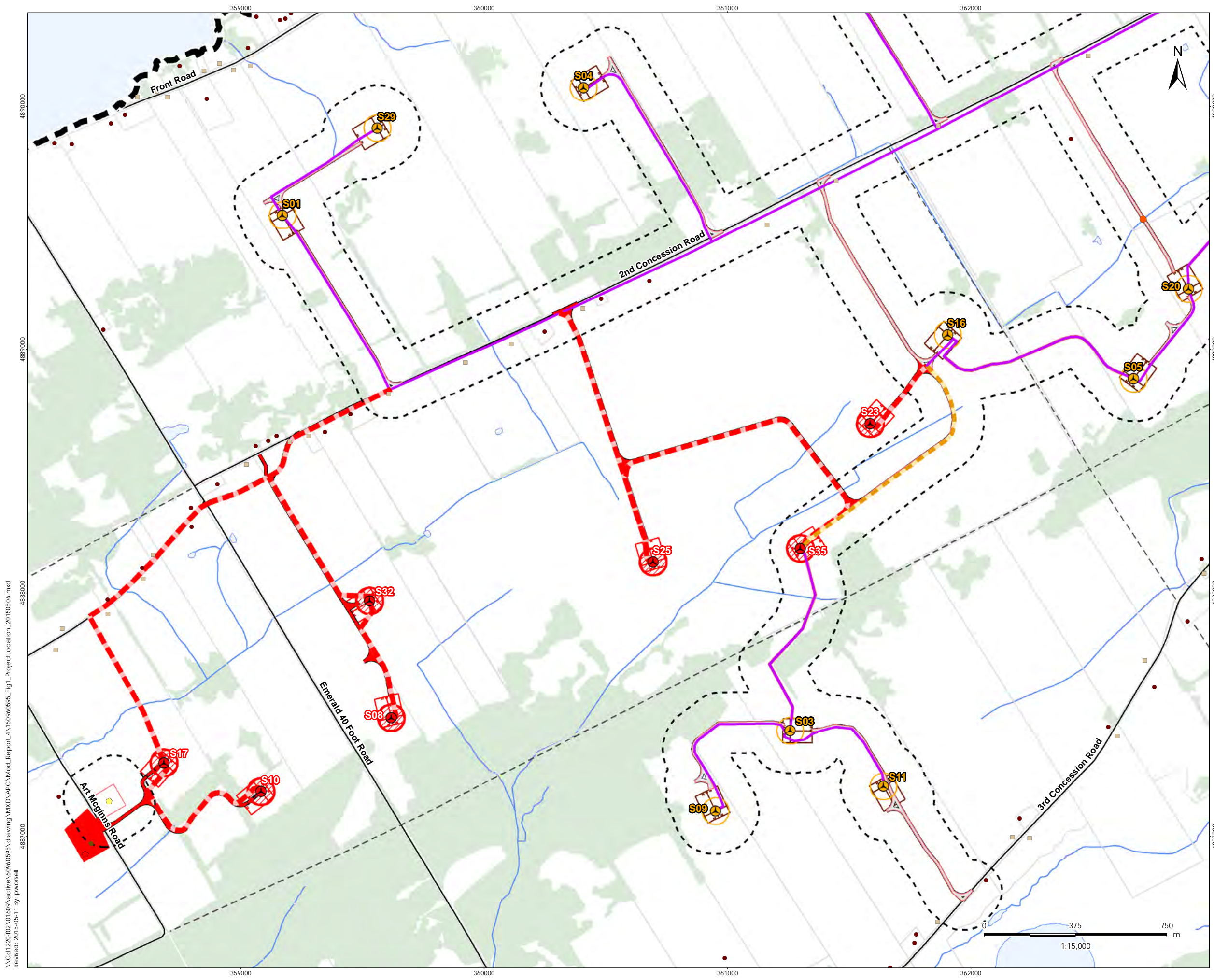
Title  
Project Location - Modification #4



\\Cd1220-102\01609\active\60960595\drawing\MXD\APC\Mod\_Report\_A\160960595\_Fig1\_ProjectLocation\_20150506.mxd  
 Revised: 2015-05-11 By: pworsell

366000 367000 368000 369000 370000

4891000 4892000 4893000 4894000



- Legend**
- Study Area
  - 120m Zone of Investigation
  - Project Components**
    - Turbine (No Changes Proposed)
    - Turbine (Removed)
    - Met Tower - Potential Location (No Changes Proposed)
    - Met Tower - Potential Location (Removed)
    - Access Road (No Changes Proposed)
    - Access Road (Removed)
    - Collector Line (No Changes Proposed)
    - Collector Line (New)
    - Collector Line (Removed)
    - Submarine Cable Path
    - Laydown Area and Crane Pad (No Changes Proposed)
    - Laydown Area and Crane Pad (Removed)
    - Operation and Maintenance Building (Potential Location)
    - Turbine Blade Tip (No Changes Proposed)
    - Turbine Blade Tip (Removed)
    - Substation (Potential Location)
    - Potential Culvert Location
    - Point of Common Coupling
    - Mainland Cable Vault (Potential Location)
    - Island Cable Vault
    - Aboveground Storage Tanks (Potential Location)
    - Constructible Area (No Proposed Changes)
    - Constructible Area (Removed)
    - Mainland Dock (Potential Location)
    - Island Dock
    - Batch Plant (Potential Location)
    - Site Office (Potential Location)
    - Storage Shed
  - Transmission Lines**
    - Mainland Option1
    - Mainland Option 2
    - Island Transmission Line
  - Land Use**
    - Central Staging Area
    - Switching Station (Potential Location)
  - Noise Receptors**
    - Existing
    - Vacant
  - Existing Features**
    - Road
    - Unopened Road Allowance
    - Railway
    - Hydro Line
    - Watercourse
    - Waterbody
    - Wooded Area
    - Property Line

**Notes**

- Coordinate System: NAD 1983 UTM Zone 18N
- Base features produced under license with the Ontario Ministry of Natural Resources and Forestry © Queen's Printer for Ontario, 2015.

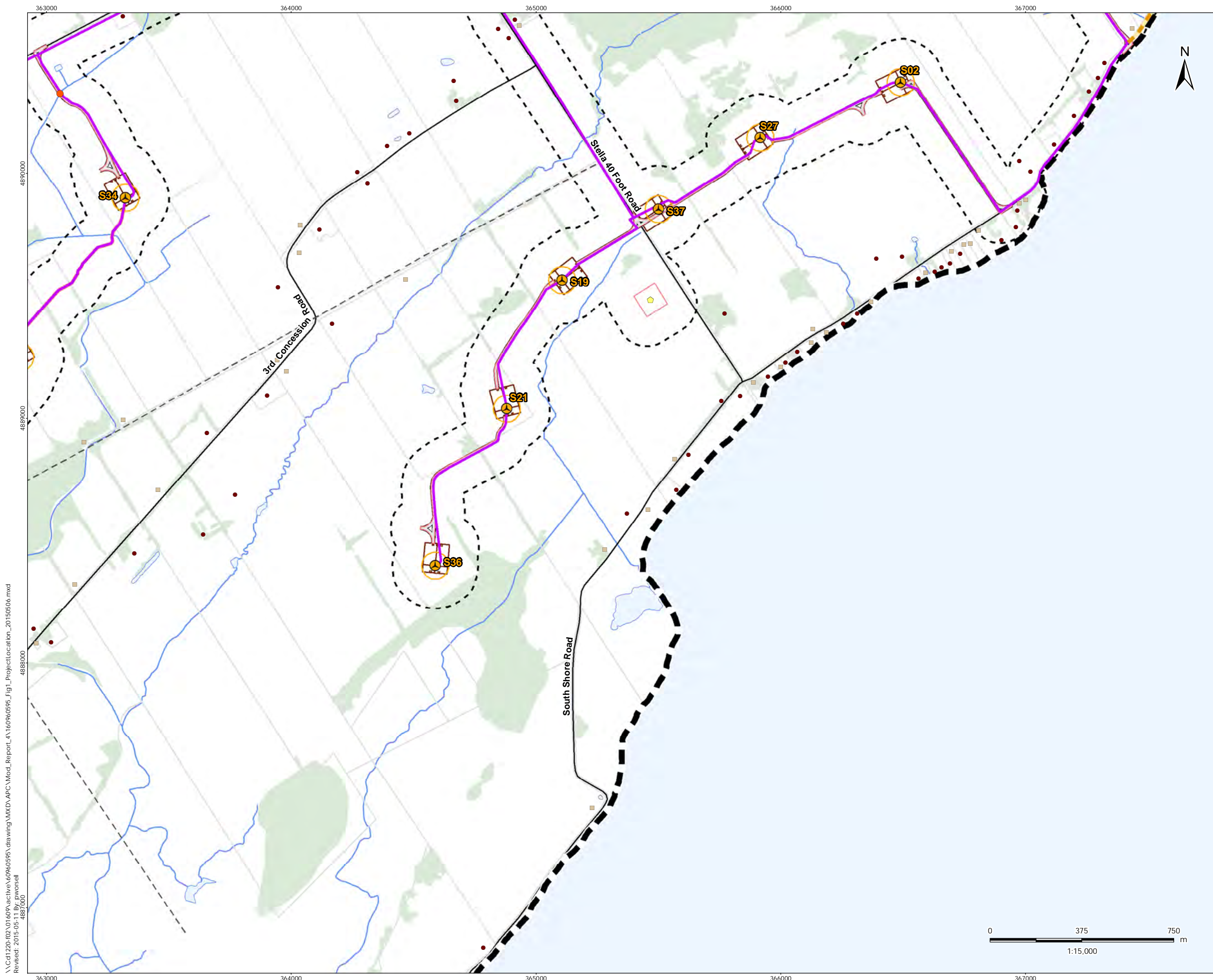
Client/Project  
 Windlectric Inc.  
 Amherst Island Wind Energy Project

Figure No.  
 1.4

Title  
 Project Location - Modification #4

\\C01220-102\01609\active\60960595\drawing\MXD\APC\_Mod\_Report\_A\160960595\_Fig1\_ProjectLocation\_20150506.mxd  
 Revised: 2015-05-11 By: pworsell

May 2015  
 160960595



- Legend**
- Study Area
  - 120m Zone of Investigation
  - Project Components**
    - Turbine (No Changes Proposed)
    - Turbine (Removed)
    - Met Tower - Potential Location (No Changes Proposed)
    - Met Tower - Potential Location (Removed)
    - Access Road (No Changes Proposed)
    - Access Road (Removed)
    - Collector Line (No Changes Proposed)
    - Collector Line (New)
    - Collector Line (Removed)
    - Submarine Cable Path
    - Laydown Area and Crane Pad (No Changes Proposed)
    - Laydown Area and Crane Pad (Removed)
    - Operation and Maintenance Building (Potential Location)
    - Turbine Blade Tip (No Changes Proposed)
    - Turbine Blade Tip (Removed)
    - Substation (Potential Location)
    - Potential Culvert Location
    - Point of Common Coupling
    - Mainland Cable Vault (Potential Location)
    - Island Cable Vault
    - Aboveground Storage Tanks (Potential Location)
    - Constructible Area (No Proposed Changes)
    - Constructible Area (Removed)
    - Mainland Dock (Potential Location)
    - Island Dock
    - Batch Plant (Potential Location)
    - Site Office (Potential Location)
    - Storage Shed
  - Transmission Lines**
    - Mainland Option 1
    - Mainland Option 2
    - Island Transmission Line
  - Land Use**
    - Central Staging Area
    - Switching Station (Potential Location)
  - Noise Receptors**
    - Existing
    - Vacant
  - Existing Features**
    - Road
    - Unopened Road Allowance
    - Railway
    - Hydro Line
    - Watercourse
    - Waterbody
    - Wooded Area
    - Property Line

**Notes**

- Coordinate System: NAD 1983 UTM Zone 18N
- Base features produced under license with the Ontario Ministry of Natural Resources and Forestry © Queen's Printer for Ontario, 2015.

May 2015  
160960595

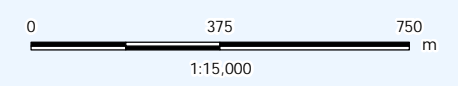
Client/Project  
Windlectric Inc.  
Amherst Island Wind Energy Project

---

Figure No.  
1.5

---

Title  
Project Location - Modification #4



\\Cd1220-102\01609\active\6960595\drawing\MXD\APC\_Mod\_Report\_A\160960595\_Fig1\_ProjectLocation\_20150506.mxd  
 Revised: 2015-05-11 By: pwnorsell  
 4887000