



**AMHERST ISLAND WIND ENERGY
PROJECT**
REVISED DRAFT SITE PLAN
REPORT

File No. 160960595
August 2012

Prepared for:

Windlelectric Inc.
2845 Bristol Circle,
Oakville, ON L6H 7H7

Prepared by:

Stantec Consulting Ltd.
Suite 1 - 70 Southgate Drive
Guelph ON N1G 4P5

Executive Summary

Windlectric Inc. (Windlectric) is proposing to develop, construct, and operate the 56 - 75 megawatt (MW) Amherst Island Wind Energy Project (the Project) within Loyalist Township in the County of Lennox and Addington in eastern Ontario, in response to the Government of Ontario's initiative to promote the development of renewable electricity in the province.

The Project Study Area includes Amherst Island, an approximately 3 - 15 kilometre wide corridor stretching between the Island and the mainland where the submarine cable is proposed. The mainland portion of the Project Study Area stretches from the mainland shoreline, north to the Invista Transformer Station and is generally bounded by i) County Road 4 to the West; ii) the Canadian National Railway line to the North; and iii) approximately 500 m East of Jim Snow Drive to the East. The proposed Project Study Area is shown in **Appendix A**.

The basic components of the Project include approximately 31 - 37 wind turbine generators (depending on the turbine manufacturer and model selected) with a total installed nameplate capacity of approximately 56 - 75 MW, a 34.5 kilovolt (kV) underground and/or overhead electrical power line collector system, fibre optic data lines from each turbine and/or wireless technology for the communication of data, a submarine cable, an operations and maintenance building, a substation, a switching station, meteorological tower(s) (met tower(s)), access road(s) to the met tower site(s), as well as access roads to turbine components and infrastructure with culvert locations, as required, at associated watercourse crossings.

Temporary components during construction may include a temporary dock, storage and staging areas at the turbine locations, crane pads or mats, staging areas along access roads, delivery truck turnaround areas, central laydown areas, crane paths and associated watercourse crossings. The electrical power line collector system would transport the electricity generated from each turbine to the substation, along the submarine cable to the mainland and then to a switching station located near to an existing Hydro One Networks Inc. 115 kV transmission line.

Windlectric has retained Stantec Consulting Ltd. (Stantec) to prepare the Renewable Energy Approval (REA) application, as required under O. Reg. 359/09. According to subsection 6.(3) of O. Reg. 359/09, the Project is classified as a Class 4 Wind Facility.

This Draft Site Plan Report has been prepared in accordance with section 54.1 of Ontario Regulation 359/09, and the Ministry of the Environment's (MOE) "Technical Guide to Renewable Energy Approvals" (MOE 2011). This Draft Site Plan Report has been prepared to crystalize the proposed Project and includes;

- A draft site plan (**Appendix A**);
- UTM coordinates for the proposed Project's turbines (Section 2); and,
- UTM coordinates of receptors within 2 km of the turbine locations (**Appendix B**).

Table of Contents

1.0	INTRODUCTION	1.1
1.1	PROJECT OVERVIEW	1.1
1.2	PROJECT LOCATION	1.1
1.3	NAMEPLATE CAPACITY OF THE PROJECT.....	1.2
1.4	ENERGY SOURCES.....	1.2
1.5	CONTACTS.....	1.2

2.0	SITE PLAN	2.1
2.1	PURPOSE.....	2.1
2.2	TURBINE LOCATIONS	2.1
2.3	PROJECT COMPONENTS	2.2
	2.3.1 Wind Turbine Generators	2.2
	2.3.2 Electrical Interconnection	2.3
	2.3.3 Access Roads	2.3
	2.3.4 Operation and Maintenance Building.....	2.4
	2.3.5 Substation.....	2.4
	2.3.6 Switching Station.....	2.4
	2.3.7 Met Tower	2.4
2.4	TEMPORARY COMPONENTS	2.4

3.0	CLOSURE	3.1
------------	----------------------	------------

4.0	REFERENCES	4.1
------------	-------------------------	------------

List of Tables

Table 1.1: Geographical Coordinates of Project Boundary	1.2
Table 2.1: Turbine Coordinates	2.2

List of Appendices

Appendix A Revised Draft Site Plan
Appendix B UTM Coordinates of Noise Receptors

1.0 Introduction

1.1 PROJECT OVERVIEW

Windlectric Inc. (Windlectric) is proposing to develop, construct, and operate the 56 - 75 megawatt (MW) Amherst Island Wind Energy Project (the Project) within Loyalist Township in the County of Lennox and Addington in eastern Ontario, in response to the Government of Ontario's initiative to promote the development of renewable electricity in the province.

The Project Study Area includes Amherst Island, an approximately 3 - 15 kilometre wide corridor stretching between the Island and the mainland where the submarine cable is proposed. The mainland portion of the Project Study Area stretches from the mainland shoreline, north to the Invista Transformer Station and is generally bounded by i) County Road 4 to the West; ii) the Canadian National Railway line to the North; and iii) approximately 500 m East of Jim Snow Drive to the East. The proposed Project Study Area is shown in **Appendix A**.

The basic components of the Project include approximately 31 - 37 wind turbine generators (depending on the turbine manufacturer and model selected) with a total installed nameplate capacity of approximately 56 - 75 MW, a 34.5 kilovolt (kV) underground and/or overhead electrical power line collector system, fibre optic data lines from each turbine and/or wireless technology for the communication of data, a submarine cable, an operations and maintenance building, a substation, a switching station, meteorological tower(s) (met tower(s)), access road(s) to the met tower site(s), as well as access roads to turbine components and infrastructure with culvert locations, as required, at associated watercourse crossings. Temporary components during construction may include a temporary dock, storage and staging areas at the turbine locations, crane pads or mats, staging areas along access roads, delivery truck turnaround areas, central laydown areas, crane paths and associated watercourse crossings. The electrical power line collector system would transport the electricity generated from each turbine to the substation, along the submarine cable to the mainland and then to a switching station located near to an existing Hydro One Networks Inc. 115 kV transmission line.

Windlectric has retained Stantec Consulting Ltd. (Stantec) to prepare the Renewable Energy Approval (REA) application, as required under O. Reg. 359/09. According to subsection 6.(3) of O. Reg. 359/09, the Project is classified as a Class 4 Wind Facility.

1.2 PROJECT LOCATION

The Project will be located on privately owned lands on Amherst Island and on a portion of land located on the mainland, with the exception of the submarine cable.

The Project will be entirely located within Loyalist Township in the County of Lennox and Addington in eastern Ontario. A map showing the location of the project is provided in **Appendix A**.

The geographical coordinates of the extreme points of the Project Study Area boundary, in which the Project Location is contained, are listed in the table below.

Table 1.1: Geographical Coordinates of Project Boundary

Geographic Reference	UTM Easting	UTM Northing
Northwest Point	361300	4898337
Northeast Point	362074	4898684
Southwest Point	357075	4884769
Southeast Point	370603	4893180

In accordance with O. Reg. 359/09, the Project Location includes all land and buildings/structures associated with the Project and any air space in which the Project will occupy. This includes structures such as turbines, access roads and power lines as well as any temporary work areas (the 'constructable area' for the Project) which are required to be utilized during the construction of the Project.

1.3 NAMEPLATE CAPACITY OF THE PROJECT

The Project will consist of 56 - 75 MW (nameplate capacity) of wind power. This will be achieved via the utilization of 31 - 37 wind turbines, and the creation of a submarine cable which will connect the Project to the provincial grid.

1.4 ENERGY SOURCES

The Amherst Island Wind Energy Project will utilize the wind as the source of energy for the Project. No supplementary fuel sources would be used to generate electricity for the Project.

1.5 CONTACTS

The proponent for the Project is Windlectric Inc. (a subsidiary of Algonquin Power and Utilities Corp. ("APUC")). Windlectric's office and contact for the Project is:

Name: Sean Fairfield
Title: Senior Manager - Project Planning
Company: Algonquin Power Co.
Address: 2845 Bristol Circle,
Oakville, ON L6H 7H7
Tel: 905-465-4518

or,

Name: Alex Tsopelas
Title: Project Manager, Renewables
Company: Algonquin Power Co.
Address: 2845 Bristol Circle,
Oakville, ON L6H 7H7

The lead consultant for preparation of the Renewable Energy Approval (REA) application is Stantec Consulting Ltd. (“Stantec”). Stantec provides professional consulting services in planning, engineering, architecture, interior design, landscape architecture, surveying, environmental sciences, project management, and project economics for infrastructure and facilities projects. The consultant’s office and Project contact is:

Name: Rob Rowland
Title: Senior Project Manager
Company: Stantec Consulting Ltd.
Address: Suite 1 - 70 Southgate Drive
Guelph, ON N1G 4P5
Tel: 519-836-6966 ext. 550

or,

Name: Kerrie Skillen
Title: Project Manager
Company: Stantec Consulting Ltd.
Address: 3430 South Service Road, Unit 203
Burlington, ON L7N 3T9
Tel: 905-931-3923

2.0 Site Plan

2.1 PURPOSE

This Draft Site Plan Report has been prepared for the Project in accordance with section 54.1 of O. Reg. 359/09. The purpose of this report is to crystalize the Project thereby fixing the location of noise receptors. The draft site plan identifies the following information within 300 m of the Project Location:

- Buildings;
- Wind turbines;
- Access roads;
- Electrical collector system;
- Substation;
- Potential location for the operations and maintenance building;
- General potential location for the submarine cable;
- Potential laydown and storage area (island);
- Potential submarine cable landing area and temporary dock (mainland and island);
- General area in which the switching station will be located (Final location for the switching station is subject to property owner acceptance of agreement's terms and conditions)
- Municipal roads;
- Right-of-ways and easements; and
- Noise receptors within 2 km of the turbine locations.

The draft site plan for the Project is attached in **Appendix A**.

2.2 TURBINE LOCATIONS

The siting of wind turbines and associated infrastructure is an iterative process, and thus the locations of the Project's infrastructure are still considered to be in draft form until consultation is completed and the final REA application for the proposed Project is submitted. Table 2.1 identifies the turbine locations as shown in the draft site plan (**Appendix A**).

Appendix B contains the UTM coordinates of receptors within 2 km of turbine locations.

Table 2.1: Turbine Coordinates

Turbine #	UTM Easting	UTM Northing
1	359172	4889551
2	366489	4890372
3	361257	4887433
4	360408	4890076
5	362668	4888881
6	363743	4891454
7	366812	4891637
8	359618	4887487
9	360950	4887103
10	359083	4887184
11	361640	4887205
12	368951	4892526
13	367812	4891840
14	366790	4891157
15	365379	4891960
16	361904	4889060
17	358685	4887301
18	367607	4892193
19	365107	4889563
20	362894	4889249
21	364880	4889038
22	361447	4890656
23	361586	4888695
24	365557	4891607
25	360694	4888127
26	367317	4892536
27	365916	4890146
28	369090	4893127
29	359561	4889909
30	367039	4892940
31	362343	4891028
32	359529	4887967
33	369336	4892805
34	363323	4889900
35	361299	4888182
36	364588	4888397
37	365500	4889854
Substation	363269	4891095

2.3 PROJECT COMPONENTS

This section provides a general description of the anticipated major equipment and infrastructure associated with operation of the Project.

2.3.1 Wind Turbine Generators

The Project will include 31 - 37 model wind turbine generators with a total installed nameplate capacity of approximately 56 - 75 MW. The Siemens SWT 2.3-113 (manufacturer and model) is being contemplated, at this time, for the Project.

Details of the proposed turbine are provided below in Table 2.2.

Windlectric will complete the REA such that any wind turbine model under construction could be placed in the layout provided in **Appendix A**.

Table 2.2: Turbine Description – Siemens SWT-2.3-113 2.3 MW	
Operating Data	Specification
General	
Rated capacity (kW)	2300 kW
Cut-in wind speed (m/s)	3 m/s
Cut-out wind speed (m/s)	25 m/s
Rotor	
Number of rotor blades	3
Rotor diameter (m)	113 m
Blade length (m)	55 m
Swept area (m ²)	10000 m ²
Rotor speed (rpm)	6 - 13 rpm
Tower	
Hub height (m)	99.5 m or site-specific
Tip height (m)	154.5 m or site-specific

2.3.2 Electrical Interconnection

A step-up transformer, located in a separate locked room in the nacelle of each wind turbine, is required to transform the electricity created in the nacelle to a standard operating power line voltage (i.e. 690 V to 34.5 kV).

From each step-up transformer, a high voltage cable runs down the turbine tower to the 34.5 kV switchgear located at the bottom of the tower. From the switchgear, underground and/or overhead 34.5 kV collector lines will carry the electricity to the municipal road allowances following the turbine access roads.

The electricity will be transported by the electrical power line collector system to the substation, along the submarine cable to the mainland and then to a switching station located near to an existing Hydro One Networks Inc. 115 kV transmission line.

At the substation the voltage is stepped up from 34.5 kV to 115 kV via a main output transformer. The substation will be operated, monitored and controlled 24-hours a day via a telecommunication system. To facilitate the Project’s connection to the provincial grid, a new 3-6 km long (approximate) 115 kV submarine cable will be constructed as part of the project. The configuration and route for the power line will be determined as part of the REA process.

2.3.3 Access Roads

Existing provincial and municipal roads will be used to transport project-related components, equipment and personnel to the Project Study Area. The Project will be installed on private

lands. Access to these lands will be required for installation and operation of the project components including wind turbines, met tower, operations and maintenance building, substation and switching station. Existing agricultural laneways will be utilized where possible. New access roads will be constructed as required to provide access to the individual turbine sites. Permanent access roads will be approximately 3 - 5 metres wide. The proposed location of the access roads is provided in **Appendix A**.

2.3.4 Operation and Maintenance Building

Associated with the Project will be an operations and maintenance building. The size and location of the operation and maintenance building will be determined and examined during the REA process. Alternative locations for the operation and maintenance building are being considered at this time. The exact location of the operation and maintenance building will be provided in the draft REA reports and during the Final Public Open Houses. The potential location for the operation and maintenance building is provided in **Appendix A**.

2.3.5 Substation

Associated with the Project will be a substation. The substation will be located on private land. The size and location of the substation will be determined and examined during the REA process. The proposed substation location is provided in **Appendix A**.

2.3.6 Switching Station

Associated with the Project will be a switching station where the electrical infrastructure will be connected to the existing Hydro One Networks Inc. transmission system. The switching station will be located on private land. The size and location of the switching station will be determined and examined during the REA process. The general area in which the switching station will be located is provided in **Appendix A**. Final location for the switching station is subject to property owner acceptance of agreement's terms and conditions.

2.3.7 Met Tower

One permanent met tower is anticipated to be required for use during the operation phase of the Project. The required met tower(s) will be located on private land. The number of met towers, their size and location will be determined and examined during the REA process.

2.4 TEMPORARY COMPONENTS

Temporary components during construction may include a temporary dock, storage and staging areas at the turbine locations, crane pads or mats, staging areas along access roads, delivery truck turnaround areas, central laydown areas, crane paths and associated watercourse crossings. The final configuration and location of these components will be determined as part of the REA process.

At this time, it is anticipated that a temporary dock will be installed to transport Project components to and from the Island. However, if required, a permanent dock may be installed instead. The requirement for a temporary or permanent dock will be determined and examined during the REA process. As previously discussed, installation of all Project components will comply with the required federal, provincial and municipal level multiple permits, licenses and authorizations.

3.0 Closure

This Draft Site Plan Report has been prepared by Stantec for Windlectric in accordance Ontario Regulation 359/09, and the “Technical Guide to Renewable Energy Approvals” (MOE 2011).

This report has been prepared by Stantec Consulting Ltd. for the sole benefit of Windlectric, and may not be used by any third party without the express written consent of Windlectric and Stantec Consulting Ltd. The data presented in this report are in accordance with Stantec’s understanding of the Project as it was presented at the time of the Report.

STANTEC CONSULTING LTD.



Kerrie Skillen
Project Manager

4.0 References

Ontario Ministry of the Environment. 2011. Technical Guide to Renewable Energy Approvals.

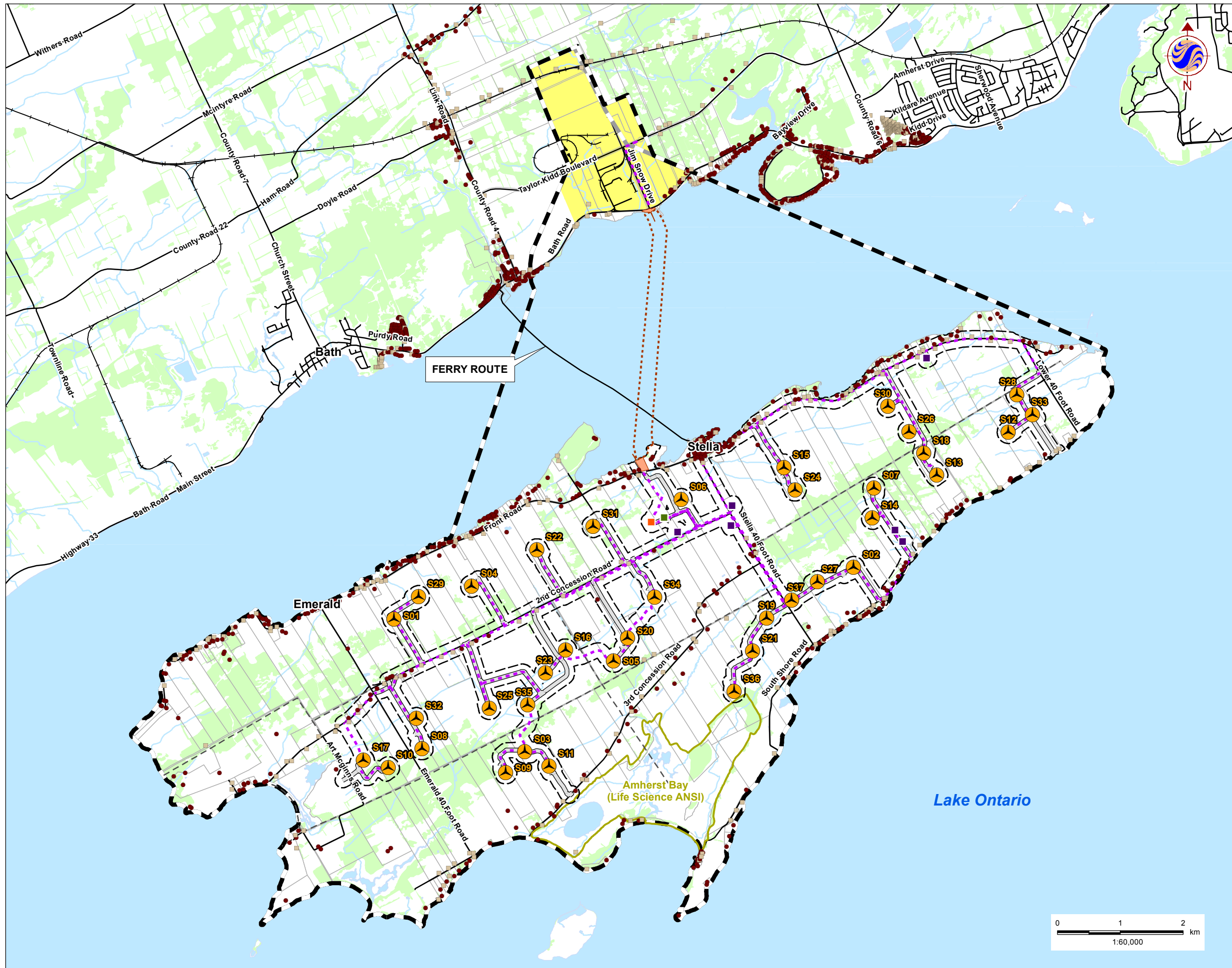
O. Reg. 359/09. 2009. Ontario Regulation 359/09 made under the Environmental Protection Act Renewable Energy Approvals Under Part V.0.1 of the Act.

Stantec

**AMHERST ISLAND WIND ENERGY PROJECT
REVISED DRAFT SITE PLAN REPORT**

Appendix A

Revised Draft Site Plan



Legend

- Current Project Study Area
- Previous Project Study Area
- 120m Zone of Investigation
- Project Components**
- Turbine
- Substation (Potential Location)
- Access Road
- Collector Lines
- Laydown and Storage Area (Potential Location)
- Operation and Maintenance Building (Potential Location)
- Potential Cable Landing Area and Temporary Dock
- Potential Switching Station Area (Final location for Switching Station subject to property owner's acceptance of agreement's terms and conditions)
- Submarine Cable (General Potential Location)
- Noise Receptors**
- Existing
- Vacant
- Existing Features**
- Road
- Unopened Road Allowance
- Railway
- Watercourse
- Waterbody
- Wooded Area
- ANSI Boundary
- Property Boundary

Notes

1. Coordinate System: UTM NAD 83 - Zone 18 (N).
 2. Base features produced under license with the Ontario Ministry of Natural Resources © Queen's Printer for Ontario, 2012.
- *The specific location of the switching station, submarine cable, collector lines as well as cable landing area, laydown and storage area, operations and maintenance building, docks and corresponding access roads has not been finalized at this time. The exact location of these project components will be provided in the draft REA reports and during the Final Public Open House. The draft REA documents will be made available in draft form for review and comment a minimum of 60 days before the Final Public Open House, online at www.amherstislandwindproject.com and in public venues.



Stantec

August 2012
160960595

Client/Project WINDLECTRIC INC. AMHERST ISLAND WIND ENERGY PROJECT	Figure No. DRAFT
Title Revised Draft Site Plan	

Appendix B

UTM Coordinates of Noise Receptors

AMHERST ISLAND WIND ENERGY PROJECT
DRAFT SITE PLAN REPORT

Amherst Island Wind Energy Power Project Receptor List		
X	Y	ID Number
356791.99	4886911.28	R002
363940.79	4885594.70	R003
356772.43	4889527.28	R004
359892.76	4890563.79	R005
364238.50	4892295.50	R007
363456.85	4888708.69	R008
364152.93	4885326.60	R010
366871.50	4893631.50	R011
356185.82	4889116.44	R012
357208.30	4889366.17	R013
366785.73	4893503.00	R014
365757.53	4889070.34	R015
358640.98	4888158.19	R017
364058.68	4892106.68	R018
362062.49	4886820.28	R020
360100.91	4890790.47	R021
362789.15	4891858.60	R022
363071.27	4886338.60	R024
367198.14	4890237.12	R025
367812.33	4891037.78	R026
365534.20	4892983.28	R027
364459.00	4892308.50	R028
367961.92	4891159.90	R029
357966.18	4885928.05	R030
359345.38	4888662.43	R031
355871.58	4888987.20	R032
360714.26	4891207.45	R033
363968.05	4892164.30	R034
361623.04	4891803.11	R035
368044.88	4894070.20	R036
360039.50	4885589.68	R037
359608.11	4888817.51	R039
365622.94	4888850.74	R040
359945.79	4890748.99	R041
357651.31	4886179.24	R043
362909.95	4890438.11	R044
357944.92	4889761.04	R045
362789.27	4890458.64	R048
364067.68	4892423.91	R049

AMHERST ISLAND WIND ENERGY PROJECT
DRAFT SITE PLAN REPORT

Amherst Island Wind Energy Power Project Receptor List		
X	Y	ID Number
356593.43	4886841.98	R050
358266.59	4887854.27	R051
360318.47	4890871.20	R052
365771.98	4893093.16	R054
359694.30	4890625.79	R055
364907.88	4890728.97	R056
364081.72	4892061.39	R057
364563.42	4892350.89	R058
357051.54	4889574.38	R059
358523.45	4889965.82	R060
364297.82	4892572.01	R061
360134.75	4885466.53	R063
365562.50	4893047.50	R065
357960.76	4889769.14	R066
364145.92	4892215.92	R067
364914.13	4890628.61	R068
367872.67	4894023.81	R069
357912.59	4889707.89	R070
355922.07	4889025.08	R071
364648.62	4892459.28	R073
369959.58	4893872.14	R074
355772.38	4888982.38	R075
361162.71	4889512.82	R076
367001.00	4889892.00	R077
360761.73	4891154.89	R078
359603.90	4890575.49	R079
362200.34	4887074.70	R080
360149.92	4890763.95	R081
363883.16	4892346.02	R082
365430.45	4893185.22	R083
361772.36	4892151.43	R084
360668.36	4891180.83	R085
358238.83	4887766.23	R086
364076.08	4892450.62	R087
360378.46	4885826.68	R088
357463.74	4887281.33	R089
358709.17	4890095.64	R090
366966.48	4889847.77	R091
368777.66	4894416.54	R092
359060.49	4888603.82	R093

AMHERST ISLAND WIND ENERGY PROJECT
DRAFT SITE PLAN REPORT

Amherst Island Wind Energy Power Project Receptor List		
X	Y	ID Number
367580.88	4893975.67	R094
362995.81	4891908.08	R096
368666.40	4894335.72	R097
359161.02	4890353.45	R098
368289.83	4891445.19	R099
357760.24	4889635.81	R100
361821.35	4891453.52	R101
360008.43	4885370.98	R102
363863.71	4892162.71	R103
364124.17	4892384.01	R104
367259.00	4890334.00	R105
363640.41	4888526.10	R107
357115.98	4889471.37	R108
362948.62	4888140.40	R109
355512.62	4888493.16	R110
357657.66	4889573.12	R111
365595.35	4893201.63	R112
364527.51	4892412.93	R113
366255.59	4889385.89	R114
365281.75	4888463.11	R115
367226.57	4893765.12	R118
364130.97	4892299.96	R120
363067.00	4891930.89	R122
358576.49	4890038.65	R123
364014.40	4892184.61	R124
369190.37	4893990.02	R125
360676.95	4891063.68	R126
363901.82	4889092.04	R127
366067.71	4889270.82	R128
362558.33	4885711.88	R129
366563.11	4889571.68	R130
366560.01	4893285.06	R131
364448.00	4892350.00	R132
357130.07	4889552.91	R133
367322.00	4890451.00	R134
357512.66	4885994.62	R135
364030.09	4892154.65	R137
359899.29	4890758.87	R138
360377.42	4885707.54	R139
363261.35	4892097.83	R140

AMHERST ISLAND WIND ENERGY PROJECT
DRAFT SITE PLAN REPORT

Amherst Island Wind Energy Power Project Receptor List		
X	Y	ID Number
364167.50	4889387.49	R142
367172.07	4893574.62	R143
364481.94	4890164.44	R145
364160.10	4885361.68	R146
361531.61	4886273.65	R149
366697.50	4889681.50	R150
368980.92	4893970.52	R151
357207.32	4889414.54	R152
368673.56	4893984.71	R153
364533.01	4886347.87	R155
358969.08	4890147.14	R156
360805.18	4891181.67	R157
358304.94	4889843.10	R159
366960.06	4889781.06	R160
364164.51	4892220.22	R161
357981.92	4889753.63	R162
355549.27	4888133.10	R163
361049.60	4891332.61	R164
359813.56	4890699.17	R165
363313.25	4890642.52	R166
359112.80	4888625.16	R167
361769.26	4886562.09	R168
364759.49	4892564.03	R169
356596.95	4886940.52	R170
364079.87	4892095.69	R171
364571.50	4892441.00	R172
364888.91	4890553.76	R173
357177.39	4889515.35	R174
367979.52	4894000.79	R175
369873.56	4893889.92	R176
366495.35	4889660.32	R177
364284.15	4892520.79	R178
366131.03	4889364.64	R179
366000.06	4889210.79	R180
360558.49	4890989.32	R182
359022.54	4888529.52	R183
370000.95	4892471.24	R184
358849.34	4890145.07	R185
358699.09	4890036.32	R186
356230.25	4889242.75	R189

AMHERST ISLAND WIND ENERGY PROJECT
DRAFT SITE PLAN REPORT

Amherst Island Wind Energy Power Project Receptor List		
X	Y	ID Number
365881.29	4893230.08	R190
356076.24	4889101.35	R191
366628.25	4889597.33	R192
360786.52	4891238.18	R193
366225.60	4893109.37	R194
357110.33	4886951.54	R195
357085.68	4889556.82	R196
368995.08	4891793.48	R197
363999.43	4892125.30	R198
363908.65	4892311.31	R199
364468.73	4885927.37	R200
357804.71	4889647.15	R201
367664.60	4894018.20	R202
360988.50	4886500.44	R203
360701.87	4885982.83	R204
358653.66	4890060.11	R205
364039.57	4885783.65	R207
364073.99	4892407.89	R208
355665.18	4887048.36	R209
357393.25	4889357.68	R210
362481.83	4890206.52	R211
362171.50	4886997.00	R213
363116.26	4888321.62	R215
360447.47	4885766.35	R216
359279.36	4888645.19	R219
365109.56	4892816.19	R220
363994.43	4885653.45	R221
359276.93	4890416.04	R222
365458.31	4888626.61	R224
356458.63	4889279.63	R225
365708.52	4893089.43	R226
365573.60	4888708.21	R227
359881.86	4885088.70	R228
363987.89	4892236.23	R229
364061.27	4892209.45	R230
362125.59	4891540.33	R231
364063.00	4892146.93	R232
358903.60	4888447.48	R233
365888.44	4889146.91	R235
364784.13	4886837.20	R236

AMHERST ISLAND WIND ENERGY PROJECT
DRAFT SITE PLAN REPORT

Amherst Island Wind Energy Power Project Receptor List		
X	Y	ID Number
364221.86	4892513.27	R237
364680.37	4892515.61	R238
366019.00	4889228.00	R239
356963.94	4886960.64	R240
356865.69	4889594.86	R241
355589.74	4888836.31	R242
360729.59	4891215.27	R244
365893.16	4893152.98	R245
366901.62	4889728.76	R246
360436.16	4890915.02	R247
363980.34	4889191.75	R248
362068.78	4885843.64	R249
361864.31	4886649.81	R250
366186.27	4889351.28	R251
366368.13	4889475.22	R253
360129.22	4890711.93	R254
360405.60	4889168.48	R255
368821.31	4891649.25	R256
365015.87	4892681.99	R257
364002.10	4885706.42	R258
360150.74	4890807.64	R259
364674.03	4890295.84	R261
355507.36	4888255.29	R262
364091.99	4892389.94	R263
364355.84	4892322.44	R264
368058.23	4891269.00	R265
368149.03	4894136.98	R266
365616.00	4893059.50	R267
358466.58	4889929.90	R268
358452.27	4887972.99	R270
360733.93	4891166.67	R271
364270.76	4892332.54	R272
364131.62	4892203.75	R273
363975.57	4892355.05	R274
361385.55	4891596.72	R275
365906.00	4893126.00	R276
356850.36	4886941.02	R277
366656.92	4889616.31	R278
364392.18	4890112.85	R280
360437.33	4885825.64	R282

AMHERST ISLAND WIND ENERGY PROJECT
DRAFT SITE PLAN REPORT

Amherst Island Wind Energy Power Project Receptor List		
X	Y	ID Number
362698.47	4891900.38	R283
361791.68	4892072.90	R284
363117.73	4886358.58	R286
366448.56	4893197.82	R287
360600.84	4890918.32	R288
366324.67	4893067.79	R289
357026.15	4889597.01	R290
363359.22	4888447.04	R291
359462.49	4890502.56	R292
366725.37	4893494.81	R293
360011.98	4890760.99	R294
367768.00	4890950.01	R295
365371.00	4888610.00	R297
364002.00	4892399.00	R298
356541.93	4889317.61	R299
359451.52	4888734.97	R300
360045.54	4890778.50	R301
364058.70	4885842.45	R302
355849.91	4887097.84	R303
357140.62	4886966.15	R304
366312.92	4889428.92	R305
369559.20	4893778.47	R306
360208.48	4890842.34	R307
360481.23	4889209.58	R308
360737.96	4891222.45	R309
363457.06	4892029.74	R310
363960.17	4892106.65	R311
364228.10	4892320.65	R312
355812.98	4886913.94	R313
358234.47	4889848.79	R314
369383.85	4893953.03	R315
358861.00	4890029.50	R316
356306.06	4889265.41	R317
364299.97	4892531.02	R321
365833.37	4889089.67	R322
366807.62	4889767.18	R323
362432.85	4891632.53	R324
360839.64	4891142.17	R326
367546.67	4890730.43	R327
363066.45	4891847.51	R328

AMHERST ISLAND WIND ENERGY PROJECT
DRAFT SITE PLAN REPORT

Amherst Island Wind Energy Power Project Receptor List		
X	Y	ID Number
358598.75	4888058.38	R329
364584.90	4892408.02	R330
365802.32	4893035.77	R331
360897.04	4891166.81	R332
362146.49	4891675.96	R333
364084.37	4892284.25	R334
367375.88	4893735.23	R335
364175.06	4892438.30	R336
368132.90	4891326.97	R337
361116.34	4886226.86	R338
366644.40	4893339.61	R339
364513.97	4892388.41	R340
364096.72	4892227.82	R341
368512.42	4891539.54	R342
364162.00	4892262.50	R343
364541.62	4892328.49	R344
364254.06	4892556.47	R345
356275.04	4889208.46	R346
357870.56	4889681.48	R347
360487.09	4890949.80	R348
363771.55	4888687.51	R349
366310.62	4893115.48	R350
366775.00	4889715.00	R351
369762.70	4892264.45	R352
359505.18	4890524.40	R353
364780.90	4890838.95	R354
362901.38	4891871.35	R355
362601.99	4887414.35	R356
366747.50	4889709.00	R357
359889.40	4885506.43	R358
360395.60	4890844.22	R360
364006.49	4885726.82	R361
369716.47	4892234.02	R362
358795.71	4888349.25	R364
360797.02	4891118.15	R365
356297.38	4889197.93	R368
360964.50	4890936.76	R369
364907.53	4892723.53	R370
356437.86	4889231.75	R371
356365.02	4889223.95	R372

AMHERST ISLAND WIND ENERGY PROJECT
DRAFT SITE PLAN REPORT

Amherst Island Wind Energy Power Project Receptor List		
X	Y	ID Number
369537.90	4892175.82	R373
369808.09	4893888.60	R374
357788.16	4889638.51	R375
362411.55	4889865.95	R376
356608.70	4889319.34	R377
364101.69	4892354.96	R378
364061.60	4892363.75	R379
362677.46	4891769.94	R380
364083.22	4892221.83	R381
364513.70	4886094.59	R382
367296.00	4890390.50	R383
364269.86	4890004.99	R386
366670.07	4893401.75	R387
361022.74	4891249.13	R389
364032.60	4889675.98	R390
363702.80	4884834.23	R391
355683.03	4888914.80	R392
368196.77	4894189.57	R393
359640.97	4890603.83	R394
361425.85	4891625.99	R396
364010.29	4885617.83	R397
369451.04	4892050.37	R399
366898.77	4893486.41	R401
363944.57	4892248.73	R402
364659.96	4892503.57	R403
365210.49	4893014.14	R404
362808.75	4886297.49	R405
357013.49	4889618.76	R406
360589.87	4891006.88	R407
364183.82	4892238.08	R408
364214.24	4892233.93	R409
356713.07	4886826.68	R410
362359.79	4892436.66	R411
367587.33	4890848.49	R412
359675.05	4884956.79	R413
357207.26	4887085.78	R414
360593.51	4891137.36	R415
362577.14	4891721.32	R416
362565.05	4887449.47	R417
364077.86	4892325.84	R418

AMHERST ISLAND WIND ENERGY PROJECT
DRAFT SITE PLAN REPORT

Amherst Island Wind Energy Power Project Receptor List		
X	Y	ID Number
355936.82	4888922.37	R419
368976.98	4891756.85	R420
361093.39	4891339.61	R421
368132.58	4894055.34	R422
369290.97	4893952.39	R425
361304.22	4891371.72	R427
364218.87	4892469.64	R428
359557.53	4890551.39	R430
366520.00	4893261.50	R431
361493.52	4891408.32	R433
363314.07	4888993.01	R435
362929.51	4891821.86	R436
365948.50	4889170.50	R439
367787.01	4893860.61	R440
361668.14	4886460.24	R441
364265.48	4892286.80	R442
364377.51	4892243.09	R443
364257.52	4892500.62	R444
355541.45	4888682.44	R445
360210.83	4885545.59	R446
360699.86	4891163.49	R447
364023.25	4885737.75	R449
367115.79	4890118.10	R450
364339.50	4892217.00	R452
356236.23	4889175.26	R453
368019.22	4891231.13	R454
357175.26	4889475.22	R455
359915.64	4885248.13	R456
365770.54	4889428.19	R457
367338.94	4893889.10	R459
358748.12	4890166.07	R460
357451.69	4885074.10	R461
360797.43	4891041.62	R462
361866.72	4889919.65	R463
367916.05	4891121.98	R464
359200.74	4888620.65	R465
361720.56	4886415.25	R466
363655.62	4888940.31	R467
360663.22	4891152.40	R468
358454.17	4887913.53	R469

AMHERST ISLAND WIND ENERGY PROJECT
DRAFT SITE PLAN REPORT

Amherst Island Wind Energy Power Project Receptor List		
X	Y	ID Number
366861.23	4893463.95	R470
356983.54	4889644.34	R471
360111.09	4889023.16	R473
359972.60	4890759.47	R474
357620.41	4886072.07	R475
362889.77	4887884.08	R476
366919.87	4893657.10	R477
360614.72	4891157.91	R478
360801.67	4891261.53	R479
359029.32	4890238.21	R480
367776.55	4893926.87	R481
357142.76	4889538.77	R482
360248.62	4889075.35	R483
355806.06	4888916.10	R484
364070.13	4892182.45	R485
363948.51	4892360.28	R486
361389.55	4886229.35	R487
362753.63	4887613.54	R488
364326.99	4892571.12	R489
355464.00	4888172.04	R490
364509.56	4892290.68	R491
364092.80	4892417.23	R492
363946.81	4889535.09	R493
357734.61	4886183.79	R494
357623.85	4885900.98	R495
368371.94	4894048.96	R498
359932.86	4885143.00	R499
360056.77	4885458.65	R500
357603.57	4886116.67	R501
369942.76	4892402.92	R502
363154.58	4888901.77	R503
367434.72	4890591.72	R505
365393.96	4892923.07	R506
362912.99	4891806.11	R507
367543.28	4893803.94	R508
360378.96	4890887.68	R509
364094.48	4892192.98	R510
366940.13	4893673.20	R511
364182.67	4892504.65	R512
361460.88	4886275.24	R514

AMHERST ISLAND WIND ENERGY PROJECT
DRAFT SITE PLAN REPORT

Amherst Island Wind Energy Power Project Receptor List		
X	Y	ID Number
364433.50	4892293.00	R515
364115.78	4889769.94	R516
368681.35	4894037.67	R517
359892.16	4890709.26	R518
367019.77	4890008.48	R519
359123.26	4885905.77	R520
364824.00	4892665.50	R521
359403.47	4890490.53	R522
361324.21	4891464.63	R523
361122.77	4891394.86	R524
359205.92	4890381.89	R525
362021.87	4891478.83	R526
361306.23	4891546.87	R527
367899.73	4894003.94	R528
363907.32	4892083.07	R529
358037.29	4889756.45	R531
366124.55	4889308.12	R532
359064.13	4890367.25	R533
360132.24	4885655.10	R534
366953.46	4893452.16	R537
360528.82	4890971.06	R538
358752.18	4890104.00	R540
359435.68	4890475.26	R541
364977.00	4892760.02	R544
365229.11	4887408.34	R545
360682.54	4891197.03	R547
364599.59	4892459.65	R548
360940.18	4891213.77	R549
364361.50	4892284.00	R550
357980.99	4889729.97	R551
359147.71	4888645.85	R552
364288.50	4892295.00	R553
364069.87	4892342.58	R554
363018.99	4888085.42	R555
366390.58	4889652.92	R556
363796.42	4892014.68	R557
364246.49	4892246.08	R558
364318.50	4892229.50	R559
366733.08	4889670.90	R560
358594.82	4888104.32	R561

AMHERST ISLAND WIND ENERGY PROJECT
DRAFT SITE PLAN REPORT

Amherst Island Wind Energy Power Project Receptor List		
X	Y	ID Number
359240.34	4890437.26	R562
356775.14	4886842.33	R563
368500.20	4894374.08	R565
365546.34	4893198.72	R567
367502.83	4893727.01	R568
358913.04	4890176.63	R569
367044.72	4893676.02	R570
364036.52	4889790.06	R571
363517.38	4891934.37	R573
361280.74	4891426.93	R574
356610.12	4889412.34	R575
361477.39	4891672.19	R576
359041.01	4890165.89	R577
365566.92	4888833.85	R578
357971.22	4887677.87	R579
356027.07	4889062.78	R580
357957.57	4889741.15	R581
368198.36	4891376.57	R582
359511.69	4890469.46	R584
362088.06	4891715.90	R585
367153.35	4893733.84	R587
355831.69	4888972.46	R588
356647.72	4889431.21	R589
369625.84	4893805.14	R590
363953.48	4892194.33	R591
360756.36	4891209.74	R593
363982.53	4892267.52	R594
364228.82	4892240.63	R595
364036.00	4892425.50	R596
364783.06	4892608.38	R597
360679.64	4889283.51	R598
362830.77	4891653.15	R600
362078.24	4891512.26	R602
359923.84	4888947.45	R604
364312.43	4889960.35	R607
369253.28	4891943.28	R608
369303.10	4891968.86	R609
362240.74	4886992.80	R610
363446.81	4891984.95	R611
359317.31	4890472.65	R612

AMHERST ISLAND WIND ENERGY PROJECT
DRAFT SITE PLAN REPORT

Amherst Island Wind Energy Power Project Receptor List		
X	Y	ID Number
358798.14	4888272.88	R613
366591.61	4889594.60	R614
366691.50	4889633.50	R615
366974.00	4889878.00	R616
358252.47	4887162.54	R617
363401.04	4892017.14	R618
364845.62	4890591.32	R619
362854.31	4891843.92	R620
364096.50	4892045.42	R621
366373.71	4893148.53	R622
361623.09	4891448.19	R623
362840.69	4891877.76	R625
362457.08	4891735.76	R626
362714.91	4887724.31	R627
364176.41	4892227.10	R628
364157.35	4892327.82	R631
367412.99	4893773.34	R632
362613.85	4891872.95	R633
360541.43	4891112.27	R636
361463.36	4886045.17	R637
367595.50	4893832.19	R638
361144.26	4891458.50	R641
357782.57	4887486.60	R642
361178.42	4891488.63	R643
357541.34	4887291.18	R644
362935.43	4886344.48	R646
362241.32	4885568.50	R647
359963.03	4885306.04	R648
364624.03	4886510.85	R649
364715.28	4886640.49	R652
364059.99	4885824.66	R656
364579.47	4886266.70	R657
364035.34	4885723.02	R658
364041.18	4885701.20	R659
355738.51	4887974.26	R661
355945.47	4886549.89	R662
355928.30	4886562.70	R663
356206.24	4889223.16	R664
361446.15	4889693.33	R667
364290.93	4892525.57	R668

AMHERST ISLAND WIND ENERGY PROJECT
DRAFT SITE PLAN REPORT

Amherst Island Wind Energy Power Project Receptor List		
X	Y	ID Number
356173.82	4887544.66	R669
361834.15	4891346.66	R670
356458.42	4889001.82	R671
356472.48	4889036.73	R672
366974.00	4890051.00	R673
364106.00	4892298.50	R675
364055.50	4892399.00	R676
364117.78	4892402.18	R677
364466.75	4889565.81	R678
356919.07	4889601.02	R679
356554.56	4888907.87	R680
355504.69	4888692.97	R681
355546.81	4888244.75	R682
355479.87	4888166.27	R683
356392.01	4887106.28	R684
356779.79	4886926.40	R685
357305.46	4887725.84	R686
357308.88	4889433.91	R687
357448.20	4889330.97	R688
357295.46	4887048.08	R689
358007.83	4885892.14	R690
359074.34	4885854.17	R691
360326.92	4885664.33	R692
361774.51	4886598.01	R693
358435.19	4889081.98	R694
359182.93	4890360.04	R695
359353.47	4890487.40	R696
359774.22	4890703.21	R697
360401.76	4890935.29	R698
362106.68	4891705.64	R699
362390.62	4892426.65	R700
363294.14	4892136.43	R701
363925.25	4892260.27	R702
364023.93	4892194.87	R703
364126.49	4892156.77	R704
364195.20	4892263.38	R705
364297.25	4892526.99	R706
364963.01	4892326.98	R707
365564.63	4893159.44	R708
364932.31	4890604.86	R709

AMHERST ISLAND WIND ENERGY PROJECT
DRAFT SITE PLAN REPORT

Amherst Island Wind Energy Power Project Receptor List		
X	Y	ID Number
364664.62	4890379.39	R710
362959.03	4888079.75	R711
362836.79	4886349.86	R712
364067.38	4885854.34	R713
364088.89	4885829.97	R714
364052.19	4885812.07	R715
364079.57	4885812.97	R716
364033.84	4885712.48	R717
364043.16	4885735.95	R718
364063.78	4885770.56	R719
363943.17	4889237.37	R720
366870.14	4893609.60	R723
367972.81	4891218.02	R724
369413.71	4893892.67	R725
368834.11	4894355.71	R726
358883.35	4893560.32	M005
358900.54	4893560.98	M007
358922.37	4893562.96	M008
358938.91	4893562.96	M010
358939.57	4893676.07	M011
358941.55	4893660.20	M012
358943.54	4893644.99	M013
358943.54	4893628.45	M014
358949.14	4893698.59	M015
358956.11	4893774.63	M017
358958.09	4893571.56	M018
358966.03	4893622.50	M019
358966.18	4893753.74	M020
358976.61	4893682.03	M021
358977.27	4893576.19	M022
358980.58	4893702.80	M023
358981.90	4893725.68	M024
358995.79	4893776.62	M027
359016.96	4893793.15	M030
359040.77	4893805.06	M032
359048.71	4894049.14	M033
359059.96	4894044.51	M035
359064.59	4894094.78	M036
359069.22	4894045.83	M037
359071.81	4893804.26	M038

AMHERST ISLAND WIND ENERGY PROJECT
DRAFT SITE PLAN REPORT

Amherst Island Wind Energy Power Project Receptor List		
X	Y	ID Number
359075.83	4894092.13	M039
359078.48	4894043.18	M040
359083.77	4894090.81	M041
359091.04	4894037.23	M042
359096.34	4893863.93	M043
359100.97	4893801.75	M044
359105.60	4894039.88	M045
359111.55	4894087.50	M046
359116.18	4894039.88	M047
359122.13	4894084.19	M048
359125.44	4894131.16	M049
359126.76	4893807.70	M050
359128.75	4894036.57	M051
359129.41	4894162.91	M052
359133.38	4894150.34	M053
359134.04	4893867.24	M054
359134.04	4894083.53	M055
359134.04	4894172.17	M056
359135.36	4894207.89	M057
359136.02	4894197.97	M058
359137.35	4894034.59	M059
359143.30	4894241.62	M060
359143.96	4894081.55	M061
359148.59	4894033.26	M062
359151.24	4893800.43	M063
359151.24	4894110.65	M064
359155.21	4894077.58	M065
359159.18	4894033.26	M066
359164.47	4894111.98	M067
359165.13	4894076.92	M068
359166.45	4894247.58	M069
359169.10	4894030.62	M070
359172.40	4893799.77	M071
359176.37	4894074.27	M072
359179.02	4894160.26	M073
359180.34	4894028.63	M074
359181.66	4894191.35	M075
359185.63	4894073.61	M076
359186.29	4894109.99	M077
359189.60	4894242.28	M078

AMHERST ISLAND WIND ENERGY PROJECT
DRAFT SITE PLAN REPORT

Amherst Island Wind Energy Power Project Receptor List		
X	Y	ID Number
359190.93	4894026.65	M079
359192.25	4893771.32	M080
359196.88	4894075.60	M081
359196.88	4894160.26	M082
359199.52	4894191.35	M083
359200.19	4894025.99	M084
359203.49	4894109.33	M085
359206.80	4894072.95	M086
359206.80	4894237.65	M087
359211.43	4894024.00	M088
359211.43	4894156.96	M089
359217.38	4894070.97	M090
359218.05	4894188.71	M091
359221.35	4894022.68	M092
359222.01	4893766.03	M093
359224.66	4894105.36	M094
359225.98	4894069.64	M095
359229.82	4893867.24	M096
359233.26	4894235.67	M097
359233.26	4894153.65	M098
359233.26	4894020.69	M099
359236.57	4894186.72	M101
359237.89	4894069.64	M102
359239.21	4894347.46	M103
359243.18	4894021.36	M104
359243.18	4894105.36	M105
359247.15	4894353.41	M106
359249.80	4894065.67	M107
359251.12	4894152.32	M108
359251.78	4894232.36	M109
359253.76	4894020.69	M110
359257.73	4894184.74	M111
359260.38	4893744.20	M113
359260.38	4894102.05	M114
359261.04	4894358.04	M115
359262.36	4894065.67	M116
359263.02	4894018.05	M117
359268.32	4894151.00	M118
359270.30	4894358.04	M119
359270.30	4894235.67	M120

AMHERST ISLAND WIND ENERGY PROJECT
DRAFT SITE PLAN REPORT

Amherst Island Wind Energy Power Project Receptor List		
X	Y	ID Number
359271.62	4894065.67	M121
359274.27	4894183.41	M122
359276.91	4894014.74	M123
359277.58	4893860.62	M124
359278.90	4894099.41	M125
359282.21	4894064.35	M126
359284.85	4894350.76	M127
359286.84	4894013.42	M128
359286.84	4894146.37	M129
359290.14	4894192.01	M130
359290.14	4894336.87	M131
359292.13	4894061.71	M132
359292.79	4894315.04	M133
359294.11	4893749.50	M134
359295.44	4894096.76	M135
359296.10	4894324.97	M136
359297.42	4894012.10	M137
359298.08	4894301.81	M138
359302.71	4894290.57	M139
359303.37	4894145.71	M140
359305.36	4894061.71	M141
359306.02	4894282.63	M142
359308.66	4894007.47	M143
359310.65	4894095.44	M144
359313.30	4894272.71	M145
359315.28	4894263.45	M146
359317.93	4894059.72	M147
359321.23	4894252.87	M148
359325.86	4894233.68	M149
359325.86	4894243.61	M150
359327.19	4898519.28	M151
359333.14	4894222.44	M152
359335.12	4894213.84	M153
359340.42	4894205.24	M154
359342.40	4893969.10	M155
359343.06	4898551.30	M156
359344.38	4893857.31	M157
359347.03	4894194.66	M158
359353.64	4894176.14	M160
359357.61	4894164.23	M161

AMHERST ISLAND WIND ENERGY PROJECT
DRAFT SITE PLAN REPORT

Amherst Island Wind Energy Power Project Receptor List		
X	Y	ID Number
359360.26	4894133.14	M162
359360.26	4894145.05	M163
359360.26	4894154.97	M164
359360.92	4893860.62	M165
359363.57	4894125.21	M166
359368.20	4894114.62	M168
359368.86	4894105.36	M169
359370.84	4894082.87	M170
359370.84	4894092.79	M171
359373.49	4894072.29	M172
359380.76	4893856.65	M173
359399.95	4893858.64	M174
359405.50	4898665.60	M175
359419.26	4898504.73	M177
359422.44	4893861.28	M178
359456.83	4893770.66	M180
359457.36	4898537.54	M181
359495.20	4893754.79	M183
359507.10	4893818.95	M184
359540.84	4893748.17	M185
359543.09	4898684.65	M186
359548.77	4893819.61	M187
359574.57	4893750.82	M188
359594.94	4898628.55	M189
359606.59	4898439.11	M190
359608.70	4898465.57	M191
359634.10	4898729.10	M193
359664.79	4897450.63	M194
359677.49	4898397.84	M195
359682.79	4898762.96	M196
359699.72	4898263.43	M197
359714.54	4897377.87	M198
359733.59	4898812.97	M199
359742.05	4898234.85	M200
359750.52	4898175.59	M201
359750.52	4898723.80	M202
359752.64	4897971.59	M203
359774.11	4897408.65	M204
359774.86	4898842.34	M205
359793.29	4897368.30	M206

AMHERST ISLAND WIND ENERGY PROJECT
DRAFT SITE PLAN REPORT

Amherst Island Wind Energy Power Project Receptor List		
X	Y	ID Number
359808.73	4898769.31	M207
359809.83	4897421.21	M208
359818.25	4898054.94	M209
359828.35	4897497.28	M210
359844.89	4897217.48	M211
359844.89	4897443.04	M212
359851.50	4897385.50	M213
359861.65	4897990.38	M214
359864.07	4897451.64	M215
359880.61	4897457.59	M216
359880.70	4898811.65	M217
359900.45	4897241.30	M218
359913.68	4897408.65	M219
359915.00	4897488.02	M220
359934.67	4898864.56	M221
359956.90	4897657.00	M222
359963.29	4897255.19	M223
359975.20	4897497.28	M224
359988.65	4897582.92	M225
359991.07	4897452.30	M226
359995.04	4896515.68	M227
360000.33	4897424.52	M228
360001.65	4897217.48	M229
360009.81	4899004.26	M230
360016.87	4897378.88	M231
360018.85	4897527.71	M232
360034.07	4897343.82	M233
360034.73	4897239.31	M234
360038.62	4897923.91	M235
360052.59	4897292.89	M236
360069.12	4897265.11	M237
360085.66	4897248.57	M238
360087.64	4897180.44	M239
360092.27	4897216.16	M240
360097.65	4897637.95	M241
360098.23	4897323.98	M242
360109.47	4897126.86	M243
360112.78	4897278.34	M244
360133.64	4897555.40	M245
360154.80	4898917.48	M247

AMHERST ISLAND WIND ENERGY PROJECT
DRAFT SITE PLAN REPORT

Amherst Island Wind Energy Power Project Receptor List		
X	Y	ID Number
360163.80	4899019.35	M248
360167.02	4897023.68	M249
360173.01	4897678.04	M250
360174.96	4896863.60	M251
360193.48	4896986.64	M252
360209.35	4896953.56	M254
360214.64	4896904.61	M255
360309.32	4899154.55	M257
360316.73	4899031.78	M258
360317.83	4896472.02	M259
360344.99	4899092.24	M260
360356.20	4896632.09	M261
360368.76	4896607.62	M262
360380.67	4896581.16	M263
360390.81	4897145.83	M264
360402.45	4899272.02	M265
360403.16	4896554.70	M266
360525.22	4899282.61	M268
360527.34	4899220.16	M269
360548.68	4894540.56	M270
360575.14	4894560.40	M271
360576.50	4897856.63	M272
360596.97	4894581.57	M273
360609.57	4896295.59	M274
360611.52	4894592.15	M275
360617.30	4899488.98	M276
360624.09	4894606.04	M277
360630.70	4894648.38	M278
360635.33	4894688.72	M279
360637.98	4894709.89	M280
360637.98	4894621.26	M281
360647.99	4895463.34	M282
360652.53	4894721.80	M283
360660.47	4894631.84	M284
360671.05	4894639.78	M285
360673.04	4894713.86	M286
360676.56	4899433.95	M287
360683.97	4897803.05	M288
360686.26	4894678.80	M289
360694.24	4897901.61	M290

AMHERST ISLAND WIND ENERGY PROJECT
DRAFT SITE PLAN REPORT

Amherst Island Wind Energy Power Project Receptor List		
X	Y	ID Number
360698.17	4894705.26	M291
360698.83	4894764.79	M292
360704.12	4894717.17	M293
360708.75	4894773.39	M294
360721.32	4894789.27	M295
360730.58	4894697.32	M296
360732.57	4894795.88	M297
360737.86	4894809.11	M298
360744.47	4894814.40	M299
360750.43	4894824.32	M300
360758.36	4895552.59	M301
360759.03	4894719.15	M302
360759.69	4894842.84	M303
360770.76	4899622.33	M304
360776.88	4894757.52	M305
360783.50	4894779.34	M306
360785.48	4895358.12	M307
360788.13	4895391.19	M308
360809.30	4894807.79	M309
360820.54	4895649.16	M310
360824.51	4894844.83	M311
360824.51	4894828.29	M312
360828.96	4894934.70	M313
360832.14	4899458.29	M314
360833.11	4895129.26	M315
360836.42	4895384.58	M316
360839.72	4894861.37	M317
360843.78	4899546.13	M318
360850.97	4895587.65	M319
360875.48	4897978.34	M320
360891.41	4899603.28	M321
360896.61	4895172.91	M322
360906.53	4895164.98	M323
360911.16	4895154.39	M324
360913.81	4895452.05	M325
360915.79	4895143.15	M326
360921.74	4895134.55	M327
360927.04	4895416.33	M329
360928.36	4895124.63	M330
360932.33	4895116.03	M331

AMHERST ISLAND WIND ENERGY PROJECT
DRAFT SITE PLAN REPORT

Amherst Island Wind Energy Power Project Receptor List		
X	Y	ID Number
360935.64	4895028.05	M332
360936.96	4895103.46	M333
360939.60	4895016.81	M334
360940.27	4895096.85	M335
360944.90	4895375.32	M336
360945.56	4895004.24	M337
360950.19	4895084.28	M338
360950.19	4894930.16	M339
360950.85	4894991.01	M340
360953.49	4895348.20	M341
360955.48	4894969.85	M342
360957.46	4895077.00	M343
360965.40	4895318.43	M344
360966.72	4895074.36	M345
360974.66	4895071.05	M346
360983.26	4895067.08	M347
360988.55	4894999.61	M348
360991.86	4895067.74	M349
360991.86	4894877.90	M350
360994.51	4895054.51	M351
360995.83	4895229.80	M352
360997.15	4894977.12	M353
361036.18	4894975.80	M354
361037.46	4899769.44	M355
361045.44	4895317.77	M356
361046.10	4895102.14	M357
361056.51	4899794.84	M358
361059.99	4895064.43	M359
361071.90	4895022.76	M360
361071.90	4894802.50	M361
361075.86	4895008.21	M362
361087.20	4899944.07	M363
361094.39	4894836.23	M364
361115.55	4895125.95	M365
361118.20	4894953.97	M366
361118.86	4894867.98	M367
361131.43	4895087.58	M368
361133.41	4895073.03	M369
361136.72	4894961.25	M370
361147.52	4900002.27	M371

AMHERST ISLAND WIND ENERGY PROJECT
DRAFT SITE PLAN REPORT

Amherst Island Wind Energy Power Project Receptor List		
X	Y	ID Number
361149.64	4900158.91	M372
361162.52	4894964.55	M374
361165.82	4894889.15	M375
361170.81	4900231.93	M376
361181.39	4900053.07	M377
361181.70	4894985.72	M378
361188.80	4900351.52	M379
361197.26	4900314.48	M380
361203.53	4895060.46	M381
361218.74	4894932.14	M382
361220.55	4900246.75	M383
361231.34	4898130.48	M384
361235.28	4895000.27	M385
361238.54	4895079.16	M386
361253.14	4894942.06	M387
361265.00	4900225.58	M388
361265.70	4895004.24	M389
361268.17	4900138.80	M390
361270.33	4894952.65	M391
361289.34	4900174.78	M392
361290.18	4895030.04	M393
361310.51	4900268.97	M394
361313.68	4900290.14	M395
361314.74	4900227.70	M396
361317.91	4900077.42	M397
361322.59	4895048.56	M398
361331.19	4895111.40	M399
361338.46	4895008.21	M400
361342.43	4895114.70	M401
361356.99	4895012.18	M402
361377.18	4900302.84	M403
361377.49	4895041.28	M404
361380.14	4895022.10	M405
361389.88	4900191.72	M406
361390.06	4895042.61	M407
361393.37	4895067.08	M408
361409.24	4895081.63	M409
361413.87	4895071.05	M410
361438.34	4895087.58	M411
361451.57	4895094.20	M412

**AMHERST ISLAND WIND ENERGY PROJECT
DRAFT SITE PLAN REPORT**

Amherst Island Wind Energy Power Project Receptor List		
X	Y	ID Number
361460.17	4895104.12	M413
361467.14	4900295.43	M414
361507.14	4895139.18	M415
361517.72	4895148.44	M416
361530.95	4895157.04	M417
361586.73	4900273.21	M418
361598.37	4900459.48	M419
361611.65	4895204.00	M420
361658.70	4900506.04	M421
361668.22	4900318.72	M422
361703.15	4900527.21	M423
361739.13	4900465.83	M424
361753.90	4898315.68	M425
361810.78	4900427.06	M427
361832.27	4900508.16	M428
361903.17	4900538.85	M429
362046.89	4895802.62	M430
362073.35	4895814.53	M431
362088.56	4895845.62	M432
362161.41	4898334.34	M434
362239.41	4898432.10	M435
362253.92	4895968.65	M436
362272.48	4896158.00	M437
362305.55	4898442.68	M438
362365.71	4895990.48	M439
362466.95	4899047.26	M440
362564.85	4895997.93	M442
362603.18	4896009.00	M443
362664.06	4898535.29	M444
362777.84	4898567.04	M445
362998.55	4898587.28	M447
363184.82	4898630.67	M448
363386.96	4898671.95	M449
363395.43	4897374.43	M450
363414.48	4897281.29	M451
363485.39	4896287.52	M452
363495.97	4897416.76	M453
363560.53	4897445.34	M454
363574.86	4896352.30	M455
363580.81	4896387.35	M456

**AMHERST ISLAND WIND ENERGY PROJECT
DRAFT SITE PLAN REPORT**

Amherst Island Wind Energy Power Project Receptor List		
X	Y	ID Number
363594.39	4898720.63	M457
363605.98	4899079.01	M458
363607.93	4896378.75	M459
363632.41	4896388.68	M460
363655.78	4896424.04	M461
363702.34	4896500.24	M462
363721.04	4896509.06	M463
363746.18	4896544.12	M464
363780.66	4896567.98	M465
363822.25	4896657.23	M466
363840.77	4896675.09	M467
363856.64	4896692.95	M468
363878.47	4896566.61	M469
363897.03	4896529.74	M470
363909.78	4896719.32	M471
363926.71	4897609.38	M472
363950.57	4896488.56	M473
363961.64	4898813.76	M474
363979.01	4896487.89	M475
364019.36	4896503.11	M476
364034.57	4896565.29	M477
364055.08	4896544.78	M478
364084.40	4897732.14	M480
364101.38	4896556.03	M481
364129.16	4896573.88	M482
364152.98	4896590.42	M483
364160.60	4898853.98	M484
364189.36	4896614.23	M485
364199.28	4896628.79	M486
364211.84	4896795.47	M487
364221.77	4896638.71	M488
364233.63	4896887.59	M489
364242.93	4896644.00	M490
364248.45	4897988.26	M491
364267.41	4896636.06	M492
364277.33	4896661.20	M493
364316.36	4896762.40	M494
364365.30	4896744.54	M495
364390.44	4896956.87	M496
364397.72	4896749.83	M497

AMHERST ISLAND WIND ENERGY PROJECT
DRAFT SITE PLAN REPORT

Amherst Island Wind Energy Power Project Receptor List		
X	Y	ID Number
364406.98	4896964.81	M498
364432.77	4896768.35	M499
364446.00	4896985.97	M500
364452.70	4898149.13	M501
364464.52	4896799.44	M502
364481.72	4897003.83	M503
364490.98	4896816.64	M504
364498.26	4897013.09	M505
364512.81	4896825.24	M506
364521.41	4896851.04	M507
364526.04	4897025.00	M508
364537.94	4897030.95	M509
364542.66	4898016.84	M510
364561.71	4898284.60	M511
364571.68	4896909.24	M512
364587.55	4897061.38	M513
364597.48	4896990.60	M514
364612.69	4896929.75	M515
364647.09	4896974.73	M516
364669.66	4897109.84	M517
364684.79	4897013.76	M518
364721.83	4897024.34	M519
364741.67	4897047.49	M520
364760.68	4897014.59	M521
364777.61	4898398.90	M522
364787.31	4897064.03	M523
364819.73	4897048.81	M524
364845.52	4897111.65	M525
364862.72	4897208.22	M526
364873.30	4897122.90	M527
364879.92	4897242.62	M528
364901.75	4897155.31	M529
364919.61	4897173.17	M530
364942.76	4897191.03	M531
364967.23	4897198.96	M533
364987.74	4897212.19	M534
365008.90	4896451.51	M535
365010.89	4896654.58	M536
365013.53	4896672.44	M537
365016.84	4897236.67	M538

AMHERST ISLAND WIND ENERGY PROJECT
DRAFT SITE PLAN REPORT

Amherst Island Wind Energy Power Project Receptor List		
X	Y	ID Number
365018.83	4896692.95	M539
365020.15	4896626.80	M540
365022.79	4896396.61	M541
365023.46	4896544.12	M542
365023.46	4896589.76	M543
365024.12	4896561.98	M544
365026.10	4896517.00	M545
365032.72	4897398.06	M546
365036.69	4896711.47	M547
365039.33	4897248.57	M548
365043.30	4896380.08	M549
365044.62	4896729.33	M550
365053.22	4896358.25	M551
365054.54	4897346.47	M552
365055.21	4896749.17	M553
365061.16	4897248.57	M554
365070.42	4896335.76	M555
365080.34	4897268.42	M556
365082.99	4896759.09	M557
365087.62	4896786.21	M558
365088.94	4896809.36	M559
365092.91	4896829.87	M560
365094.89	4896317.24	M561
365104.15	4897300.17	M562
365112.09	4896843.76	M563
365117.38	4896300.04	M564
365118.04	4897367.64	M565
365129.29	4896855.67	M566
365129.95	4896280.86	M567
365133.26	4896879.48	M568
365144.50	4896899.98	M569
365147.81	4896262.34	M570
365161.70	4896249.11	M571
365172.95	4896907.26	M572
365177.58	4896926.44	M573
365182.87	4896229.93	M574
365195.44	4896940.99	M575
365204.70	4896955.55	M576
365212.63	4896227.94	M577
365215.94	4896972.08	M578

AMHERST ISLAND WIND ENERGY PROJECT
DRAFT SITE PLAN REPORT

Amherst Island Wind Energy Power Project Receptor List		
X	Y	ID Number
365225.20	4896986.64	M579
365227.85	4896205.45	M580
365247.69	4896192.22	M581
365247.69	4896999.86	M582
365262.90	4896175.02	M583
365262.90	4897009.79	M584
365278.12	4897026.32	M585
365286.72	4896172.38	M586
365293.33	4897042.20	M587
365301.93	4897062.70	M588
365319.79	4896179.65	M589
365329.05	4897080.56	M590
365350.22	4897308.10	M592
365352.86	4896184.95	M593
365354.41	4897380.78	M594
365379.98	4896228.60	M595
365380.64	4897288.26	M596
365381.97	4897404.02	M597
365386.60	4897342.50	M598
365399.17	4896237.86	M599
365400.49	4897265.11	M600
365404.46	4897425.18	M601
365413.72	4897327.95	M602
365420.33	4897251.22	M603
365427.61	4896237.20	M604
365428.27	4897111.65	M605
365432.90	4897447.01	M606
365434.88	4897368.96	M607
365442.16	4897311.41	M608
365442.82	4897247.91	M609
365449.44	4897397.40	M611
365450.76	4896219.34	M612
365464.65	4897230.05	M613
365469.28	4897124.22	M614
365471.26	4896229.26	M615
365475.89	4897341.84	M616
365488.46	4897281.65	M617
365488.46	4897418.57	M618
365489.12	4897210.21	M619
365493.09	4896220.00	M620

AMHERST ISLAND WIND ENERGY PROJECT
DRAFT SITE PLAN REPORT

Amherst Island Wind Energy Power Project Receptor List		
X	Y	ID Number
365513.60	4897257.17	M621
365516.24	4897189.04	M622
365516.90	4897446.35	M623
365520.21	4896230.59	M624
365540.72	4897196.98	M625
365540.72	4897458.26	M626
365552.62	4896225.30	M627
365575.77	4896244.48	M628
365575.77	4897198.96	M629
365579.74	4897482.73	M630
365603.56	4897532.34	M631
365607.52	4896240.51	M632
365612.16	4897970.89	M633
365628.03	4896241.83	M634
365646.55	4896261.01	M635
365655.15	4897564.09	M636
365673.67	4896261.01	M637
365681.61	4897584.60	M638
365684.25	4897148.69	M639
365692.85	4898001.31	M640
365696.16	4896286.81	M641
365703.44	4897972.21	M642
365707.41	4897611.71	M643
365726.59	4896295.41	M644
365738.49	4896312.61	M645
365739.82	4897901.43	M646
365741.17	4897712.43	M647
365741.80	4897634.87	M648
365751.72	4897855.13	M649
365764.29	4897806.18	M650
365770.91	4896322.53	M651
365771.57	4897781.71	M652
365784.13	4897660.00	M653
365798.69	4897728.79	M654
365805.30	4897093.13	M655
365805.30	4896333.77	M656
365815.26	4897027.16	M657
365825.15	4896338.41	M658
365848.96	4896358.91	M659
365874.75	4897003.17	M661

AMHERST ISLAND WIND ENERGY PROJECT
DRAFT SITE PLAN REPORT

Amherst Island Wind Energy Power Project Receptor List		
X	Y	ID Number
365877.40	4897091.15	M662
365883.35	4896369.49	M663
365884.01	4897685.14	M664
365893.28	4896400.58	M665
365901.21	4896997.22	M666
365903.86	4897081.89	M667
365917.09	4896417.12	M668
365922.38	4897079.24	M669
365930.32	4896993.25	M670
365931.64	4896897.34	M671
365934.95	4896440.93	M672
365940.24	4896863.60	M673
365946.19	4896923.14	M674
365948.84	4897075.27	M675
365952.15	4896829.87	M676
365956.11	4896993.91	M677
365962.07	4896457.47	M678
365971.36	4896888.25	M679
365974.63	4896928.43	M680
365978.60	4897083.21	M681
365982.57	4896468.71	M682
365987.20	4896987.96	M683
365997.79	4896808.70	M684
365999.11	4896782.24	M685
366000.43	4896479.96	M686
366007.71	4897065.35	M687
366009.69	4896928.43	M688
366016.97	4896755.12	M689
366017.63	4896853.68	M690
366022.92	4896501.12	M691
366030.86	4897066.67	M692
366036.15	4896948.93	M693
366036.15	4896553.38	M694
366040.12	4896880.14	M695
366044.75	4896986.64	M696
366048.06	4897060.06	M697
366048.72	4896790.18	M698
366052.03	4896511.71	M699
366064.59	4896631.43	M700
366065.92	4896743.88	M701

AMHERST ISLAND WIND ENERGY PROJECT
DRAFT SITE PLAN REPORT

Amherst Island Wind Energy Power Project Receptor List		
X	Y	ID Number
366067.24	4897063.36	M702
366078.48	4896536.84	M703
366081.13	4896837.81	M704
366083.78	4896922.47	M705
366093.70	4896972.74	M706
366101.64	4897056.75	M707
366109.57	4896738.59	M708
366118.83	4896893.37	M709
366132.06	4897053.44	M710
366143.97	4896766.37	M711
366144.63	4896541.47	M712
366145.95	4896847.07	M713
366148.60	4896720.73	M714
366159.84	4896935.04	M715
366159.84	4897045.51	M716
366173.73	4896556.03	M717
366187.62	4896715.44	M718
366192.26	4896593.07	M719
366202.18	4896927.77	M720
366209.45	4897028.97	M721
366212.10	4896608.28	M722
366216.07	4896704.19	M723
366225.33	4896665.83	M724
366225.33	4896634.08	M725
366236.57	4896910.57	M727
366259.72	4896917.18	M728
366286.18	4896913.21	M729
366290.19	4897013.93	M730
366315.95	4896912.55	M731
366356.30	4896898.00	M732
366386.06	4896896.02	M733
366419.80	4896888.74	M734
366458.16	4896978.04	M735
366466.10	4896879.48	M736
366499.17	4896865.59	M737
366545.47	4896862.28	M738
366587.81	4896831.85	M739
366608.31	4896842.44	M740
366636.09	4896835.16	M741
366675.78	4896857.65	M742

AMHERST ISLAND WIND ENERGY PROJECT
DRAFT SITE PLAN REPORT

Amherst Island Wind Energy Power Project Receptor List		
X	Y	ID Number
366708.19	4896921.81	M743
366718.12	4896845.74	M744
366750.35	4897573.39	M745
366759.79	4896856.33	M746
366762.43	4896924.46	M747
366781.62	4897472.15	M748
366810.06	4896939.67	M749
366839.82	4896994.57	M750
366862.31	4897378.22	M751
366872.24	4897287.60	M752
366890.10	4897259.82	M753
366895.39	4897012.43	M754
366902.66	4897228.73	M755
366917.88	4897202.93	M757
366926.48	4897167.88	M758
366931.77	4897144.72	M759
366950.41	4897536.06	M760
366951.59	4897517.92	M761
366952.27	4897105.04	M762
366959.08	4897502.55	M764
366970.12	4897462.35	M765
366970.79	4897069.98	M766
366972.48	4897489.54	M767
366984.70	4897473.38	M768
366991.01	4897411.50	M769
366994.95	4897483.63	M770
367007.17	4897418.60	M771
367016.43	4897107.68	M772
367019.00	4897338.58	M773
367019.00	4897427.27	M774
367022.54	4897510.43	M775
367024.51	4897346.86	M777
367030.82	4897356.32	M779
367031.61	4897437.12	M780
367039.49	4897447.37	M781
367043.43	4897368.14	M782
367044.62	4897278.67	M783
367045.01	4897452.49	M784
367045.54	4897198.96	M785
367047.38	4897295.62	M786

AMHERST ISLAND WIND ENERGY PROJECT
DRAFT SITE PLAN REPORT

Amherst Island Wind Energy Power Project Receptor List		
X	Y	ID Number
367050.17	4897033.60	M787
367050.92	4897375.24	M788
367054.14	4897131.50	M789
367056.84	4897464.32	M790
367057.23	4897301.92	M791
367058.41	4897383.51	M792
367065.90	4897310.59	M793
367067.08	4897393.37	M794
367067.08	4897476.54	M795
367069.35	4897143.40	M796
367073.78	4897318.87	M797
367074.18	4897403.22	M798
367077.73	4897488.36	M799
367081.67	4897410.71	M800
367083.24	4897040.21	M801
367083.24	4897328.33	M802
367088.76	4897418.20	M804
367089.19	4897152.00	M805
367090.73	4897337.40	M806
367096.25	4897344.89	M807
367097.04	4897428.05	M808
367106.11	4897435.54	M809
367106.89	4897353.16	M810
367116.31	4897050.14	M811
367116.35	4897445.00	M812
367117.54	4897361.05	M813
367123.05	4897368.14	M814
367127.39	4897452.89	M815
367129.76	4897374.84	M816
367135.27	4897461.56	M817
367137.24	4897382.33	M818
367138.18	4897326.14	M819
367145.52	4897390.22	M820
367146.08	4897055.43	M822
367148.68	4897343.70	M823
367148.76	4897115.80	M824
367154.98	4897350.80	M825
367155.77	4897402.04	M826
367162.87	4897408.35	M828
367163.26	4897358.29	M829

**AMHERST ISLAND WIND ENERGY PROJECT
DRAFT SITE PLAN REPORT**

Amherst Island Wind Energy Power Project Receptor List		
X	Y	ID Number
367172.33	4897367.75	M830
367172.33	4897417.81	M831
367181.79	4897374.84	M832
367182.18	4897428.45	M833
367185.73	4897299.95	M834
367190.85	4897385.09	M835
367191.64	4897305.47	M836
367192.43	4897434.76	M837
367199.13	4897314.54	M838
367199.52	4897125.34	M839
367199.52	4897394.16	M840
367207.41	4897404.41	M842
367210.16	4897322.81	M843
367218.44	4897350.01	M845
367223.57	4897407.56	M846
367229.87	4897340.55	M847
367231.06	4897126.91	M848
367238.94	4897331.48	M849
367240.52	4897407.95	M850
367253.13	4897403.22	M851
367255.49	4897317.30	M852
367257.07	4897126.13	M853
367260.62	4897389.03	M854
367266.53	4897376.81	M855
367267.71	4897301.92	M856
367269.29	4897122.18	M857
367272.84	4897365.78	M858
367279.93	4897294.04	M860
367289.39	4897347.25	M863
367298.06	4897121.40	M865
367299.04	4897167.44	M867
367300.03	4897361.44	M868
367302.40	4897289.31	M869
367306.34	4897379.57	M870
367309.89	4897393.37	M872
367320.92	4897297.98	M873
367327.23	4897313.35	M874
367341.42	4897329.91	M875
367347.33	4897340.55	M876
367349.84	4897300.79	M877

AMHERST ISLAND WIND ENERGY PROJECT
DRAFT SITE PLAN REPORT

Amherst Island Wind Energy Power Project Receptor List		
X	Y	ID Number
367352.06	4897354.74	M878
367355.61	4897366.96	M879
367392.27	4897308.23	M881
367393.06	4897324.39	M882
367397.00	4897341.73	M883
367408.90	4897144.24	M885
367414.74	4897196.29	M886
367415.46	4897185.44	M887
367417.49	4897202.59	M888
367418.68	4897210.08	M889
367422.22	4897219.54	M890
367424.59	4897226.24	M891
367424.77	4897144.24	M892
367426.56	4897232.94	M893
367427.74	4897240.04	M894
367431.29	4897247.53	M895
367434.44	4897255.81	M896
367437.20	4897262.11	M897
367441.14	4897271.97	M898
367441.54	4897279.06	M899
367441.93	4897197.08	M900
367443.30	4897138.95	M901
367443.90	4897286.55	M902
367445.48	4897295.62	M903
367446.66	4897304.68	M904
367448.63	4897312.96	M906
367450.60	4897195.50	M907
367456.91	4897193.53	M909
367463.61	4897191.95	M911
367463.80	4897133.66	M912
367469.13	4897220.73	M914
367485.68	4897185.25	M915
367486.95	4897129.69	M916
367493.57	4897185.64	M917
367501.06	4897185.64	M918
367507.36	4897186.04	M919
367507.46	4897133.00	M920
367511.31	4897214.42	M921
367516.82	4897189.98	M922
367524.71	4897192.74	M925

AMHERST ISLAND WIND ENERGY PROJECT
DRAFT SITE PLAN REPORT

Amherst Island Wind Energy Power Project Receptor List		
X	Y	ID Number
367530.61	4897138.29	M928
367531.41	4897195.10	M929
367533.38	4897296.80	M930
367536.14	4897290.49	M931
367539.29	4897199.05	M932
367539.69	4897283.40	M933
367541.66	4897277.09	M934
367544.42	4897270.78	M935
367546.78	4897263.29	M936
367550.72	4897255.02	M937
367551.77	4897146.89	M938
367553.09	4897249.89	M939
367555.06	4897242.80	M940
367555.85	4897236.10	M941
367559.79	4897229.40	M942
367562.15	4897223.88	M943
367564.91	4897217.57	M944
367572.28	4897153.50	M945
367594.11	4897166.07	M946
367598.74	4897261.98	M948
367601.38	4897205.76	M949
367611.97	4897207.74	M950
367623.87	4897154.83	M952
367629.17	4897213.04	M953
367647.02	4897220.97	M955
367650.33	4897176.66	M956
367668.85	4897228.25	M957
367689.36	4897201.13	M959
367703.25	4897214.36	M960